

BARX1 (Prognostic Biomarker in Hepatocellular Carcinoma) Antibody

Mouse Monoclonal Antibody [Clone BARX1/2759]

Catalog No	Format	Size
56033-MSM1-P0	Purified Ab with BSA and Azide at 200ug/ml	20 ug
56033-MSM1-P1	Purified Ab with BSA and Azide at 200ug/ml	100 ug
56033-MSM1-P1ABX	Purified Ab WITHOUT BSA and Azide at 1.0mg/ml	100 ug

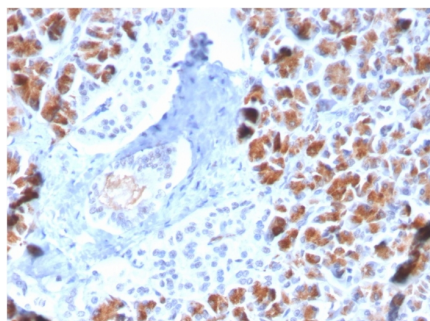
Applications	Tested Dillution	Note
Immunohistochemistry (IHC)	1-2ug/ml	30 min at RT. Staining of formalin-fixed tissues requires heating tissue sections in 10mM Tris with 1mM EDTA, pH 9.0, for 45 min at 95°C followed by cooling at RT for 20 minutes

Product Details

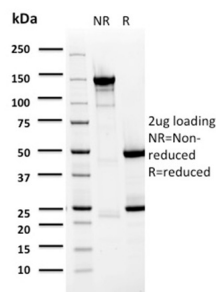
Clone	BARX1/2759
Gene Name	BARX1
Immunogen	Recombinant fragment of human BARX1 protein (around aa 155-254) (exact sequence is proprietary)
Host	Mouse
Clonality	Monoclonal
Isotype / Light Chain	IgG1 / Kappa
Mol. Weight of Antigen	24kDa
Cellular Localization	Nucleus
Species Reactivity	Human
Positive Control	HepG2 cell lysate. Pancreas.

**Optimal dilution for a specific application should be determined.*

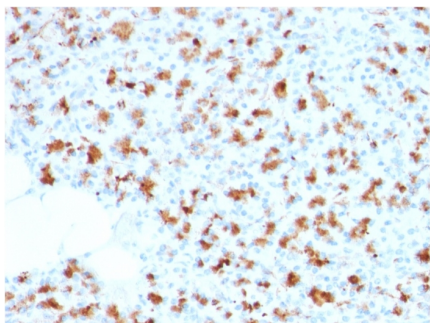
Product Images for BARX1 (Prognostic Biomarker in Hepatocellular Carcinoma) Antibody



Formalin-fixed, paraffin-embedded human Pancreas stained with BARX1 Mouse Monoclonal Antibody (BARX1/2759).



SDS-PAGE Analysis of Purified BARX1 Mouse Monoclonal Antibody (BARX1/2759). Confirmation of Purity and Integrity of Antibody.



Formalin-fixed, paraffin-embedded human Pancreas stained with BARX1 Mouse Monoclonal Antibody (BARX1/2759).

Specificity & Comments

BarX1 is a member of the Bar subclass of homeobox transcription factors. Studies of the Mouse and chick homolog suggest the encoded protein may play a role in developing teeth and craniofacial mesenchyme of neural crest origin. The protein may also be associated with differentiation of stomach epithelia. Down-regulation of Barx1 promotes HCC migration, invasion and metastasis, whereas up-regulation of Barx1 inhibits HCC migration, invasion and metastasis. The loss of Barx1 expression represents a prognostic biomarker in human HCC.

Supplied As

200ug/ml of Ab Purified from Bioreactor Concentrate by Protein A/G. Prepared in 10mM PBS with 0.05% BSA & 0.05% azide. Also available WITHOUT BSA & azide at 1.0mg/ml.

Storage and Stability

Antibody with azide - store at 2 to 8°C. Antibody without azide - store at -20 to -80°C. Antibody is stable for 24 months. Non-hazardous. No MSDS required.

Research Areas

Nuclear Marker

Limitations and Warranty

This antibody is available for research use only and is not approved for use in diagnosis. There are no warranties, expressed or implied, which extend beyond this description. Company is not liable for any personal injury or economic loss resulting from this product.
