

## Protein Kinase C ? / PRKCA Antibody

Mouse Monoclonal Antibody [Clone 133]

Catalog No	Format	Size
5578-MSM2-P0	Purified Ab with BSA and Azide at 200ug/ml	20 ug
5578-MSM2-P1	Purified Ab with BSA and Azide at 200ug/ml	100 ug
5578-MSM2-P1ABX	Purified Ab WITHOUT BSA and Azide at 1.0mg/ml	100 ug

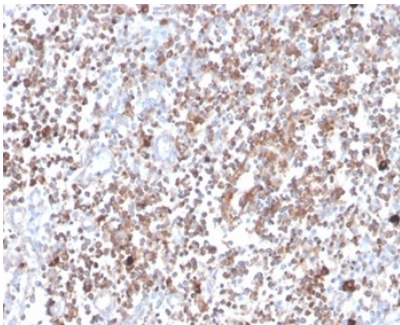
Applications	Tested Dillution	Note
Immunohistochemistry (IHC)	1-2ug/ml	30 min at RT. Staining of formalin-fixed tissues requires heating tissue sections in 10mM Tris with 1mM EDTA, pH 9.0, for 45 min at 95°C followed by cooling at RT for 20 minutes
Western Blot (WB)	2-4ug/ml	

### Product Details

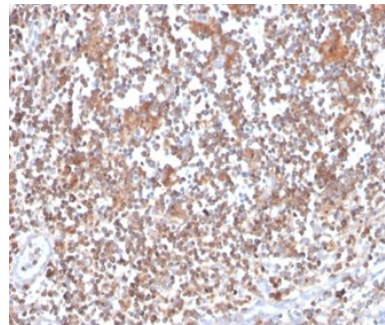
<b>Clone</b>	133
<b>Gene Name</b>	PRKCA
<b>Immunogen</b>	Full-length protein corresponding to PKC alpha. Recognizes sequence PQFVHPILQSAV at the C terminus at PKC?.
<b>Host</b>	Mouse
<b>Clonality</b>	Monoclonal
<b>Isotype / Light Chain</b>	IgG2a / Kappa
<b>Mol. Weight of Antigen</b>	77kDa
<b>Cellular Localization</b>	Cell membrane, Cytoplasm, Mitochondrion membrane, Nucleus
<b>Species Reactivity</b>	Human, Mouse, Rat
<b>Positive Control</b>	Normal human kidney or tonsil tissue. HEK293 whole cell lysates.

*\*Optimal dilution for a specific application should be determined.*

### Product Images for Protein Kinase C ? / PRKCA Antibody



Formalin-fixed, paraffin-embedded human tonsil stained with Protein Kinase C? Mouse Monoclonal Antibody (133).



Formalin-fixed, paraffin-embedded human tonsil stained with Protein Kinase C? Mouse Monoclonal Antibody (133).

**Specificity & Comments**

Protein Kinase C alpha (PKC?) is involved in the regulation of cell proliferation during cell cycle progression. This is a calcium-activated, phospholipid-dependent, serine- and threonine-specific enzyme. May play a role in cell motility by phosphorylating CSPG4. PKC is activated by diacylglycerol which in turn phosphorylates a range of cellular proteins. PKC also serves as the receptor for phorbol esters, a class of tumor promoters. Clone 133 recognizes the ? isoform of PKC? and binds to a sequence at the C terminus of PKC? to detect its expression in vitro.

---

**Limitations and Warranty**

This antibody is available for research use only and is not approved for use in diagnosis. There are no warranties, expressed or implied, which extend beyond this description. Company is not liable for any personal injury or economic loss resulting from this product.

---

**Supplied As**

200ug/ml of Ab purified from Bioreactor Concentrate by Protein A/G. Prepared in 10mM PBS with 0.05% BSA & 0.05% azide. Also available WITHOUT BSA & azide at 1.0mg/ml.

---

**Storage and Stability**

Antibody with azide - store at 2 to 8 °C. Antibody without azide - store at -20 to -80 °C. Antibody is stable for 24 months. Non-hazardous. No MSDS required.

---

**Research Areas**

BBB VCAM-1 Signaling, Cardiovascular, Complement System, Developmental Biology, MAPK Signaling, Neuroinflammation, Signal Transduction

---