

Calcineurin B / PPP3R1 Antibody

Mouse Monoclonal Antibody [Clone CALNB/2342]

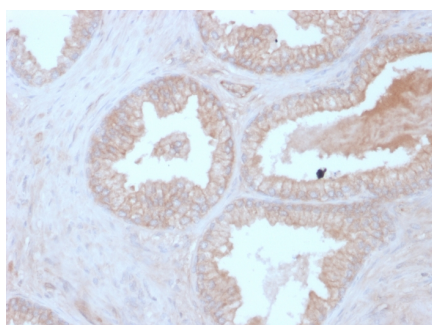
Catalog No	Format	Size
5534-MSM2-P0	Purified Ab with BSA and Azide	200ug/ml
5534-MSM2-P1	Purified Ab with BSA and Azide	200ug/ml
5534-MSM2-P1ABX	Purified Ab WITHOUT BSA and Azide	1.0mg/ml

Applications	Tested Dillution
Immunohistochemistry (IHC)	1-2ug/ml

Product Details	
Clone	CALNB/2342
Gene Name	PPP3R1
Immunogen	Recombinant full-length Calcineurin B protein
Host	Mouse
Clonality	Monoclonal
Isotype / Light Chain	IgG1 / Kappa
Mol. Weight of Antigen	19kDa
Cellular Localization	Cell membrane, Cytoplasm, Cytosol, Sarcolemma
Species Reactivity	Human
Positive Control	HeLa, MCF-7 or A431 cells. Prostate, Thyroid or Pancreas.

**Optimal dilution for a specific application should be determined.*

Product Images for Calcineurin B / PPP3R1 Antibody



Formalin-fixed, paraffin-embedded human Prostate Carcinoma stained with Calcineurin B Mouse Monoclonal Antibody (CALNB/2342).

Specificity & Comments

Calcineurin is an enzyme that dephosphorylates serine and threonine residues in proteins. It is a heterodimer of a 59kDa catalytic A subunit and a 19kDa regulatory B subunit that is activated by the binding of calcium ions and calmodulin. Calcineurin is expressed in many tissues, but its levels are highest in the brain, where it may play a role in learning and memory. It has many substrates, including NFAT, a transcription factor that is activated by dephosphorylation. Complexes of the immuno-suppressants cyclosporine and FK506 with immunophilin proteins such as cyclophilin and FKBP12 are potent and specific inhibitors of Calcineurin activity. Alterations in Calcineurin activity are suspected to play a role in cardiac hypertrophy and graft versus host disease in organ transplantation.

Research Areas

Cardiovascular, Immunology, MAPK Signaling, Signal Transduction

Known Applications & Suggested Dilutions

Immunohistochemistry (Formalin-fixed) (1-2ug/ml for 30 min at RT)(Staining of formalin-fixed tissues requires heating tissue sections in 10mM Tris with 1mM EDTA, pH 9.0, for 45 min at 95°C followed by cooling at RT for 20 minutes) | Optimal dilution for a specific application should be determined.

Limitations and Warranty

This antibody is available for research use only and is not approved for use in diagnosis.

There are no warranties, expressed or implied, which extend beyond this description. Company is not liable for any personal injury or economic loss resulting from this product.

Supplied As

200ug/ml of Ab Purified from Bioreactor Concentrate by Protein A/G. Prepared in 10mM PBS with 0.05% BSA & 0.05% azide. Also available WITHOUT BSA & azide at 1.0mg/ml.

Storage and Stability

Antibody with azide - store at 2 to 8°C. Antibody without azide - store at -20 to -80°C. Antibody is stable for 24 months. Non-hazardous. No MSDS required.