

ATRX / RAD54 (Alpha Thalassemia Mental Retardation) Antibody

Mouse Monoclonal Antibody [Clone 23c]

Catalog No	Format	Size
546-MSM2-P0	Purified Ab with BSA and Azide	200ug/ml
546-MSM2-P1	Purified Ab with BSA and Azide	200ug/ml
546-MSM2-P1ABX	Purified Ab WITHOUT BSA and Azide	1.0mg/ml

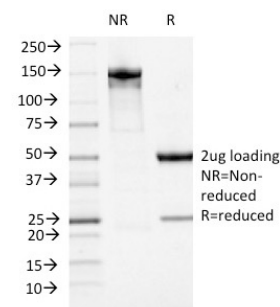
Applications	Tested Dillution
--------------	------------------

Product Details

Clone	23c
Gene Name	ATRX
Immunogen	Recombinant human ATRX protein
Host	Mouse
Clonality	Monoclonal
Isotype / Light Chain	IgG1 / Kappa
Mol. Weight of Antigen	280kDa
Cellular Localization	Chromosome, Nucleus, PML body, Telomere
Species Reactivity	Human
Positive Control	adrenal, HeLa or A431 cells. Pancreas, Kidney, ovary, prostate or stomach., Raji

**Optimal dilution for a specific application should be determined.*

Product Images for ATRX / RAD54 (Alpha Thalassemia Mental Retardation) Antibody



SDS-PAGE Analysis of Purified ATRX Mouse Monoclonal Antibody (23c). Confirmation of Integrity and Purity of Antibody.

Specificity & Comments

ATRX is a member of the Snf2 family of helicase/ATPases, which contribute to the remodeling of the nucleosome structure in an ATP-dependent manner, and facilitate the initiation of transcription and replication. Structurally, ATRX contains a PHD zinc finger motif. ATRX is regulated throughout the cell cycle where it is differentially distributed within the nucleus. During interphase, ATRX predominately associates with the nuclear matrix, while during mitosis, ATRX localizes with condensed chromatin. At the onset of M phase, phosphorylation rapidly induces this redistribution of ATRX to the short arms of human acrocentric chromosomes, where it then specifically complexes with heterochromatin protein 1 thalassemia or ATRX syndrome

Research Areas

Cancer, Cardiovascular, Infectious Disease, Nuclear Marker

Known Applications & Suggested Dilutions

ELISA (Use Ab at 2-4ug/ml for coating) (Order Ab without BSA) |
Optimal dilution for a specific application should be determined

Supplied As

200ug/ml of Ab Purified from Bioreactor Concentrate by Protein A/G. Prepared in 10mM PBS with 0.05% BSA & 0.05% azide. Also available WITHOUT BSA & azide at 1.0mg/ml.

Storage and Stability

Antibody with azide - store at 2 to 8°C. Antibody without azide - store at -20 to -80°C. Antibody is stable for 24 months. Non-hazardous. No MSDS required.

Limitations and Warranty

This antibody is available for research use only and is not approved for use in diagnosis.

There are no warranties, expressed or implied, which extend beyond this description. Company is not liable for any personal injury or economic loss resulting from this product.
