

## POU1F1 / PIT-1 Antibody

Mouse Monoclonal Antibody [Clone PIT1/7262]

Catalog No	Format	Size
5449-MSM2-P0	Purified Ab with BSA and Azide at 200ug/ml	20 ug
5449-MSM2-P1	Purified Ab with BSA and Azide at 200ug/ml	100 ug
5449-MSM2-P1ABX	Purified Ab WITHOUT BSA and Azide at 1.0mg/ml	100 ug

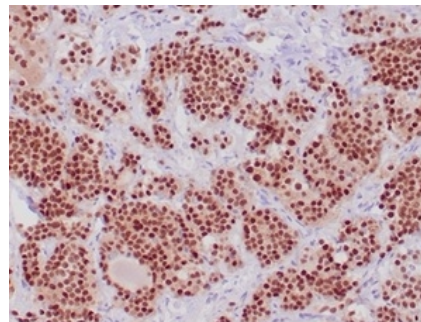
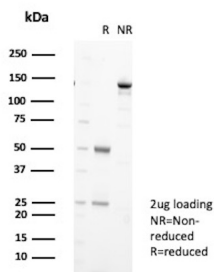
Applications	Tested Dillution	Note
Immunohistochemistry (IHC)	1-2ug/ml	30 min at RT. Staining of formalin-fixed tissues requires heating tissue sections in 10mM Tris with 1mM EDTA, pH 9.0, for 45 min at 95°C followed by cooling at RT for 20 minutes

### Product Details

Clone	PIT1/7262
Gene Name	POU1F1
Immunogen	Recombinant human full-length POU1F1 protein
Host	Mouse
Clonality	Monoclonal
Isotype / Light Chain	IgG2b / Kappa
Mol. Weight of Antigen	31-35kDa
Cellular Localization	Nucleus
Species Reactivity	Human
Positive Control	Human pituitary or tonsil.

\*Optimal dilution for a specific application should be determined.

### Product Images for POU1F1 / PIT-1 Antibody



SDS-PAGE Analysis of Purified Pituitary-specific positive transcription factor 1 Mouse Monoclonal Antibody (PIT1/7262). Confirmation of Purity and Integrity of Antibody.

Formalin-fixed, paraffin-embedded human pituitary stained with POU1F1 / PIT-1 Mouse Monoclonal Antibody (PIT1/7262). HIER: Tris/EDTA, pH9.0, 45min. 2 °: HRP-polymer, 30min. DAB, 5min.

### **Specificity & Comments**

Transcriptional regulators play a critical role in development by mediating tissue- and cell-specific transcription. POU domain factors are transcriptional regulators characterized by a bipartite DNA binding domain, which consists of two highly conserved regions, tethered by a variable linker of 14-26 amino acids. Pit-1, also known as growth hormone factor-1 (GHF-1), a member of the POU homeodomain family, is essential for the normal development of the anterior pituitary gland, where it is required for the formation of somatotropes, lactotropes and thyrotropes. In somatotropes and lactotropes, Pit-1 activates the production of growth hormone and Prolactin, respectively. In addition, Pit-1 acts as a repressor of gene expression, which allows for the differentiation of specific cell types. Pit-1 is expressed as two alternatively spliced products, designated Pit-1a and Pit-1b, which differ in their trans-activation ability. Mutations in the Pit-1 gene are believed to result in combined pituitary hormone deficiency (CPHD) for growth hormone, Prolactin and thyroid stimulating hormone. The gene which encodes Pit-1 maps to human chromosome 3p11.2.

---

### **Limitations and Warranty**

This antibody is available for research use only and is not approved for use in diagnosis. There are no warranties, expressed or implied, which extend beyond this description. Company is not liable for any personal injury or economic loss resulting from this product.

---

### **Supplied As**

200ug/ml of Ab purified from Bioreactor Concentrate by Protein A/G. Prepared in 10mM PBS with 0.05% BSA & 0.05% azide. Also available WITHOUT BSA & azide at 1.0mg/ml.

---

### **Storage and Stability**

Antibody with azide - store at 2 to 8 °C. Antibody without azide - store at -20 to -80 °C. Antibody is stable for 24 months. Non-hazardous. No MSDS required.

---

### **Research Areas**

Nuclear Marker

---