

## Cytokeratin 20 (KRT20) (Colorectal Epithelial Marker) Antibody

Mouse Monoclonal Antibody [Clone KRT20/1991]

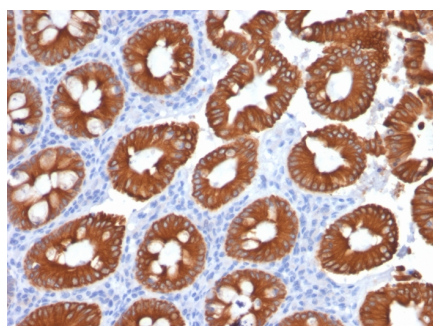
Catalog No	Format	Size
54474-MSM1-P0	Purified Ab with BSA and Azide	200ug/ml
54474-MSM1-P1	Purified Ab with BSA and Azide	200ug/ml
54474-MSM1-P1ABX	Purified Ab WITHOUT BSA and Azide	1.0mg/ml

Applications	Tested Dillution
Immunohistochemistry (IHC)	1-2ug/ml
Western Blot (WB)	2-4ug/ml

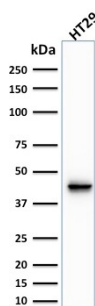
Product Details	
Clone	KRT20/1991
Gene Name	KRT20
Immunogen	Recombinant fragment of human KRT20 protein (around aa 196-323) (exact sequence is proprietary)
Host	Mouse
Clonality	Monoclonal
Isotype / Light Chain	IgG1 / Kappa
Mol. Weight of Antigen	46kDa
Cellular Localization	Cytoplasm
Species Reactivity	Human
Positive Control	HT29 cells. Colon Carcinoma.

*\*Optimal dilution for a specific application should be determined.*

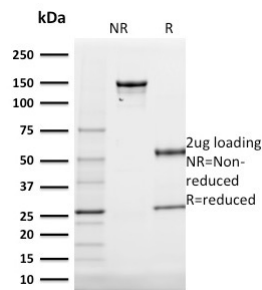
### Product Images for Cytokeratin 20 (KRT20) (Colorectal Epithelial Marker) Antibody



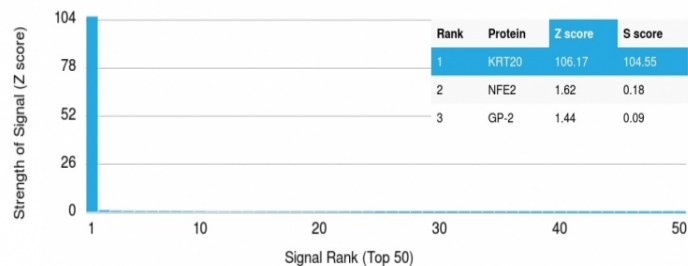
Formalin-fixed, paraffin-embedded human Normal Colon stained with Cytokeratin 20 (KRT20) Mouse Monoclonal Antibody (KRT20/1991).



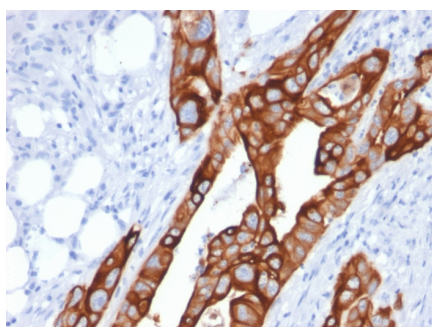
Western Blot Analysis of human HT29 cell lysate using Cytokeratin 20 (KRT20) Mouse Monoclonal Antibody (KRT20/1991).



SDS-PAGE Analysis Purified Cytokeratin 20 (KRT20) Mouse Monoclonal Antibody (KRT20/1991). Confirmation of Purity and Integrity of Antibody.



Analysis of Protein Array containing more than 19,000 full-length human proteins using Cytokeratin 20 (KRT20) Mouse Monoclonal Antibody (KRT20/1991). Z- and S- Score: The Z-score represents the strength of a signal that a monoclonal antibody (MAb) (in combination with a fluorescently-tagged anti-IgG secondary antibody) produces when binding to a particular protein on the HuProt™ array. Z-scores are described in units of standard deviations (SD's) above the mean value of all signals generated on that array. If targets on HuProt™ are arranged in descending order of the Z-score, the S-score is the difference (also in units of SD's) between the Z-score. S-score therefore represents the relative target specificity of a MAb to its intended target. A MAb is considered to be specific to its intended target, if the MAb has an S-score of at least 2.5. For example, if a MAb binds to protein X with a Z-score of 43 and to protein Y with a Z-score of 14, then the S-score for the binding of that MAb to protein X is equal to 29.



Formalin-fixed, paraffin-embedded human Colon Carcinoma stained with Cytokeratin 20 (KRT20) Mouse Monoclonal Antibody (KRT20/1991).

### Specificity & Comments

This MAb recognizes an intermediate filament protein of 46kDa, identified as cytokeratin 20 (KRT20). KRT is abundantly expressed in goblet cells and enterocytes of the gastrointestinal tract. It is a useful marker of pancreatic and colorectal cancer. KRT20 is expressed under normal, hyperplastic and neoplastic conditions. It has been detected in adenocarcinomas of the colon, stomach and biliary tract. Breast carcinomas are generally non-reactive.

### Research Areas

Autophagy, Developmental Biology, Gastrointestinal Tract

### Known Applications & Suggested Dilutions

Western Blot (1-2ug/ml) | Immunohistochemistry (Formalin-fixed) (1-2ug/ml for 30 min at RT) (Staining of formalin-fixed tissues requires heating tissue sections in 10mM Tris with 1mM EDTA, pH 9.0, for 45 min at 95°C followed by cooling at RT for 20 minutes) | Optimal dilution for a specific application should be determined.

### Limitations and Warranty

This antibody is available for research use only and is not approved for use in diagnosis.

There are no warranties, expressed or implied, which extend beyond this description. Company is not liable for any personal injury or economic loss resulting from this product.

### Supplied As

200ug/ml of Ab Purified from Bioreactor Concentrate by Protein A/G. Prepared in 10mM PBS with 0.05% BSA & 0.05% azide. Also available WITHOUT BSA & azide at 1.0mg/ml.

### Storage and Stability

Antibody with azide - store at 2 to 8°C. Antibody without azide - store at -20 to -80°C. Antibody is stable for 24 months. Non-hazardous. No MSDS required.