

## Podocalyxin (PODXL) (Hematopoietic Stem Cell Marker) Antibody

Mouse Monoclonal Antibody [Clone 4F10]

Catalog No	Format	Size
5420-MSM2-P0	Purified Ab with BSA and Azide at 200ug/ml	20 ug
5420-MSM2-P1	Purified Ab with BSA and Azide at 200ug/ml	100 ug
5420-MSM2-P1BX	Purified Ab WITHOUT BSA at 1.0mg/ml	100 ug

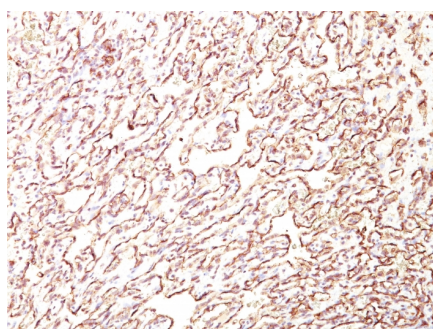
Applications	Tested Dillution	Note
Flow Cytometry (Flow)	1-2ug/million cells	
Immunofluorescence (IF)	1-3ug/ml	
Immunohistochemistry (IHC)	1-2ug/ml	30 min at RT. Staining of formalin-fixed tissues requires heating tissue sections in 10mM Tris with 1mM EDTA, pH 9.0, for 45 min at 95°C followed by cooling at RT for 20 minutes

### Product Details

Clone	4F10
Gene Name	PODXL
Immunogen	A recombinant protein fragment containing the intracellular, transmembrane, and part of the extracellular domain of human podocalyxin
Host	Mouse
Clonality	Monoclonal
Isotype / Light Chain	IgM / Kappa
Mol. Weight of Antigen	165-170kDa
Cellular Localization	Apical cell membrane, Cell projection, Filopodium, Lamellipodium, Membrane, Membrane raft, Microvillus, Ruffle
Species Reactivity	Human, Rabbit, Rat
Positive Control	Angiosarcoma, Breast, HeLa, Jurkat cells, Kidney., Liver, Pancreatic, prostate, Raji

*\*Optimal dilution for a specific application should be determined.*

### Product Images for Podocalyxin (PODXL) (Hematopoietic Stem Cell Marker) Antibody



Formalin-fixed, paraffin-embedded human Angiosarcoma stained with Podocalyxin Monoclonal Antibody (4F10).

### Specificity & Comments

Podocalyxin is a member of the CD34 transmembrane sialomucin family. It is over-expressed on the podocyte foot projections and plays essential roles in kidney development and homeostasis, blood filtration and urine formation. It is also expressed on vascular endothelia, hematopoietic progenitors and a subset of neurons. Overexpression of podocalyxin may be linked to more aggressive tumor behavior. Podocalyxin antibody can identify podocytes in the urine (podocyturia) that may indicate glomerular disease, pre-eclampsia, and other kidney pathology.

### Supplied As

200ug/ml of Ab Purified from Bioreactor Concentrate. Prepared in 10mM PBS with 0.05% BSA & 0.05% azide. Also available WITHOUT BSA & azide at 1.0mg/ml.

### Storage and Stability

Antibody with azide - store at 2 to 8°C. Antibody without azide - store at -20 to -80°C. Antibody is stable for 24 months. Non-hazardous. No MSDS required.

### Research Areas

Endothelial Cell Marker, Stem Cell Differentiation

### **Limitations and Warranty**

This antibody is available for research use only and is not approved for use in diagnosis. There are no warranties, expressed or implied, which extend beyond this description. Company is not liable for any personal injury or economic loss resulting from this product.

---