

Proteolipid Protein / Myelin PLP Antibody

Mouse Monoclonal Antibody [Clone PLP1/4259]

Catalog No	Format	Size
5354-MSM1-P0	Purified Ab with BSA and Azide at 200ug/ml	20 ug
5354-MSM1-P1	Purified Ab with BSA and Azide at 200ug/ml	100 ug
5354-MSM1-P1ABX	Purified Ab WITHOUT BSA and Azide at 1.0mg/ml	100 ug

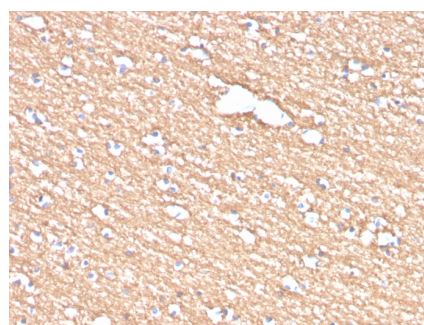
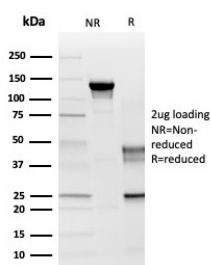
Applications	Tested Dillution	Note
Immunohistochemistry (IHC)	1-2ug/ml	30 min at RT. Staining of formalin-fixed tissues requires heating tissue sections in 10mM Tris with 1mM EDTA, pH 9.0, for 45 min at 95°C followed by cooling at RT for 20 minutes

Product Details

Clone	PLP1/4259
Gene Name	PLP1
Immunogen	Synthetic peptide GRGTKF that recognizes the C terminal region (aa272-277) of myelin proteolipid protein.
Host	Mouse
Clonality	Monoclonal
Isotype / Light Chain	IgG2a
Mol. Weight of Antigen	23-25kDa
Cellular Localization	Cell membrane, Myelin membrane
Species Reactivity	Cow, Human, Mouse, Rat, Tenerife Lizard
Positive Control	Human brain tissue.

**Optimal dilution for a specific application should be determined.*

Product Images for Proteolipid Protein / Myelin PLP Antibody



SDS-PAGE Analysis of Purified Myelin PLP Mouse Monoclonal Antibody (PLP1/4259). Confirmation of Integrity and Purity of Antibody.

Formalin-fixed, paraffin-embedded human brain stained with Myelin PLP Mouse Monoclonal Antibody (PLP1/4259).

Specificity & Comments

Proteolipid protein (PLP) is the major myelin protein of the CNS and plays an important role in the formation and maintenance of myelin. PLP may play a role in the compaction and stabilization of myelin sheaths, as well as in oligodendrocyte development and axonal survival. Mutations in PLP gene can lead to dysmyelinating diseases. Clone PLP1/4259 is used in the detection of PLP by various analysis methods.

Supplied As

200ug/ml of Ab purified from Bioreactor Concentrate by Protein A/G. Prepared in 10mM PBS with 0.05% BSA & 0.05% azide. Also available WITHOUT BSA & azide at 1.0mg/ml.

Storage and Stability

Antibody with azide - store at 2 to 8 °C. Antibody without azide - store at -20 to -80 °C. Antibody is stable for 24 months. Non-hazardous. No MSDS required.

Research Areas

Cardiovascular

Limitations and Warranty

This antibody is available for research use only and is not approved for use in diagnosis. There are no warranties, expressed or implied, which extend beyond this description. Company is not liable for any personal injury or economic loss resulting from this product.
