

Progesterone Receptor (Marker of Progestin Dependence) Antibody

Mouse Monoclonal Antibody [Clone PGR/3817]

Catalog No	Format	Size
5241-MSM7-P0	Purified Ab with BSA and Azide at 200ug/ml	20 ug
5241-MSM7-P1	Purified Ab with BSA and Azide at 200ug/ml	100 ug
5241-MSM7-P1ABX	Purified Ab WITHOUT BSA and Azide at 1.0mg/ml	100 ug

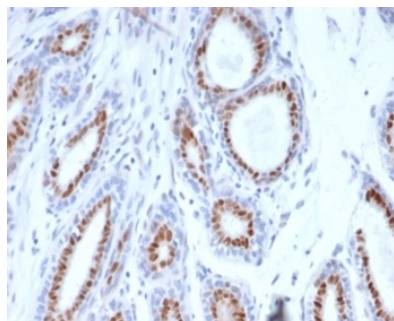
Applications	Tested Dillution	Note
Immunohistochemistry (IHC)	1-2ug/ml	30 min at RT. Staining of formalin-fixed tissues requires heating tissue sections in 10mM Tris with 1mM EDTA, pH 9.0, for 45 min at 95°C followed by cooling at RT for 20 minutes

Product Details

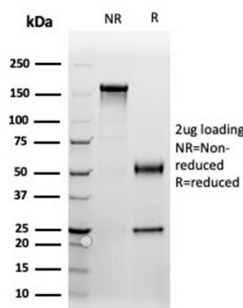
Clone	PGR/3817
Gene Name	PGR
Immunogen	Recombinant fragment (around aa 483-571) of human PGR (exact sequence is proprietary)
Host	Mouse
Clonality	Monoclonal
Isotype / Light Chain	IgG2b / Kappa
Mol. Weight of Antigen	PR-A (81kDa) and PR-B (116kDa).
Cellular Localization	Cytoplasm, Mitochondrion outer membrane, Nucleus
Species Reactivity	Human
Positive Control	Human breast cancers.

**Optimal dilution for a specific application should be determined.*

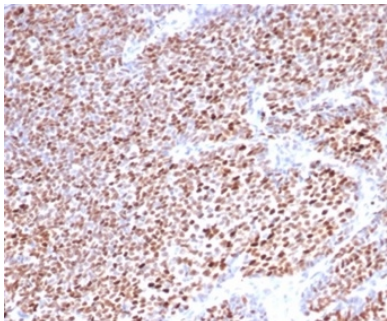
Product Images for Progesterone Receptor (Marker of Progestin Dependence) Antibody



Formalin-fixed, paraffin-embedded human breast carcinoma stained with Progesterone Receptor Mouse Monoclonal Antibody (PGR/3817).



SDS-PAGE Analysis Purified Progesterone Receptor Mouse Monoclonal Antibody (PGR/3817). Confirmation of Integrity and Purity of Antibody.



Formalin-fixed, paraffin-embedded human breast carcinoma stained with Progesterone Receptor Mouse Monoclonal Antibody (PGR/3817).

Specificity & Comments

This MAb is specific to progesterone receptor and shows minimal cross-reaction with other members of the family. Progesterone receptor is expressed as two major isoforms, PR-A (81kDa) and PR-B (116kDa). Expression of PgR has been suggested to reflect an intact estrogen regulatory machinery and therefore, predict better clinical response to endocrine therapy than ER alone. It is excellent for immunohistochemical staining of formalin/paraffin tissues.

Supplied As

200ug/ml of Ab purified from Bioreactor Concentrate by Protein A/G. Prepared in 10mM PBS with 0.05% BSA & 0.05% azide. Also available WITHOUT BSA & azide at 1.0mg/ml.

Storage and Stability

Antibody with azide - store at 2 to 8 °C. Antibody without azide - store at -20 to -80 °C. Antibody is stable for 24 months. Non-hazardous. No MSDS required.

Research Areas

Breast Cancer, Cardiovascular, Signal Transduction, Transcription Factors

Limitations and Warranty

This antibody is available for research use only and is not approved for use in diagnosis. There are no warranties, expressed or implied, which extend beyond this description. Company is not liable for any personal injury or economic loss resulting from this product.
