

Aciculin / Phosphoglucomutase 5 (PGM5) Antibody

Mouse Monoclonal Antibody [Clone 14F8/F8]

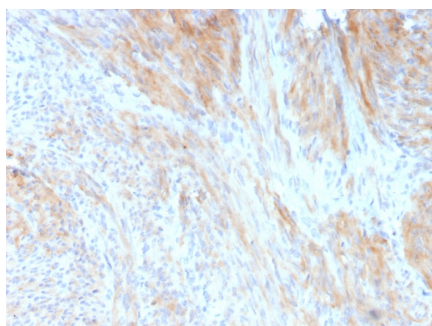
Catalog No	Format	Size
5239-MSM1-P0	Purified Ab with BSA and Azide	200ug/ml
5239-MSM1-P1	Purified Ab with BSA and Azide	200ug/ml
5239-MSM1-P1ABX	Purified Ab WITHOUT BSA and Azide	1.0mg/ml

Applications	Tested Dillution
Immunofluorescence (IF)	1-3ug/ml
Immunohistochemistry (IHC)	1-2ug/ml
Western Blot (WB)	2-4ug/ml

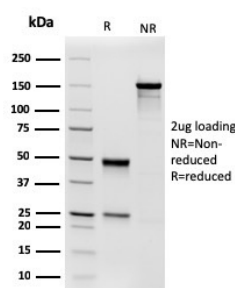
Product Details	
Clone	14F8/F8
Gene Name	PGM5
Immunogen	Cytoskeletal fraction of the human myometrium tissue extract
Host	Mouse
Clonality	Monoclonal
Isotype / Light Chain	IgG2a / Kappa
Mol. Weight of Antigen	56kDa
Cellular Localization	Adherens junction, Cell junction, Cell membrane, Cytoplasm, Cytoskeleton, Sarcolemma
Species Reactivity	Cow, Human, Mouse, Rabbit, Rat
Positive Control	Human heart muscle or smooth muscle (IHC). Mouse heart tissue lysate (WB).

**Optimal dilution for a specific application should be determined.*

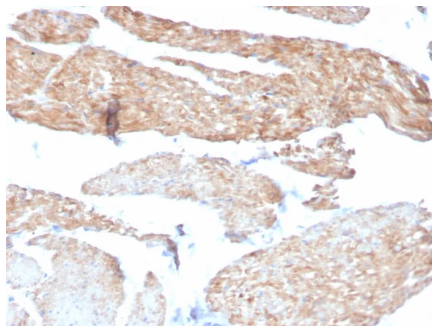
Product Images for Aciculin / Phosphoglucomutase 5 (PGM5) Antibody



Formalin-fixed, paraffin-embedded human uterus stained with Aciculin Mouse Monoclonal Antibody (14F8/F8).



SDS-PAGE Analysis of Purified Aciculin Mouse Monoclonal Antibody(14F8/F8). Confirmation of Purity and Integrity of Antibody.



Formalin-fixed, paraffin-embedded human bladder stained with Aciculin Mouse Monoclonal Antibody (14F8/F8).

Specificity & Comments

Aciculin, also known as PGM5 (phosphoglucomutase 5) or PGMRP, is a 567 amino acid protein that belongs to the phosphoglucomutase family of phosphotransferases, which play an important role in the interconversion of glucose-1-phosphate and glucose-6-phosphate. Localized to the cell junction and expressed at high levels in smooth and cardiac muscle, Aciculin binds magnesium as a cofactor and interacts with dystrophin and utrophin, possibly playing a role in cytoskeletal organization and function. Aciculin exists as two alternatively spliced isoforms and is encoded by a gene that maps to human chromosome 9, which houses over 900 genes and comprises nearly 4% of the human genome.

Known Applications & Suggested Dilutions

ELISA (For coating, order antibody without BSA) | Immunofluorescence (1-2ug/ml) | Western Blot (1-2ug/ml), Immunohistochemistry (Formalin-fixed) (1-2ug/ml for 30 minutes at RT), (Staining of formalin-fixed tissues requires heating tissue sections in 10mM Tris with 1mM EDTA, pH 9.0, for 45 min at 95°C followed by cooling at RT for 20 minutes) | Optimal dilution for a specific application should be determined.

Limitations and Warranty

This antibody is available for research use only and is not approved for use in diagnosis.

There are no warranties, expressed or implied, which extend beyond this description. Company is not liable for any personal injury or economic loss resulting from this product.

Supplied As

200ug/ml of Ab purified from Bioreactor Concentrate by Protein A/G. Prepared in 10mM PBS with 0.05% BSA & 0.05% azide. Also available WITHOUT BSA & azide at 1.0mg/ml.

Storage and Stability

Antibody with azide - store at 2 to 8°C. Antibody without azide - store at -20 to -80°C. Antibody is stable for 24 months. Non-hazardous. No MSDS required.