

## Recombinant LEF1 / TCF1 alpha (Transcription Factor) Antibody

Mouse Monoclonal Antibody [Clone rLEF1/6906]

Catalog No	Format	Size
51176-MSM6-P0	Purified Ab with BSA and Azide at 200ug/ml	20 ug
51176-MSM6-P1	Purified Ab with BSA and Azide at 200ug/ml	100 ug
51176-MSM6-P1ABX	Purified Ab WITHOUT BSA or Azide at 1.0mg/ml	100 ug

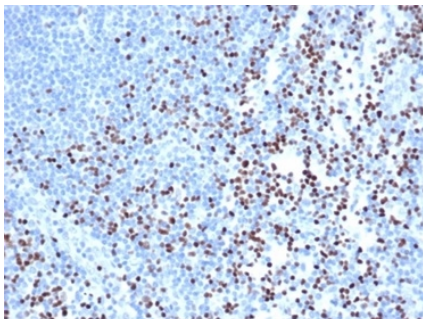
Applications	Tested Dillution	Note
Immunohistochemistry (IHC)	1-2ug/ml	30 min at RT. Staining of formalin-fixed tissues requires heating tissue sections in 10mM Tris with 1mM EDTA, pH 9.0, for 45 min at 95°C followed by cooling at RT for 20 minutes
Western Blot (WB)	2-4ug/ml	

### Product Details

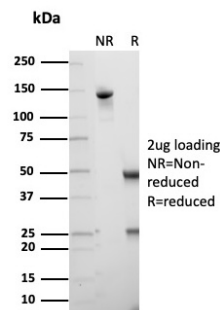
<b>Clone</b>	rLEF1/6906
<b>Immunogen</b>	Recombinant fragment (around aa100-200) of the human LEF1 protein (exact sequence is proprietary)
<b>Host</b>	Mouse
<b>Clonality</b>	Monoclonal
<b>Isotype / Light Chain</b>	IgG1 / Kappa
<b>Mol. Weight of Antigen</b>	44.2kDa
<b>Cellular Localization</b>	Nucleus
<b>Species Reactivity</b>	Human
<b>Positive Control</b>	Human tonsil and thymus.

\*Optimal dilution for a specific application should be determined.

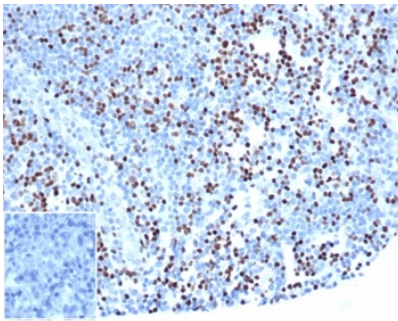
### Product Images for Recombinant LEF1 / TCF1 alpha (Transcription Factor) Antibody



IHC analysis of formalin-fixed, paraffin-embedded human lymph node. Strong nuclear staining of non-germinal center cells using rLEF1/6906 at 2ug/ml in PBS for 30min RT. HIER: Tris/EDTA, pH9.0, 45min. 2°C: HRP-polymer, 30min. DAB, 5min.



SDS-PAGE Analysis of Purified Lymphoid enhancer-binding factor 1 Recombinant Mouse Monoclonal Antibody (rLEF1/6906). Confirmation of Purity and Integrity of Antibody.



IHC analysis of formalin-fixed, paraffin-embedded human lymph node. Strong nuclear staining of non-germinal center cells using rLEF1/6906 at 2ug/ml in PBS for 30min RT. Inset: PBS instead of primary. Secondary antibody negative control.

---

### Specificity & Comments

Lymphoid Enhancing Factor 1 (LEF1) is a transcription factor that belongs to the TCF/LEF family. LEF1 participates as a regulator in Wnt signaling pathways. LEF1 is an important factor in lymphopoiesis and is expressed normally in T and pro-B cells but not expressed in mature B cells. Anti-LEF1 may be used as an aid for differentiation of chronic lymphocytic leukemia/small lymphocytic lymphoma from other small B cell lymphomas.

---

### Supplied As

200ug/ml of Ab produced in a mammalian-based expression system. Prepared in 10mM PBS with 0.05% BSA & 0.05% azide. Also available WITHOUT BSA & azide at 1.0mg/ml.

---

### Storage and Stability

Antibody with azide - store at 2 to 8 °C. Antibody without azide - store at -20 to -80 °C. Antibody is stable for 24 months. Non-hazardous. No MSDS required.

---

### Limitations and Warranty

This antibody is available for research use only and is not approved for use in diagnosis. There are no warranties, expressed or implied, which extend beyond this description. Company is not liable for any personal injury or economic loss resulting from this product.

---