

## PCNA (Proliferating Cell Nuclear Antigen) (G1- & S-phase Marker) Antibody

Mouse Monoclonal Antibody [Clone SPM350]

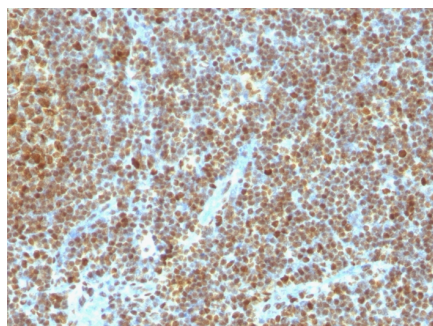
| Catalog No       | Format                            | Size     |
|------------------|-----------------------------------|----------|
| 5111-MSM1X-P0    | Purified Ab with BSA and Azide    | 200ug/ml |
| 5111-MSM1X-P1    | Purified Ab with BSA and Azide    | 200ug/ml |
| 5111-MSM1X-P1ABX | Purified Ab WITHOUT BSA and Azide | 1.0mg/ml |

| Applications               | Tested Dillution    |
|----------------------------|---------------------|
| Flow Cytometry (Flow)      | 1-2ug/million cells |
| Immunofluorescence (IF)    | 1-3ug/ml            |
| Immunohistochemistry (IHC) | 1-2ug/ml            |
| Western Blot (WB)          | 2-4ug/ml            |

| Product Details        |                                                                                                                        |
|------------------------|------------------------------------------------------------------------------------------------------------------------|
| Clone                  | SPM350                                                                                                                 |
| Gene Name              | PCNA                                                                                                                   |
| Immunogen              | Rat PCNA/protein A fusion protein                                                                                      |
| Host                   | Mouse                                                                                                                  |
| Clonality              | Monoclonal                                                                                                             |
| Isotype / Light Chain  | IgG2a / Kappa                                                                                                          |
| Mol. Weight of Antigen | 36kDa                                                                                                                  |
| Cellular Localization  | Nucleus                                                                                                                |
| Species Reactivity     | Chicken, Drosophila melanogaster, Human, Monkey, Mouse, Pig, Pombe, Rat, Yeast (S. pombe and S. cerevisiae), Zebrafish |
| Positive Control       | Tonsil or reactive lymph node.                                                                                         |

*\*Optimal dilution for a specific application should be determined.*

### Product Images for PCNA (Proliferating Cell Nuclear Antigen) (G1- & S-phase Marker) Antibody



Formalin-fixed, paraffin-embedded human Tonsil stained with PCNA Mouse Monoclonal Antibody (SPM350).

### Specificity & Comments

Recognizes a non-histone protein of 36kDa, which is identified as proliferating cell nuclear antigen (PCNA). It is also known as cyclin or polymerase delta auxiliary protein. Elevated expression of PCNA/cyclin has been shown in the nucleus during late G1 phase immediately before the onset of DNA synthesis, becoming maximal during S-phase and declining during G2 and M phases. This MAb is excellent for multiple applications.

---

### Research Areas

Nuclear Marker, Transcription Factors

---

### Known Applications & Suggested Dilutions

Flow Cytometry (1-2ug/million cells) | Immunofluorescence (1-2ug/ml) | Western Blot (1-2ug/ml) | Immunohistochemistry (Formalin-fixed) (1-2ug/ml for 30 minutes at RT)(Staining of formalin-fixed tissues requires heating tissue sections in 10mM Tris with 1mM EDTA, pH 9.0, for 45 min at 95°C followed by cooling at RT for 20 minutes) | Optimal dilution for a specific application should be determined.

---

### Limitations and Warranty

This antibody is available for research use only and is not approved for use in diagnosis.

There are no warranties, expressed or implied, which extend beyond this description. Company is not liable for any personal injury or economic loss resulting from this product.

---

### Supplied As

200ug/ml of Ab Purified from Bioreactor Concentrate by Protein A/G. Prepared in 10mM PBS with 0.05% BSA & 0.05% azide. Also available WITHOUT BSA & azide at 1.0mg/ml.

---

### Storage and Stability

Antibody with azide - store at 2 to 8°C. Antibody without azide - store at -20 to -80°C. Antibody is stable for 24 months. Non-hazardous. No MSDS required.

---