

PAX7 (Rhabdomyosarcoma Marker) Antibody

Mouse Monoclonal Antibody [Clone PAX7/497]

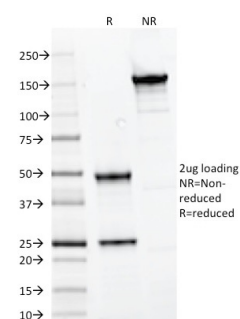
Catalog No	Format	Size
5081-MSM1-P0	Purified Ab with BSA and Azide at 200ug/ml	20 ug
5081-MSM1-P1	Purified Ab with BSA and Azide at 200ug/ml	100 ug
5081-MSM1-P1ABX	Purified Ab WITHOUT BSA and Azide at 1.0mg/ml	100 ug

Applications	Tested Dillution	Note
Flow Cytometry (Flow)	1-2ug/million cells	
Immunofluorescence (IF)	1-3ug/ml	
Western Blot (WB)	2-4ug/ml	

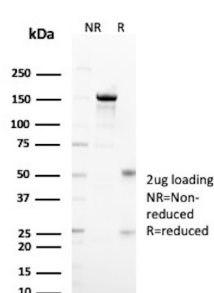
Product Details	
Clone	PAX7/497
Gene Name	PAX7
Immunogen	Recombinant fragment (aa301-505) of human PAX7 protein (exact sequence is proprietary)
Host	Mouse
Clonality	Monoclonal
Isotype / Light Chain	IgG1 / Kappa
Mol. Weight of Antigen	57kDa
Cellular Localization	Nucleus
Species Reactivity	Chicken, Human, Mouse, Rat, Zebrafish
Positive Control	A431, HeLa, Jurkat, MCF-7, U2OS or NIH/3T3 cells. Rhabdomyosarcoma (RMS).

*Optimal dilution for a specific application should be determined.

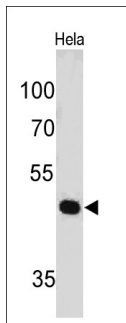
Product Images for PAX7 (Rhabdomyosarcoma Marker) Antibody



SDS-PAGE Analysis of Purified PAX7 Mouse Monoclonal Antibody (PAX7/497).



SDS-PAGE Analysis of Purified Paired box protein Pax-7 Mouse Monoclonal Antibody (PAX7/497). Confirmation of Purity and Integrity of Antibody.



Western Blot of HeLa cell lysate using PAX7 Mouse Monoclonal Antibody (PAX7/497).

Specificity & Comments

The Pax gene family of nuclear transcription factors is comprised of nine members that function during embryogenesis to regulate the temporal and position-dependent differentiation of cells. In addition, the family is involved in a variety of signal transduction pathways in the adult organism. Mutations in the Pax family of proteins have been linked to disease and cancer in humans. Pax-7 is a protein specifically expressed in cultured satellite cell-derived myoblasts. In situ hybridization reveals that Pax-7 is also expressed in satellite cells residing in adult muscle. A chromosomal aberration in the gene encoding Pax-7 causes rhabdomyosarcoma 2 (RMS2) (also called alveolar rhabdomyosarcoma).

Limitations and Warranty

This antibody is available for research use only and is not approved for use in diagnosis. There are no warranties, expressed or implied, which extend beyond this description. Company is not liable for any personal injury or economic loss resulting from this product.

Supplied As

200ug/ml of Ab Purified from Bioreactor Concentrate by Protein A/G. Prepared in 10mM PBS with 0.05% BSA & 0.05% azide. Also available WITHOUT BSA & azide at 1.0mg/ml.

Storage and Stability

Antibody with azide - store at 2 to 8°C. Antibody without azide - store at -20 to -80°C. Antibody is stable for 24 months. Non-hazardous. No MSDS required.

Research Areas

Cancer, Mesenchymal Stem Cell Differentiation