

## Recombinant PAX5 / BSAP (Early B-Cell Marker) Antibody

Mouse Monoclonal Antibody [Clone rPAX5/2060]

Catalog No	Format	Size
5079-MSM4-P0	Purified Ab with BSA and Azide at 200ug/ml	20 ug
5079-MSM4-P1	Purified Ab with BSA and Azide at 200ug/ml	100 ug
5079-MSM4-P1ABX	Purified Ab WITHOUT BSA and Azide at 1.0mg/ml	100 ug

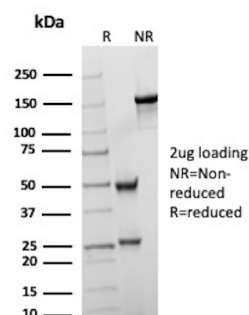
Applications	Tested Dillution	Note
Western Blot (WB)	2-4ug/ml	

### Product Details

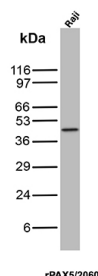
<b>Clone</b>	rPAX5/2060
<b>Gene Name</b>	PAX5
<b>Immunogen</b>	Recombinant full-length humanPAX5 protein
<b>Host</b>	Mouse
<b>Clonality</b>	Monoclonal
<b>Isotype / Light Chain</b>	IgG1 / Kappa
<b>Mol. Weight of Antigen</b>	42kDa
<b>Cellular Localization</b>	Nucleus
<b>Species Reactivity</b>	Human
<b>Positive Control</b>	Daudi or Ramos cells. Tonsil, Lymph Nodeor Colon Carcinoma., Spleen. Raji

\*Optimal dilution for a specific application should be determined.

### Product Images for Recombinant PAX5 / BSAP (Early B-Cell Marker) Antibody



SDS-PAGE Analysis of Purified Paired box protein Pax-5 Recombinant Mouse Monoclonal Antibody (rPAX5/2060). Confirmation of Purity and Integrity of Antibody.



Western Blot Analysis of human Raji cell lysate using PAX5 Mouse Recombinant Monoclonal Antibody (rPAX5/2060).

### Specificity & Comments

The specificity of this monoclonal antibody to its intended target was validated by HuProt™ Array, containing more than 19,000, full-length human proteins. The PAX5 gene is a member of thepaired box (PAX)family of transcription factors. The central feature of this gene family is a novel, highly conservedDNA-binding domain, known as thepaired box. The PAX proteins are important regulators in early development, and alterations in the expression of their genes are thought to contribute toneoplastic transformation. The PAX5 gene encodes theB-celllineage specific activator protein (BSAP) that is expressed at early, but not late stages of B-cell differentiation. Its expression has also been detected in developing CNS and testis; therefore, PAX5 gene product may not only play an important role in B-cell differentiation, but also in neural development andepitheliogenesis.

### Supplied As

200ug/ml of Ab Purified from Bioreactor Concentrate by Protein A/G. Prepared in 10mM PBS with0.05% BSA & 0.05% azide. Also available WITHOUT BSA & azide at 1.0mg/ml.

### Storage and Stability

Antibody with azide - store at 2 to 8°C. Antibody without azide - store at -20 to -80°C. Antibody is stable for 24 months. Non-hazardous. No MSDS required.

### Research Areas

Cancer, B Cell Markers, Transcription Factors

## Limitations and Warranty

This antibody is available for research use only and is not approved for use in diagnosis. There are no warranties, expressed or implied, which extend beyond this description. Company is not liable for any personal injury or economic loss resulting from this product.

---