

Recombinant Ornithine Decarboxylase-1 (ODC-1) Antibody

Mouse Monoclonal Antibody [Clone rODC1/487]

| Catalog No | Format | Size |
|-----------------|---|--------|
| 4953-MSM6-P0 | Purified Ab with BSA and Azide at 200ug/ml | 20 ug |
| 4953-MSM6-P1 | Purified Ab with BSA and Azide at 200ug/ml | 100 ug |
| 4953-MSM6-P1ABX | Purified Ab WITHOUT BSA and Azide at 1.0mg/ml | 100 ug |

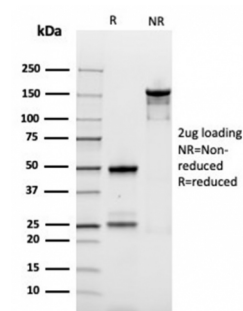
| Applications | Tested Dillution | Note |
|-------------------|------------------|------|
| Western Blot (WB) | 2-4ug/ml | |

Product Details

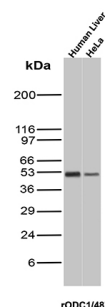
| | |
|------------------------|---|
| Clone | rODC1/487 |
| Gene Name | ODC1 |
| Immunogen | Recombinant full-length human ODC-1 protein |
| Host | Mouse |
| Clonality | Monoclonal |
| Isotype / Light Chain | IgG1 / Kappa |
| Mol. Weight of Antigen | 53kDa. |
| Species Reactivity | Human, Mouse, Rat |
| Positive Control | PC3 cells. Liver, HeLa. |

*Optimal dilution for a specific application should be determined.

Product Images for Recombinant Ornithine Decarboxylase-1 (ODC-1) Antibody



SDS-PAGE Analysis Purified ODC1 Recombinant Mouse Monoclonal Antibody (rODC1/487). Confirmation of Purity and Integrity of Antibody



Western Blot Analysis of Human Liver and HeLa lysates using Ornithine Decarboxylase-1 Recombinant Mouse Monoclonal Antibody (rODC1/487).

Specificity & Comments

Recognizes a 53kDa protein, identified as the Ornithine Decarboxylase (ODC-1). ODC is the initial and rate-limiting enzyme in the biosynthetic pathway of polyamines and is involved in the conversion of ornithine to putrescine. The biological activity of ODC-1 is rapidly induced in response to virtually all agents known to promote cell proliferation including hormones, drugs, growth factors, mitogens, and tumor promoters. Reportedly, ODC mRNA levels are elevated in lung carcinomas as well as in colon adenomas and carcinomas. ODC activity in colorectal carcinomas is greater than those in adenomas and normal mucosa.

Supplied As

200ug/ml of Ab purified from Bioreactor Concentrate by Protein A/G. Prepared in 10mM PBS with 0.05% BSA & 0.05% azide. Also available WITHOUT BSA & azide at 1.0mg/ml.

Storage and Stability

Antibody with azide - store at 2 to 8 °C. Antibody without azide - store at -20 to -80 °C. Antibody is stable for 24 months. Non-hazardous. No MSDS required.

Limitations and Warranty

This antibody is available for research use only and is not approved for use in diagnosis. There are no warranties, expressed or implied, which extend beyond this description. Company is not liable for any personal injury or economic loss resulting from this product.