

YBX1 / Y-box Binding Protein 1 / YB-1 (Tumor Biomarker) Antibody

Mouse Monoclonal Antibody [Clone YBX1/2430]

Catalog No	Format	Size
4904-MSM2-P0	Purified Ab with BSA and Azide at 200ug/ml	20 ug
4904-MSM2-P1	Purified Ab with BSA and Azide at 200ug/ml	100 ug
4904-MSM2-P1ABX	Purified Ab WITHOUT BSA and Azide at 1.0mg/ml	100 ug

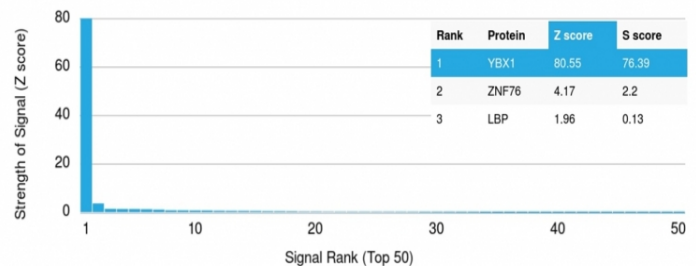
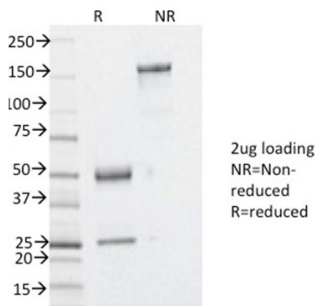
Applications	Tested Dillution	Note
Immunohistochemistry (IHC)	1-2ug/ml	30 min at RT. Staining of formalin-fixed tissues requires heating tissue sections in 10mM Tris with 1mM EDTA, pH 9.0, for 45 min at 95°C followed by cooling at RT for 20 minutes

Product Details

Clone	YBX1/2430
Gene Name	YBX1
Immunogen	Recombinant human full-length YBX1 protein
Host	Mouse
Clonality	Monoclonal
Isotype / Light Chain	IgG2b / Kappa
Mol. Weight of Antigen	36kDa
Cellular Localization	Cytoplasm, Cytoplasmic granule, Extracellular exosome, Nucleus, Secreted
Species Reactivity	Human
Positive Control	Breast or lung carcinoma., HEK293 or PC12 cells. Prostate, MCF-7

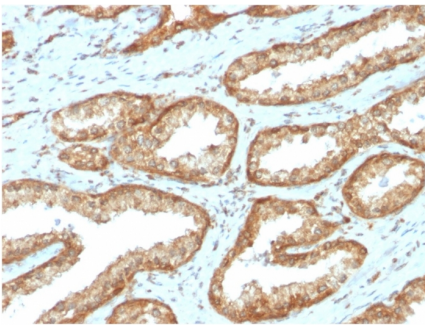
*Optimal dilution for a specific application should be determined.

Product Images for YBX1 / Y-box Binding Protein 1 / YB-1 (Tumor Biomarker) Antibody



SDS-PAGE Analysis of Purified YBX1 Mouse Monoclonal Antibody (YBX1/2430). Confirmation of Integrity and Purity of Antibody.

Analysis of Protein Array containing more than 19,000 full-length human proteins using YBX1 Mouse Monoclonal Antibody (YBX1/2430) Z- and S- Score: The Z-score represents the strength of a signal that a monoclonal antibody (Monoclonal Antibody) (in combination with a fluorescently-tagged anti-IgG secondary antibody) produces when binding to a particular protein on the HuProt™ array. Z-scores are described in units of standard deviations (SD's) above the mean value of all signals generated on that array. If targets on HuProt™ are arranged in descending order of the Z-score, the S-score is the difference (also in units of SD's) between the Z-score. S-score therefore represents the relative target specificity of a Monoclonal Antibody to its intended target. A Monoclonal Antibody is considered to be specific to its intended target, if the Monoclonal Antibody has an S-score of at least 2.5. For example, if a Monoclonal Antibody binds to protein X with a Z-score of 43 and to protein Y with a Z-score of 14, then the S-score for the binding of that Monoclonal Antibody to protein X is equal to 29.



Formalin-fixed, paraffin-embedded human Prostate Carcinoma stained with YBX1 Mouse Monoclonal Antibody (YBX1/2430)

Specificity & Comments

The specificity of this monoclonal antibody to its intended target was validated by HuProt™ Array, containing more than 19,000, full-length human proteins. Y-box binding protein-1 (YBX1) is the prototypic member of the cold shock protein family that fulfills numerous cellular functions. In the nucleus, YBX1 protein orchestrates transcription of proliferation-related genes, whereas in the cytoplasm it associates with mRNA and directs translation. In human tumor entities, such as breast, lung and prostate cancer, cellular YBX1 expression indicates poor clinical outcome, suggesting that YBX1 is an attractive marker to predict patients' prognosis.

Limitations and Warranty

This antibody is available for research use only and is not approved for use in diagnosis. There are no warranties, expressed or implied, which extend beyond this description. Company is not liable for any personal injury or economic loss resulting from this product.

Supplied As

200ug/ml of Ab Purified from Bioreactor Concentrate by Protein A/G. Prepared in 10mM PBS with 0.05% BSA & 0.05% azide. Also available WITHOUT BSA & azide at 1.0mg/ml.

Storage and Stability

Antibody with azide - store at 2 to 8°C. Antibody without azide - store at -20 to -80°C. Antibody is stable for 24 months. Non-hazardous. No MSDS required.

Research Areas

Cytokine Signaling, Immunology, Signal Transduction, Transcription Factors
