

Recombinant Nucleophosmin (Acute Myeloid Leukemia Marker) Antibody

Mouse Monoclonal Antibody [Clone rNPM1/1901]

Catalog No	Format	Size
4869-MSM9-P0	Purified Ab with BSA and Azide at 200ug/ml	20 ug
4869-MSM9-P1	Purified Ab with BSA and Azide at 200ug/ml	100 ug
4869-MSM9-P1ABX	Purified Ab WITHOUT BSA and Azide at 1.0mg/ml	100 ug

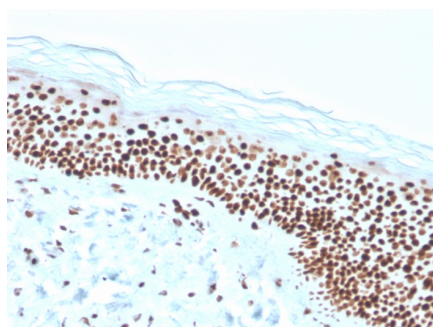
Applications	Tested Dillution	Note
Flow Cytometry (Flow)	1-2ug/million cells	
Immunohistochemistry (IHC)	1-2ug/ml	30 min at RT. Staining of formalin-fixed tissues requires heating tissue sections in 10mM Tris with 1mM EDTA, pH 9.0, for 45 min at 95°C followed by cooling at RT for 20 minutes
Western Blot (WB)	2-4ug/ml	

Product Details

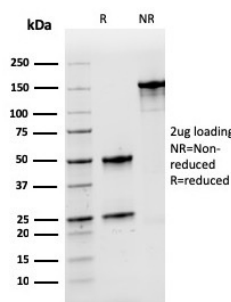
Clone	rNPM1/1901
Gene Name	NPM1
Immunogen	Recombinant human NPM1 protein fragment (aa185-287) (exact sequence is proprietary)
Host	Mouse
Clonality	Monoclonal
Isotype / Light Chain	IgG1 / Kappa
Mol. Weight of Antigen	33kDa
Cellular Localization	Centrosome, Cytoplasm, Cytoskeleton, Microtubule organizing center, Nucleolus, Nucleoplasm, Nucleus
Species Reactivity	Human
Positive Control	HeLa or A431 cells (WB/FC). Human skin or colon tissue (IHC)., MCF-7, Pancreas.

**Optimal dilution for a specific application should be determined.*

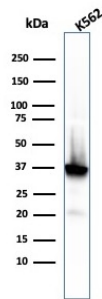
Product Images for Recombinant Nucleophosmin (Acute Myeloid Leukemia Marker) Antibody



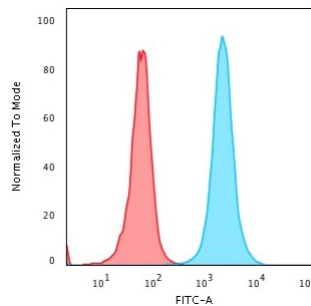
Formalin-fixed, paraffin-embedded human skin stained with Nucleophosmin Recombinant Mouse Monoclonal Antibody (rNPM1/1901).



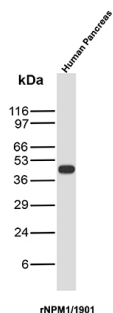
SDS-PAGE Analysis Purified NPM1 Recombinant Mouse Monoclonal Antibody (rNPM1/1901). Confirmation of Integrity and Purity of Antibody.



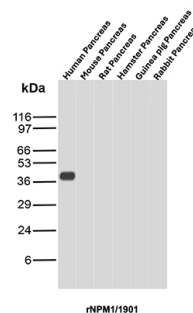
Western Blot Analysis of K562 cell lysate using NPM1 Recombinant Mouse Monoclonal Antibody (rNPM1/1901).



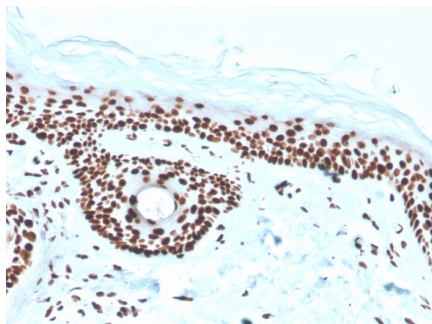
Flow Cytometric Analysis of PFA fixed HeLa cells using NPM1 Recombinant Mouse Monoclonal Antibody (rNPM1/1901) followed by goat anti-mouse IgG-CF488 (Blue); Isotype Control (Red).



Western Blot Analysis of Human Pancreas tissue lysate using NPM1 Recombinant Mouse Monoclonal Antibody (rNPM1/1901).



Western Blot Analysis of Pancreas tissue lysates of different species using NPM1 Recombinant Mouse Monoclonal Antibody (rNPM1/1901).



Formalin-fixed, paraffin-embedded human skin stained with Nucleophosmin Recombinant Mouse Monoclonal Antibody (rNPM1/1901).

Specificity & Comments

Recognizes a 33kDa glycoprotein, identified as Nucleophosmin (NPM). It is predominantly localized in the nucleus of cells in most tissues. NPM is involved in ribosomal assembly and rRNA transport. It is an abundant protein that is highly phosphorylated by Cdc2 kinase during mitosis. This phosphoprotein moves between the nucleus and the cytoplasm. It is thought to be involved in several processes including regulation of the ARF/p53 pathway. A number of genes are fusion partners, in particular the anaplastic lymphoma kinase gene on chromosome 2. Mutations in exon 12 affecting the C-terminus of the protein are associated with an aberrant cytoplasmic location. Mutations in this gene are associated with acute myeloid leukemia. The antibody may be a useful aid for classification of acute myeloid leukemia.

Limitations and Warranty

This antibody is available for research use only and is not approved for use in diagnosis. There are no warranties, expressed or implied, which extend beyond this description. Company is not liable for any personal injury or economic loss resulting from this product.

Supplied As

200ug/ml of Ab produced in HEK293 cell mammalian-based expression system. Prepared in 10mM PBS with 0.05% BSA & 0.05% azide. Also available WITHOUT BSA & azide at 1.0mg/ml.

Storage and Stability

Antibody with azide - store at 2 to 8°C. Antibody without azide - store at -20 to -80°C. Antibody is stable for 24 months. Non-hazardous. No MSDS required.

Research Areas

Infectious Disease, Transcription Factors