

Nucleophosmin (Acute Myeloid Leukemia Marker) Antibody

Mouse Monoclonal Antibody [Clone NPM1/3286]

Catalog No	Format	Size
4869-MSM6-P0	Purified Ab with BSA and Azide at 200ug/ml	20 ug
4869-MSM6-P1	Purified Ab with BSA and Azide at 200ug/ml	100 ug
4869-MSM6-P1ABX	Purified Ab WITHOUT BSA and Azide at 1.0mg/ml	100 ug

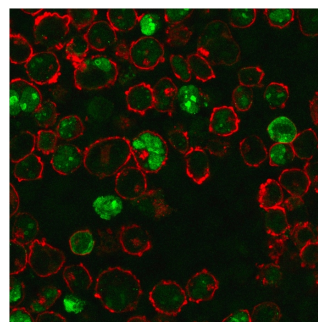
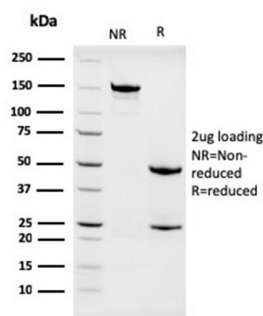
Applications	Tested Dillution	Note
Flow Cytometry (Flow)	1-2ug/million cells	
Immunofluorescence (IF)	1-3ug/ml	
Immunohistochemistry (IHC)	1-2ug/ml	30 min at RT. Staining of formalin-fixed tissues requires heating tissue sections in 10mM Tris with 1mM EDTA, pH 9.0, for 45 min at 95°C followed by cooling at RT for 20 minutes
Western Blot (WB)	2-4ug/ml	

Product Details

Clone	NPM1/3286
Gene Name	NPM1
Immunogen	Recombinant human NPM1 protein fragment (aa185-287) (exact sequence is proprietary)
Host	Mouse
Clonality	Monoclonal
Isotype / Light Chain	IgG1 / Kappa
Mol. Weight of Antigen	33kDa
Cellular Localization	Centrosome, Cytoplasm, Cytoskeleton, Microtubule organizing center, Nucleolus, Nucleoplasm, Nucleus
Species Reactivity	Human
Positive Control	K562 cells. Human colon or skin tissues (IHC).

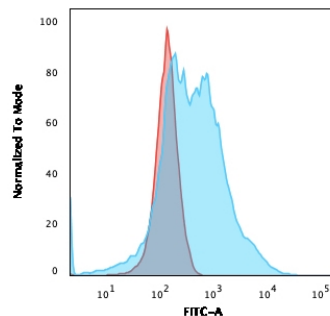
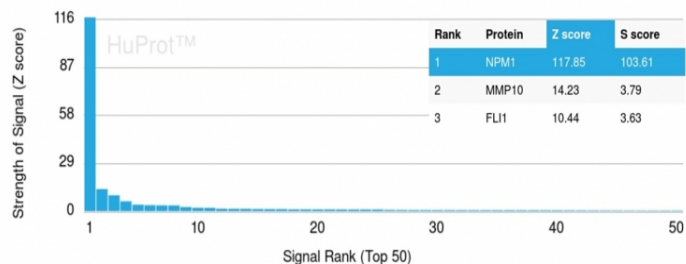
*Optimal dilution for a specific application should be determined.

Product Images for Nucleophosmin (Acute Myeloid Leukemia Marker) Antibody



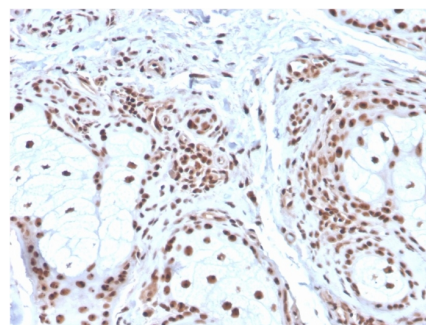
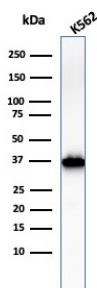
SDS-PAGE Analysis Purified Nucleophosmin Mouse Monoclonal Antibody (NPM1/3286). Confirmation of Integrity and Purity of Antibody.

Immunofluorescence staining of K562 cells using Nucleophosmin Mouse Monoclonal Antibody (NPM1/3286) followed by goat anti-Mouse IgG conjugated to CF488 (green). Nuclei are stained with Reddot.



Analysis of Protein Array containing more than 19,000 full-length human proteins using Nucleophosmin-Monospecific Mouse Monoclonal Antibody (NPM1/3286) Z- and S-Score: The Z-score represents the strength of a signal that a monoclonal antibody (MAb) (in combination with a fluorescently-tagged anti-IgG secondary antibody) produces when binding to a particular protein on the HuProt™ array. Z-scores are described in units of standard deviations (SD's) above the mean value of all signals generated on that array. If targets on HuProt™ are arranged in descending order of the Z-score, the S-score is the difference (also in units of SD's) between the Z-score. S-score therefore represents the relative target specificity of a MAb to its intended target. A MAb is considered to be specific to its intended target, if the MAb has an S-score of at least 2.5. For example, if a MAb binds to protein X with a Z-score of 43 and to protein Y with a Z-score of 14, then the S-score for the binding of that MAb to protein X is equal to 29.

Flow Cytometric Analysis of A549 cells using Nucleophosmin Mouse Monoclonal Antibody (NPM1/3286); followed by goat anti-mouse IgG-CF488 (Blue); Isotype Control (Red).



Western Blot Analysis of K562 cell lysate using Nucleophosmin Mouse Monoclonal Antibody (NPM1/3286).

Formalin-fixed, paraffin-embedded human Basal Cell Carcinoma stained with Nucleophosmin Mouse Monoclonal Antibody (NPM1/3286).

Specificity & Comments

Recognizes a 33kDa glycoprotein, identified as Nucleophosmin (NPM). It is predominantly localized in the nucleus of cells in most tissues. NPM is involved in ribosomal assembly and rRNA transport. It is an abundant protein that is highly phosphorylated by Cdc2 kinase during mitosis. This phosphoprotein moves between the nucleus and the cytoplasm. It is thought to be involved in several processes including regulation of the ARF/p53 pathway. A number of genes are fusion partners, in particular the anaplastic lymphoma kinase gene on chromosome 2. Mutations in exon 12 affecting the C-terminus of the protein are associated with an aberrant cytoplasmic location. Mutations in this gene are associated with acute myeloid leukemia. The antibody may be a useful aid for classification of acute myeloid leukemia.

Supplied As

200ug/ml of Ab Purified from Bioreactor Concentrate by Protein A/G. Prepared in 10mM PBS with 0.05% BSA & 0.05% azide. Also available WITHOUT BSA & azide at 1.0mg/ml.

Storage and Stability

Antibody with azide - store at 2 to 8°C. Antibody without azide - store at -20 to -80°C. Antibody is stable for 24 months. Non-hazardous. No MSDS required.

Research Areas

Infectious Disease, Transcription Factors

Limitations and Warranty

This antibody is available for research use only and is not approved for use in diagnosis. There are no warranties, expressed or implied, which extend beyond this description. Company is not liable for any personal injury or economic loss resulting from this product.