

## NKX2.2 (Neuroendocrine & Ewing's Sarcoma Marker) Antibody

Mouse Monoclonal Antibody [Clone NX2/1523]

Catalog No	Format	Size
4821-MSM3-P0	Purified Ab with BSA and Azide at 200ug/ml	20 ug
4821-MSM3-P1	Purified Ab with BSA and Azide at 200ug/ml	100 ug
4821-MSM3-P1ABX	Purified Ab WITHOUT BSA and Azide at 1.0mg/ml	100 ug

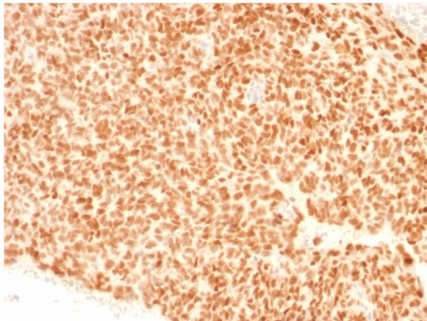
Applications	Tested Dillution	Note
Immunohistochemistry (IHC)	1-2ug/ml	30 min at RT. Staining of formalin-fixed tissues requires heating tissue sections in 10mM Tris with 1mM EDTA, pH 9.0, for 45 min at 95°C followed by cooling at RT for 20 minutes

### Product Details

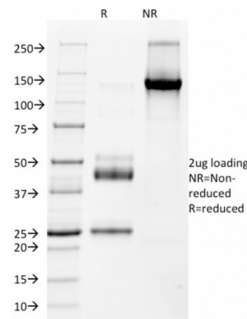
<b>Clone</b>	NX2/1523
<b>Gene Name</b>	NKX2-2
<b>Immunogen</b>	Recombinant fragment (around aa1-119) of human NKX2.2 protein (exact sequence is proprietary)
<b>Host</b>	Mouse
<b>Clonality</b>	Monoclonal
<b>Isotype / Light Chain</b>	IgG1 / Kappa
<b>Mol. Weight of Antigen</b>	40-50kDa
<b>Cellular Localization</b>	Nucleus
<b>Species Reactivity</b>	Human
<b>Positive Control</b>	Pancreas or Ewing's sarcoma.

\*Optimal dilution for a specific application should be determined.

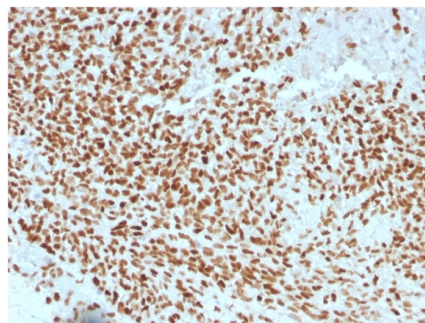
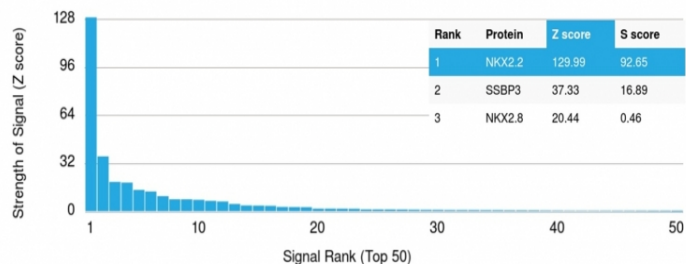
### Product Images for NKX2.2 (Neuroendocrine & Ewing's Sarcoma Marker) Antibody



Formalin-fixed, paraffin-embedded human Ewing's Sarcoma stained with NKX2.2 Mouse Monoclonal Antibody (NX2/1523).



SDS-PAGE Analysis of Purified NKX2.2 Mouse Monoclonal Antibody (NX2/1523). Confirmation of Integrity and Purity of Antibody.



Formalin-fixed, paraffin-embedded human Ewing's Sarcoma stained with NKX2.2 Mouse Monoclonal Antibody (NX2/1523).

Analysis of Protein Array containing >19,000 full-length human proteins using NKX2.2 Mouse Monoclonal Antibody (NX2/1523) Z- and S- Score: The Z-score represents the strength of a signal that a monoclonal antibody (MAb) (in combination with a fluorescently-tagged anti-IgG secondary antibody) produces when binding to a particular protein on the HuProt™ array. Z-scores are described in units of standard deviations (SD's) above the mean value of all signals generated on that array. If targets on HuProt™ are arranged in descending order of the Z-score, the S-score is the difference (also in units of SD's) between the Z-score. S-score therefore represents the relative target specificity of a MAb to its intended target. A MAb is considered to specific to its intended target, if the MAb has an S-score of at least 2.5. For example, if a MAb binds to protein X with a Z-score of 43 and to protein Y with a Z-score of 14, then the S-score for the binding of that MAb to protein X is equal to 29.

### Specificity & Comments

Expression of NKX2.2 has been found in neuroendocrine tumors of the gut, making it a potential marker for the study of gastrointestinal neuroendocrine tumors. More recently, NKX2.2 protein was identified as a target of EWS-FLI-1, the fusion protein specific to Ewing sarcoma, and was shown to be differentially upregulated in Ewing sarcoma on the basis of array-based gene expression analysis. It acts as a valuable marker for Ewing sarcoma, with a sensitivity of 93% and a specificity of 89%, and aids in the differential diagnosis of small round cell tumors.

### Supplied As

200ug/ml of Ab Purified from Bioreactor Concentrate by Protein A/G. Prepared in 10mM PBS with 0.05% BSA & 0.05% azide. Also available WITHOUT BSA & azide at 1.0mg/ml.

### Storage and Stability

Antibody with azide - store at 2 to 8°C. Antibody without azide - store at -20 to -80°C. Antibody is stable for 24 months. Non-hazardous. No MSDS required.

### Research Areas

Autophagy, Cardiovascular, Developmental Biology, Neural Stem Cells, Neuroscience, Stem Cell Differentiation

### Limitations and Warranty

This antibody is available for research use only and is not approved for use in diagnosis. There are no warranties, expressed or implied, which extend beyond this description. Company is not liable for any personal injury or economic loss resulting from this product.