

Recombinant NGF-Receptor (p75) / CD271 (Soft Tissue Tumor Marker) Antibody

Rabbit Monoclonal Antibody [Clone NGFR/2550R]

| Catalog No | Format | Size |
|-----------------|---|--------|
| 4804-RBM9-P0 | Purified Ab with BSA and Azide at 200ug/ml | 20 ug |
| 4804-RBM9-P1 | Purified Ab with BSA and Azide at 200ug/ml | 100 ug |
| 4804-RBM9-P1ABX | Purified Ab WITHOUT BSA and Azide at 1.0mg/ml | 100 ug |

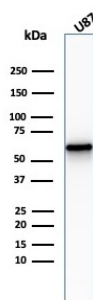
| Applications | Tested Dillution | Note |
|----------------------------|------------------|---|
| Immunohistochemistry (IHC) | 1-2ug/ml | 30 min at RT. Staining of formalin-fixed tissues requires heating tissue sections in 10mM Tris with 1mM EDTA, pH 9.0, for 45 min at 95°C followed by cooling at RT for 20 minutes |
| Western Blot (WB) | 2-4ug/ml | |

Product Details

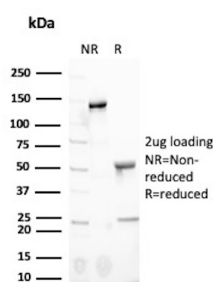
| | |
|-------------------------------|--|
| Clone | NGFR/2550R |
| Gene Name | NGFR |
| Immunogen | Recombinant human p75 NGFR protein fragment (around aa 281-421) (exact sequence is proprietary) |
| Host | Rabbit |
| Clonality | Monoclonal |
| Isotype / Light Chain | IgG / Kappa |
| Mol. Weight of Antigen | 75kDa |
| Cellular Localization | Cell membrane, Cell projection, Dendritic spine, Growth cone, Perikaryon |
| Species Reactivity | Human |
| Positive Control | Neurofibroma. Soma and axons of sensory neurons and ganglionic satellite cells. Melanomas., Neuronal axons, Schwann cells and perineural cells of peripheral nerves or tumors of nerve sheath differentiation e. G. Schwannoma |

**Optimal dilution for a specific application should be determined.*

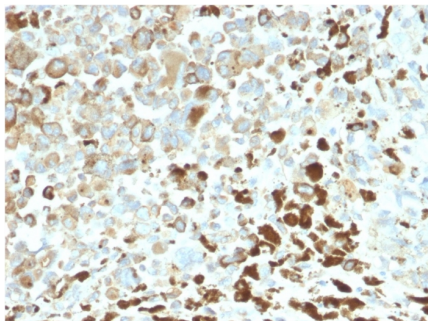
Product Images for Recombinant NGF-Receptor (p75) / CD271 (Soft Tissue Tumor Marker) Antibody



Western Blot Analysis of U87 cell lysate using NGFR Rabbit Recombinant Monoclonal Antibody (NGFR/2550R).



SDS-PAGE Analysis of Purified Tumor necrosis factor receptor superfamily member 16 Recombinant Rabbit Monoclonal Antibody (NGFR/2550R). Confirmation of Purity and Integrity of Antibody.



Formalin-fixed, paraffin-embedded human Melanoma stained with NGFR Rabbit Recombinant Monoclonal Antibody (NGFR/2550R).

Specificity & Comments

It recognizes a glycoprotein of 75kDa, identified as low affinity Nerve Growth Factor (NGF) Receptor (p75NGFR) or Neurotrophin Receptor (p75NTR). NGFR is expressed in various neural crest cells and their tumors such as melanocytes, melanomas, neuroblastomas, pheochromocytomas and neurofibromas. Reportedly, anti-NGFR is a reliable marker for desmoplastic and neurotropic melanomas. NGFR is expressed in mature non-neural cells such as perivascular cells, dental pulp cells, lymphoid follicular dendritic cells, basal epithelium of oral mucosa and hair follicles, prostate basal cells, and myoepithelial cells. Anti-NGFR stains the myoepithelial cells of breast ducts and intra-lobular fibroblasts of breast ducts.

Supplied As

200ug/ml of Ab Purified from Bioreactor Concentrate by Protein A/G. Prepared in 10mM PBS with 0.05% BSA & 0.05% azide. Also available WITHOUT BSA & azide at 1.0mg/ml.

Storage and Stability

Antibody with azide - store at 2 to 8°C. Antibody without azide - store at -20 to -80°C. Antibody is stable for 24 months. Non-hazardous. No MSDS required.

Research Areas

Neuroscience, AKT Signaling, Mesenchymal Stem Cell Differentiation, Nuclear Marker, Signal Transduction, Stem Cell Differentiation

Limitations and Warranty

This antibody is available for research use only and is not approved for use in diagnosis. There are no warranties, expressed or implied, which extend beyond this description. Company is not liable for any personal injury or economic loss resulting from this product.