

## Recombinant c-Myc Oncoprotein Antibody

Rabbit Monoclonal Antibody [Clone MYC2895R]

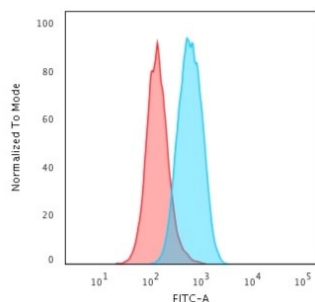
Catalog No	Format	Size
4609-RBM8-P0	Purified Ab with BSA and Azide	200ug/ml
4609-RBM8-P1	Purified Ab with BSA and Azide	200ug/ml
4609-RBM8-P1ABX	Purified Ab WITHOUT BSA and Azide	1.0mg/ml

Applications	Tested Dillution
Flow Cytometry (Flow)	1-2ug/million cells
Immunofluorescence (IF)	1-3ug/ml
Western Blot (WB)	2-4ug/ml

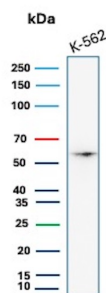
Product Details	
<b>Clone</b>	MYC2895R
<b>Gene Name</b>	MYC
<b>Immunogen</b>	A synthetic peptide, corresponding to aa 408-439 (AEEQKLISEEDLLRKRREQLKHKLEQLRNSCA) from C-terminus of human c-myc, coupled to KLH
<b>Host</b>	Rabbit
<b>Clonality</b>	Monoclonal
<b>Isotype / Light Chain</b>	IgG / Kappa
<b>Mol. Weight of Antigen</b>	62-64kDa
<b>Cellular Localization</b>	Nucleolus, Nucleoplasm, Nucleus
<b>Species Reactivity</b>	Human
<b>Positive Control</b>	HL-60 cells. Cervical Carcinoma., K-562

*\*Optimal dilution for a specific application should be determined.*

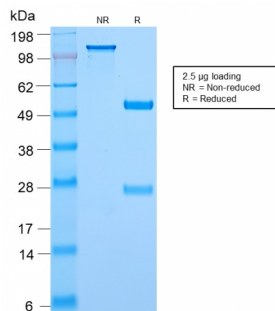
### Product Images for Recombinant c-Myc Oncoprotein Antibody



Flow Cytometric Analysis of K562 cells using c-Myc Rabbit Recombinant Monoclonal Antibody (MYC2895R) followed by Goat anti-Mouse IgG-CF488 (Blue); Isotype control (Red).



Western blot analysis of K-562 lysate using c-Myc Recombinant Rabbit Monoclonal Antibody (MYC2895R).



SDS-PAGE Analysis of Purified c-Myc Rabbit Recombinant Monoclonal Antibody (MYC2895R). Confirmation of Purity and Integrity of Antibody.

### Specificity & Comments

It recognizes a transcription factor of 64-67kDa, identified as c-myc. Its epitope spans between aa 410-419 (EQKLISEEDL) which is a specific portion of an alpha helical region of human c-myc protein. This MAb shows no cross-reaction with v-myc. c-myc is involved in the control of cell proliferation and differentiation and is amplified and/or overexpressed in a variety of tumors. Over-expression of c-myc protein occurs frequently in luminal cells of prostate intraepithelial neoplasia as well as in most primary carcinomas and metastatic disease.

### Research Areas

Apoptosis, Autophagy, Bladder Cancer, Breast Cancer, Cardiovascular, Colon Cancer, Cytokine Signaling, Developmental Biology, Immunology, Infectious Disease, Lung Cancer, MAPK Signaling, Nuclear Marker, Signal Transduction, Stem Cell Differentiation, Transcription Factors

### Known Applications & Suggested Dilutions

ELISA (For coating, order antibody without BSA) | Flow Cytometry (1-2ug/million cells) | Immunofluorescence (1-2ug/ml) | Optimal dilution for a specific application should be determined.

### Limitations and Warranty

This antibody is available for research use only and is not approved for use in diagnosis.

There are no warranties, expressed or implied, which extend beyond this description. Company is not liable for any personal injury or economic loss resulting from this product.

### Supplied As

200ug/ml of Ab Purified from Bioreactor Concentrate by Protein A/G. Prepared in 10mM PBS with 0.05% BSA & 0.05% azide. Also available WITHOUT BSA & azide at 1.0mg/ml.

### Storage and Stability

Antibody with azide - store at 2 to 8°C. Antibody without azide - store at -20 to -80°C. Antibody is stable for 24 months. Non-hazardous. No MSDS required.