

## c-Myc Oncoprotein Antibody

Mouse Monoclonal Antibody [Clone MYC275 + MYC909]

Catalog No	Format	Size
4609-MSM6-P0	Purified Ab with BSA and Azide at 200ug/ml	20 ug
4609-MSM6-P1	Purified Ab with BSA and Azide at 200ug/ml	100 ug
4609-MSM6-P1ABX	Purified Ab WITHOUT BSA and Azide at 1.0mg/ml	100 ug

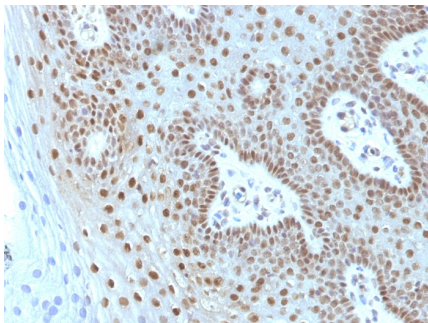
Applications	Tested Dillution	Note
Flow Cytometry (Flow)	1-2ug/million cells	
Immunofluorescence (IF)	1-3ug/ml	
Immunohistochemistry (IHC)	1-2ug/ml	30 min at RT. Staining of formalin-fixed tissues requires heating tissue sections in 10mM Tris with 1mM EDTA, pH 9.0, for 45 min at 95°C followed by cooling at RT for 20 minutes

### Product Details

<b>Clone</b>	MYC275 + MYC909
<b>Gene Name</b>	MYC
<b>Immunogen</b>	Recombinant human c-myc protein
<b>Host</b>	Mouse
<b>Clonality</b>	Monoclonal
<b>Isotype / Light Chain</b>	IgG1 / Kappa
<b>Mol. Weight of Antigen</b>	62-64kDa
<b>Cellular Localization</b>	Nucleolus, Nucleoplasm, Nucleus
<b>Species Reactivity</b>	Human
<b>Positive Control</b>	HL-60 cells. Cervical Carcinoma.

\*Optimal dilution for a specific application should be determined.

### Product Images for c-Myc Oncoprotein Antibody



Formalin-fixed, paraffin-embedded human Cervical Carcinoma stained with c-myc Monoclonal Antibody (MYC275 + MYC909).

### **Specificity & Comments**

It recognizes a transcription factor of 64-67kDa, identified as c-myc. This MAb shows no cross-reaction with v-myc. c-myc is involved in the control of cell proliferation and differentiation and is amplified and/or over-expressed in a variety of tumors. Over-expression of c-myc protein occurs frequently in luminal cells of prostate intraepithelial neoplasia as well as in most primary carcinomas and metastatic disease. Rearrangement of the MYC gene is found in 3% to 16% of diffuse large B-cell lymphoma (DLBCL's) and in nearly 100% of Burkitt lymphomas (BL). Identifying MYC status is important in establishing final diagnosis of DLBCL, BL, or B-cell lymphoma, with features intermediate between DLBCL and BL as well as in differential diagnoses of the lymphomas.

---

### **Limitations and Warranty**

This antibody is available for research use only and is not approved for use in diagnosis. There are no warranties, expressed or implied, which extend beyond this description. Company is not liable for any personal injury or economic loss resulting from this product.

---

### **Supplied As**

200ug/ml of Ab Purified from Bioreactor Concentrate by Protein A/G. Prepared in 10mM PBS with 0.05% BSA & 0.05% azide. Also available WITHOUT BSA & azide at 1.0mg/ml.

---

### **Storage and Stability**

Antibody with azide - store at 2 to 8°C. Antibody without azide - store at -20 to -80°C. Antibody is stable for 24 months. Non-hazardous. No MSDS required.

---

### **Research Areas**

Apoptosis, Autophagy, Bladder Cancer, Breast Cancer, Cancer, Cardiovascular, Colon Cancer, Cytokine Signaling, Developmental Biology, Hypoxia, Immunology, Infectious Disease, Lung Cancer, MAPK Signaling, Nuclear Marker, Signal Transduction, Stem Cell Differentiation, Transcription Factors

---