

c-Myc Oncoprotein Antibody

Mouse Monoclonal Antibody [Clone MYC275]

Catalog No	Format	Size
4609-MSM3-P0	Purified Ab with BSA and Azide at 200ug/ml	20 ug
4609-MSM3-P1	Purified Ab with BSA and Azide at 200ug/ml	100 ug
4609-MSM3-P1ABX	Purified Ab WITHOUT BSA and Azide at 1.0mg/ml	100 ug

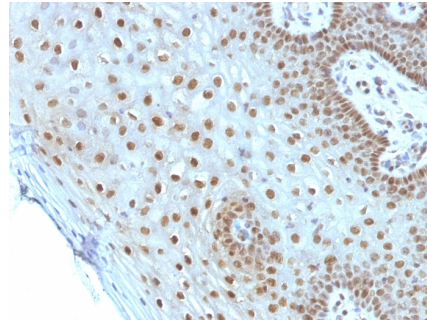
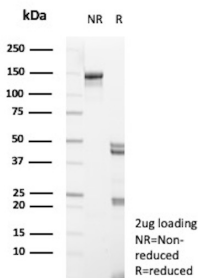
Applications	Tested Dillution	Note
Flow Cytometry (Flow)	1-2ug/million cells	
Immunofluorescence (IF)	1-3ug/ml	
Immunohistochemistry (IHC)	1-2ug/ml	30 min at RT. Staining of formalin-fixed tissues requires heating tissue sections in 10mM Tris with 1mM EDTA, pH 9.0, for 45 min at 95°C followed by cooling at RT for 20 minutes

Product Details

Clone	MYC275
Gene Name	MYC
Immunogen	Recombinant human c-myc protein
Host	Mouse
Clonality	Monoclonal
Isotype / Light Chain	IgG1 / Kappa
Mol. Weight of Antigen	62-64kDa
Cellular Localization	Nucleolus, Nucleoplasm, Nucleus
Species Reactivity	Human
Positive Control	HL-60 cells. Cervical Carcinoma.

*Optimal dilution for a specific application should be determined.

Product Images for c-Myc Oncoprotein Antibody



SDS-PAGE Analysis of Purified C-Myc Mouse Monoclonal Antibody (MYC275). Confirmation of Purity and Integrity of Antibody.

Formalin-fixed, paraffin-embedded human Cervical Carcinoma stained with c-Myc Monoclonal Antibody (MYC275).

Specificity & Comments

The c-Myc protein is a transcription factor, which is encoded by the c-Myc gene on human chromosome 8q24. c-Myc is commonly activated in a variety of tumor cells and plays an important role in cellular proliferation, differentiation, apoptosis and cell cycle progression. The phosphorylation of c-Myc has been investigated and previous studies have suggested a functional association between phosphorylation at Thr58/Ser62 by glycogen synthase kinase 3, cyclin dependent kinase, ERK2 and C-Jun N terminal Kinase (JNK) in cell proliferation and cell cycle regulation. Studies also have shown that c-Myc is essential for tumor cell development in vasculogenesis and angiogenesis that distribute blood throughout the cells, and which brought extensive attention in the development of new therapeutic approach for cancer treatment.

Limitations and Warranty

This antibody is available for research use only and is not approved for use in diagnosis. There are no warranties, expressed or implied, which extend beyond this description. Company is not liable for any personal injury or economic loss resulting from this product.

Supplied As

200ug/ml of Ab Purified from Bioreactor Concentrate by Protein A/G. Prepared in 10mM PBS with 0.05% BSA & 0.05% azide. Also available WITHOUT BSA & azide at 1.0mg/ml.

Storage and Stability

Antibody with azide - store at 2 to 8°C. Antibody without azide - store at -20 to -80°C. Antibody is stable for 24 months. Non-hazardous. No MSDS required.

Research Areas

Apoptosis, Autophagy, Bladder Cancer, Breast Cancer, Cancer, Cardiovascular, Colon Cancer, Cytokine Signaling, Developmental Biology, Hypoxia, Immunology, Infectious Disease, Lung Cancer, MAPK Signaling, Nuclear Marker, Signal Transduction, Stem Cell Differentiation, Transcription Factors
