

## MUC2 (Mucin 2) Antibody

Mouse Monoclonal Antibody [Clone CCP58]

Catalog No	Format	Size
4583-MSM1-P0	Purified Ab with BSA and Azide at 200ug/ml	20 ug
4583-MSM1-P1	Purified Ab with BSA and Azide at 200ug/ml	100 ug
4583-MSM1-P1ABX	Purified Ab WITHOUT BSA and Azide at 1.0mg/ml	100 ug

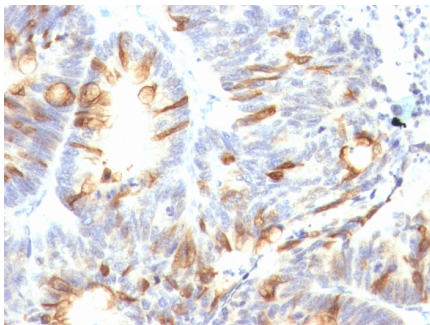
Applications	Tested Dillution	Note
Immunohistochemistry (IHC)	1-2ug/ml	30 min at RT. Staining of formalin-fixed tissues requires heating tissue sections in 10mM Tris with 1mM EDTA, pH 9.0, for 45 min at 95°C followed by cooling at RT for 20 minutes

### Product Details

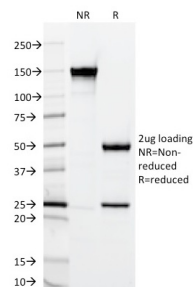
<b>Clone</b>	CCP58
<b>Gene Name</b>	MUC2
<b>Immunogen</b>	A synthetic peptide of 29 amino acids, KYPTTTPISTTTMTPTPTGTQTPPTT from MUC2 protein, coupled to KLH.
<b>Host</b>	Mouse
<b>Clonality</b>	Monoclonal
<b>Isotype / Light Chain</b>	IgG1 / Kappa
<b>Mol. Weight of Antigen</b>	520kDa
<b>Cellular Localization</b>	Secreted
<b>Species Reactivity</b>	Human
<b>Positive Control</b>	LS174T cells. Human small intestine or colon.

\*Optimal dilution for a specific application should be determined.

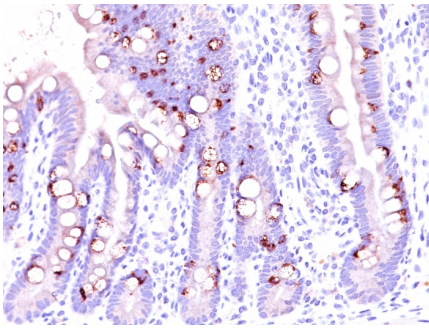
### Product Images for MUC2 (Mucin 2) Antibody



Formalin-fixed, paraffin-embedded human colon carcinoma stained with MUC2 Mouse Monoclonal Antibody (CCP58).



SDS-PAGE Analysis of Purified MUC2 Mouse Monoclonal Antibody (CCP58). Confirmation of Integrity and Purity of Antibody



Formalin-fixed, paraffin-embedded human intestine stained with MUC2 Mouse Monoclonal Antibody (CCP58).

### Specificity & Comments

Recognizes a single glycoprotein of 520kDa, identified as mucin 2 (MUC2). This MAb shows no cross-reaction with human milk fat globule membranes, MUC1, or MUC3. Its epitope has been defined as GTQTP(GlyThrGlnThrPro). Mucins are high molecular weight glycoproteins, which constitute the major component of the mucus layer that protects the gastric epithelium. MUC2 is specifically expressed in goblet cells of the small intestine & colon; in about 65% of colonic carcinomas and about 40% of gastric carcinomas. MUC2 is rarely expressed outside of the GI tract with the exceptions of mucinous carcinoma of breast and clear cell-type carcinomas of the ovary.

### Limitations and Warranty

This antibody is available for research use only and is not approved for use in diagnosis. There are no warranties, expressed or implied, which extend beyond this description. Company is not liable for any personal injury or economic loss resulting from this product.

### Supplied As

200ug/ml of Ab purified from Bioreactor Concentrate by Protein A/G. Prepared in 10mM PBS with 0.05% BSA & 0.05% azide. Also available WITHOUT BSA & azide at 1.0mg/ml.

### Storage and Stability

Antibody with azide - store at 2 to 8 °C. Antibody without azide - store at -20 to -80 °C. Antibody is stable for 24 months. Non-hazardous. No MSDS required.

### Research Areas

Cardiovascular