

## Recombinant MUC1 / CA15-3 / EMA / CD227 (Epithelial Marker) Antibody

Rabbit Monoclonal Antibody [Clone MUC1/2980R]

Catalog No	Format	Size
4582-RBM24-P0	Purified Ab with BSA and Azide at 200ug/ml	20 ug
4582-RBM24-P1	Purified Ab with BSA and Azide at 200ug/ml	100 ug
4582-RBM24-P1ABX	Purified Ab WITHOUT BSA or Azide at 1.0mg/ml	100 ug

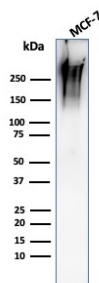
Applications	Tested Dillution	Note
Immunohistochemistry (IHC)	1-2ug/ml	30 min at RT. Staining of formalin-fixed tissues requires heating tissue sections in 10mM Tris with 1mM EDTA, pH 9.0, for 45 min at 95°C followed by cooling at RT for 20 minutes
Western Blot (WB)	2-4ug/ml	

### Product Details

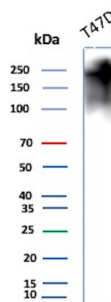
<b>Clone</b>	MUC1/2980R
<b>Immunogen</b>	Recombinant full-length human MUC1 protein
<b>Host</b>	Rabbit
<b>Clonality</b>	Monoclonal
<b>Isotype / Light Chain</b>	IgG / Kappa
<b>Mol. Weight of Antigen</b>	122.1kDa
<b>Cellular Localization</b>	Apical cell membrane, Cell membrane, Cytoplasm, Nucleus, Secreted
<b>Species Reactivity</b>	Human
<b>Positive Control</b>	Colon, endometrial carcinoma., MCF-7 or MDA-231 cells. Breast, Ovarian

\*Optimal dilution for a specific application should be determined.

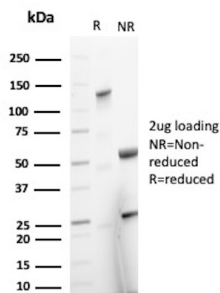
### Product Images for Recombinant MUC1 / CA15-3 / EMA / CD227 (Epithelial Marker) Antibody



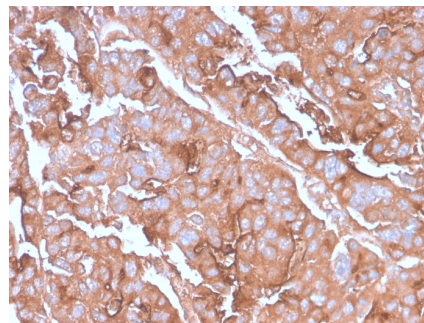
Western Blot Analysis of MCF-7 cell lysate using MUC1 Rabbit Recombinant Monoclonal Antibody (MUC1/2980R).



Western Blot Analysis of T47D cell lysate using MUC-1 Recombinant Rabbit Monoclonal Antibody (MUC1/2980R).



SDS-PAGE Analysis of Purified Mucin-1 Rabbit Monoclonal Antibody (MUC1/2980R). Confirmation of Purity and Integrity of Antibody.



Formalin-fixed, paraffin-embedded human Colon Carcinoma stained with MUC1 Rabbit Recombinant Monoclonal Antibody (MUC1/2980R).

### Specificity & Comments

This MAb recognizes full-length MUC1 in a glycosylation-independent manner and can bind to the fully glycosylated protein. The dominant epitope of this MAb is APDTR in the VNTR region. It reacts with the core peptide of the MUC1 protein, which is a member of a family of mucin glycoproteins that are characterized by high carbohydrate content, O-linked oligosaccharides, high molecular weight (200kDa) and an amino acid composition rich in serine, threonine, proline and glycine. The core protein contains a domain of 20 amino-acid tandem repeats that functions as multiple epitopes for the MAb. Incomplete glycosylation of some tumor-associated mucins may lead to variable unmasking of the multiple peptide epitopes leading to the observed differences in staining intensity between normal and malignant tissues. This MAb reacts with both normal and malignant epithelia of various tissues including breast and colon.

### Supplied As

200ug/ml of Ab produced in a mammalian-based expression system. Prepared in 10mM PBS with 0.05% BSA & 0.05% azide. Also available WITHOUT BSA & azide at 1.0mg/ml.

### Storage and Stability

Antibody with azide - store at 2 to 8 °C. Antibody without azide - store at -20 to -80 °C. Antibody is stable for 24 months. Non-hazardous. No MSDS required.

### Limitations and Warranty

This antibody is available for research use only and is not approved for use in diagnosis. There are no warranties, expressed or implied, which extend beyond this description. Company is not liable for any personal injury or economic loss resulting from this product.