

## Recombinant MUC1 / CA15-3 / EMA / CD227 (Epithelial Marker) Antibody

Rabbit Monoclonal Antibody [Clone MUC1/2818R]

Catalog No	Format	Size
4582-RBM22-P0	Purified Ab with BSA and Azide at 200ug/ml	20 ug
4582-RBM22-P1	Purified Ab with BSA and Azide at 200ug/ml	100 ug
4582-RBM22-P1ABX	Purified Ab WITHOUT BSA and Azide at 1.0mg/ml	100 ug

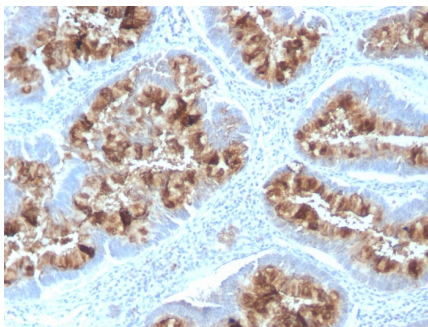
Applications	Tested Dillution	Note
Immunohistochemistry (IHC)	1-2ug/ml	30 min at RT. Staining of formalin-fixed tissues requires heating tissue sections in 10mM Tris with 1mM EDTA, pH 9.0, for 45 min at 95°C followed by cooling at RT for 20 minutes
Western Blot (WB)	2-4ug/ml	

### Product Details

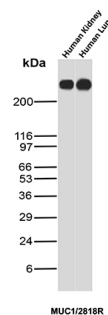
<b>Clone</b>	MUC1/2818R
<b>Gene Name</b>	MUC1
<b>Immunogen</b>	Human milk-fat globule membranes (HMFGM)
<b>Host</b>	Rabbit
<b>Clonality</b>	Monoclonal
<b>Isotype / Light Chain</b>	IgG / Kappa
<b>Mol. Weight of Antigen</b>	265-400kDa
<b>Cellular Localization</b>	Apical cell membrane, Cell membrane, Cytoplasm, Nucleus, Secreted
<b>Species Reactivity</b>	Human, Mouse
<b>Positive Control</b>	Human Lung, Kidney, Colon, endometrial carcinoma., MCF-7 or MDA-231 cells. Breast, Ovarian

\*Optimal dilution for a specific application should be determined.

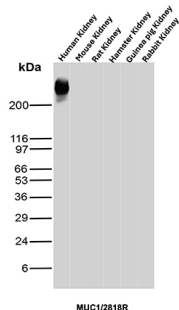
### Product Images for Recombinant MUC1 / CA15-3 / EMA / CD227 (Epithelial Marker) Antibody



Formalin-fixed, paraffin-embedded human Colon stained with MUC1 Rabbit Recombinant Monoclonal Antibody (MUC1/2818R).

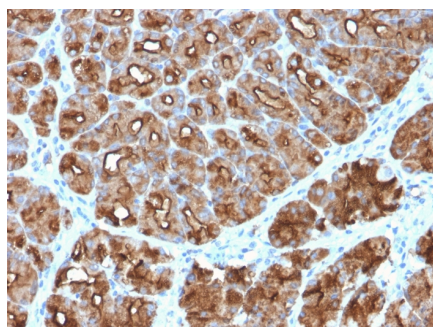


Western Blot Analysis of Human kidney and Human Lung tissue lysates using MUC-1 Recombinant Rabbit Monoclonal Antibody (MUC1/2818R).



Western blot analyses of human lung, mouse lung, rat lung, hamster lung, guinea pig lung and rabbit lung tissue lysates using MUC-1 Recombinant Rabbit Monoclonal Antibody (MUC1/2818R).

SDS-PAGE Analysis of Purified MUC1 Rabbit Recombinant Monoclonal Antibody (MUC1/2818R). Confirmation of Purity and Integrity of Antibody.



Formalin-fixed, paraffin-embedded human Stomach Carcinoma stained with MUC1 Rabbit Recombinant Monoclonal Antibody (MUC1/2818R).

### Specificity & Comments

This MAb reacts with MUC1. The dominant epitope of this MAb has not yet been determined. MUC1 is a large cell surface mucin glycoprotein expressed by most glandular and ductal epithelial cells and some hematopoietic cell lineages. It is expressed on most secretory epithelium, including mammary gland and some hematopoietic cells. It is expressed abundantly in lactating mammary glands and over expressed abundantly in 90% breast carcinomas and metastases. Transgenic MUC1 has been shown to associate with all four c-erbB receptors and localize with c-erbB1 (EGFR) in lactating glands. The MUC1 gene contains seven exons and produces several different alternatively spliced variants. The major expressed form of MUC1 uses all seven exons and is a type 1 transmembrane protein with a large extracellular tandem repeat domain. The tandem repeat domain is highly O glycosylated and alterations in glycosylation have been shown in epithelial cancer cells. Antibody to EMA is useful as a pan-epithelial marker for detecting early metastatic loci of carcinoma in bone marrow or liver.

### Limitations and Warranty

This antibody is available for research use only and is not approved for use in diagnosis. There are no warranties, expressed or implied, which extend beyond this description. Company is not liable for any personal injury or economic loss resulting from this product.

### Supplied As

200ug/ml of Ab Purified from Bioreactor Concentrate by Protein A/G. Prepared in 10mM PBS with 0.05% BSA & 0.05% azide. Also available WITHOUT BSA & azide at 1.0mg/ml.

### Storage and Stability

Antibody with azide - store at 2 to 8°C. Antibody without azide - store at -20 to -80°C. Antibody is stable for 24 months. Non-hazardous. No MSDS required.

### Research Areas

Cytokine Signaling, Immunology, Infectious Disease