

Recombinant Moesin Antibody

Mouse Monoclonal Antibody [Clone rMSN/492]

Catalog No	Format	Size
4478-MSM4-P0	Purified Ab with BSA and Azide at 200ug/ml	20 ug
4478-MSM4-P1	Purified Ab with BSA and Azide at 200ug/ml	100 ug
4478-MSM4-P1ABX	Purified Ab WITHOUT BSA or Azide at 1.0mg/ml	100 ug

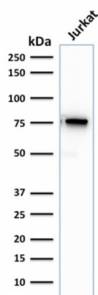
Applications	Tested Dillution	Note
Immunohistochemistry (IHC)	1-2ug/ml	30 min at RT. Staining of formalin-fixed tissues requires heating tissue sections in 10mM Tris with 1mM EDTA, pH 9.0, for 45 min at 95°C followed by cooling at RT for 20 minutes
Western Blot (WB)	2-4ug/ml	

Product Details

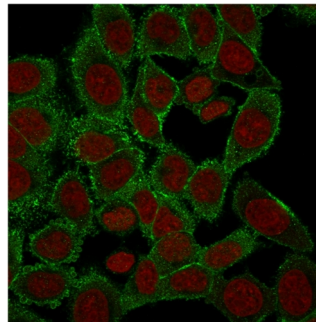
Clone	rMSN/492
Immunogen	Recombinant full-length human Moesin protein
Host	Mouse
Clonality	Monoclonal
Isotype / Light Chain	IgG1 / Kappa
Mol. Weight of Antigen	67.82kDa
Cellular Localization	Apical cell membrane, Cell membrane, Cell projection, Cytoplasm, Cytoskeleton, Microvillus, Microvillus membrane
Species Reactivity	Human
Positive Control	CH3LC or HUVEC cells. Uterus, HT-29, Jurkat, Melanoma, Placenta, Testicular Carcinoma., Tonsil.Heart, Skeletal muscle, HeLa, MCF7.

*Optimal dilution for a specific application should be determined.

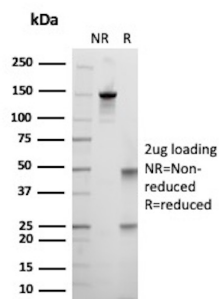
Product Images for Recombinant Moesin Antibody



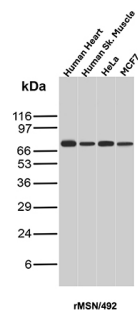
Western Blot Analysis of human Jurkat cell lysate using Moesin Mouse Recombinant Monoclonal Antibody (rMSN/492).



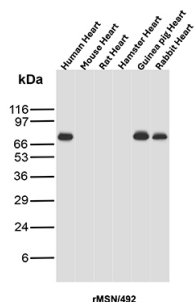
Immunofluorescence Analysis of PFA-fixed HeLa cells labeling with Moesin Mouse Monoclonal Antibody (rMSN/492) followed by Goat anti-Mouse IgG-CF488 (Green). The nuclear counterstain is Reddot (Red)



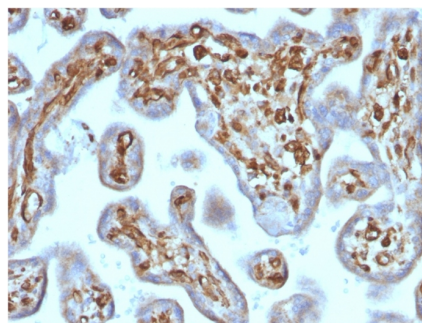
SDS-PAGE Analysis of Purified Moesin Recombinant Mouse Monoclonal Antibody (rMSN/492). Confirmation of Purity and Integrity of Antibody.



Western Blot Analysis of Human Heart, Human Skeletal muscle, HeLa, and MCF7 lysates using Moesin Mouse Recombinant Monoclonal Antibody (rMSN/492).



Western Blot Analysis of Heart tissue lysates using Moesin Mouse Recombinant Monoclonal Antibody (rMSN/492).



Formalin-fixed, paraffin-embedded human Placenta stained with Moesin Mouse Recombinant Monoclonal Antibody (rMSN/492).

Specificity & Comments

Recognizes 78kDa moesin protein. Moesin, a member of the talin-4.1 superfamily, is a linking protein of the sub-membranous actin cytoskeleton. It is expressed in variable amounts in cells of different phenotypes such as macrophages, lymphocytes, fibroblastic, endothelial, epithelial, and neuronal cell lines but not in blood cells. The ERM proteins, ezrin, radixin, and moesin are involved in a variety of cellular functions, such as cell adhesion, migration, and the organization of cell surface structures, and are highly homologous, both in protein sequence and in functional activity, with merlin/schwannomin, a neurofibromatosis-2-associated tumor-suppressor protein. Cell lines of epithelial and mesothelial origin contain both moesin and radixin whereas cells of endothelial and lymphoid origin express moesin.

Limitations and Warranty

This antibody is available for research use only and is not approved for use in diagnosis. There are no warranties, expressed or implied, which extend beyond this description. Company is not liable for any personal injury or economic loss resulting from this product.

Supplied As

200ug/ml of Ab produced in a mammalian-based expression system. Prepared in 10mM PBS with 0.05% BSA & 0.05% azide. Also available WITHOUT BSA & azide at 1.0mg/ml.

Storage and Stability

Antibody with azide - store at 2 to 8 °C. Antibody without azide - store at -20 to -80 °C. Antibody is stable for 24 months. Non-hazardous. No MSDS required.