

## Recombinant MMP3 (Marker of Metastasis and Rheumatoid Arthritis) Antibody

Mouse Monoclonal Antibody [Clone rMMP3/1730]

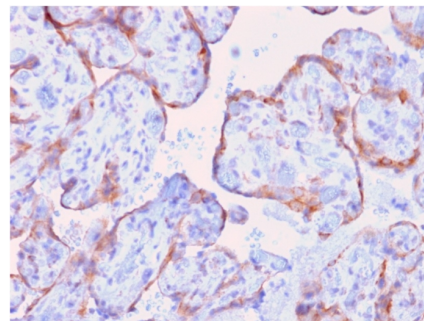
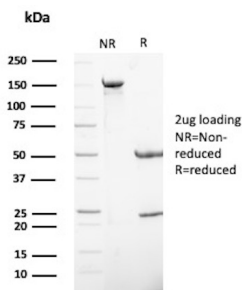
Catalog No	Format	Size
4314-MSM4-P0	Purified Ab with BSA and Azide at 200ug/ml	20 ug
4314-MSM4-P1	Purified Ab with BSA and Azide at 200ug/ml	100 ug
4314-MSM4-P1ABX	Purified Ab WITHOUT BSA or Azide at 1.0mg/ml	100 ug

Applications	Tested Dillution	Note
Immunohistochemistry (IHC)	1-2ug/ml	30 min at RT. Staining of formalin-fixed tissues requires heating tissue sections in 10mM Tris with 1mM EDTA, pH 9.0, for 45 min at 95°C followed by cooling at RT for 20 minutes
Western Blot (WB)	2-4ug/ml	

Product Details	
<b>Clone</b>	rMMP3/1730
<b>Immunogen</b>	Recombinant fragment (around aa317-327) of the human MMP3 protein (exact sequence is proprietary)
<b>Host</b>	Mouse
<b>Clonality</b>	Monoclonal
<b>Isotype / Light Chain</b>	IgG1 / Kappa
<b>Mol. Weight of Antigen</b>	53.98kDa
<b>Cellular Localization</b>	Cytoplasm, Extracellular matrix, Extracellular space, Nucleus, Secreted
<b>Species Reactivity</b>	Human
<b>Positive Control</b>	A431 cells. Prostate or Lung Carcinoma.

\*Optimal dilution for a specific application should be determined.

### Product Images for Recombinant MMP3 (Marker of Metastasis and Rheumatoid Arthritis) Antibody



SDS-PAGE Analysis of Purified Stromelysin-1 Recombinant Mouse Monoclonal Antibody (rMMP3/1730). Confirmation of Purity and Integrity of Antibody.

Formalin-fixed, paraffin-embedded human spleen stained with MMP3 Mouse Recombinant Monoclonal Antibody (rMMP3/1730).

### **Specificity & Comments**

The matrix metalloproteinases (MMP) are a family of peptidase enzymes responsible for the degradation of extracellular matrix components, including collagen, gelatin, fibronectin, laminin and proteoglycan. Transcription of MMP genes is differentially activated by phorbol ester, lipopolysaccharide (LPS) or staphylococcal enterotoxin B (SEB). MMP catalysis requires both calcium and zinc. MMP-3, MMP-10 and MMP-11 (also designated stromelysin-1, 2 and 3, respectively) activate procollagenase. MMP-3 activation of procollagenase can occur via two pathways. Direct activation by MMP-3 is slow and activation by MMP-3 in conjunction with tissue or plasma proteinases is rapid. MMP-10 is expressed in small intestine, and at lower levels in lung and heart. MMP-11 is specifically expressed in stromal cells of breast carcinomas and contributes to epithelial cell malignancies.

---

### **Limitations and Warranty**

This antibody is available for research use only and is not approved for use in diagnosis. There are no warranties, expressed or implied, which extend beyond this description. Company is not liable for any personal injury or economic loss resulting from this product.

---

### **Supplied As**

200ug/ml of Ab produced in a mammalian-based expression system. Prepared in 10mM PBS with 0.05% BSA & 0.05% azide. Also available WITHOUT BSA & azide at 1.0mg/ml.

---

### **Storage and Stability**

Antibody with azide - store at 2 to 8 °C. Antibody without azide - store at -20 to -80 °C. Antibody is stable for 24 months. Non-hazardous. No MSDS required.

---