

MMP2 / Collagenase Type IV A (Tumor Metastasis Marker) Antibody

Mouse Monoclonal Antibody [Clone MMP2/1501]

Catalog No	Format	Size
4313-MSM1-P0	Purified Ab with BSA and Azide at 200ug/ml	20 ug
4313-MSM1-P1	Purified Ab with BSA and Azide at 200ug/ml	100 ug
4313-MSM1-P1ABX	Purified Ab WITHOUT BSA and Azide at 1.0mg/ml	100 ug

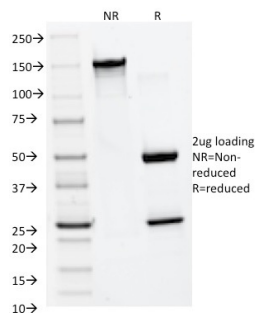
Applications	Tested Dillution	Note
Western Blot (WB)	2-4ug/ml	

Product Details

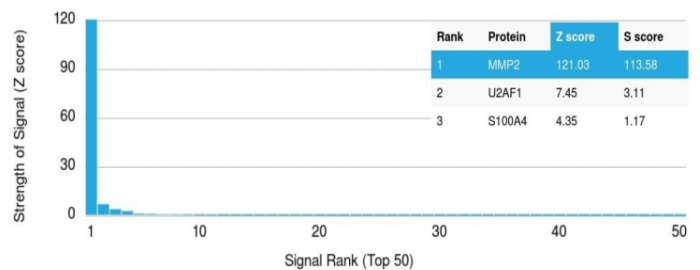
Clone	MMP2/1501
Gene Name	MMP2
Immunogen	Recombinant human MMP2 protein fragment (aa 444-575) (exact sequence is proprietary)
Host	Mouse
Clonality	Monoclonal
Isotype / Light Chain	IgG1 / Kappa
Mol. Weight of Antigen	72kDa (Pro); 63kDa (cleaved)
Cellular Localization	Cytoplasm, Extracellular matrix, Extracellular space, Membrane, Mitochondrion, Nucleus, Secreted
Species Reactivity	Human
Positive Control	U-138 MG or U-87 MG cells. Placenta or Colon Carcinoma.

*Optimal dilution for a specific application should be determined.

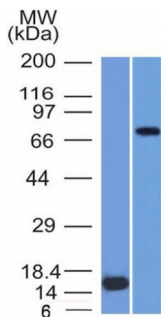
Product Images for MMP2 / Collagenase Type IV A (Tumor Metastasis Marker) Antibody



SDS-PAGE Analysis of Purified MMP2 Monoclonal Antibody (MMP2/1501). Confirmation of Integrity and Purity of Antibody.



Analysis of Protein Array containing more than 19,000 full-length human proteins using MMP2 Mouse Monoclonal Antibody (MMP2/1501) Z- and S- Score: The Z-score represents the strength of a signal that a monoclonal antibody (Monoclonal Antibody) (in combination with a fluorescently-tagged anti-IgG secondary antibody) produces when binding to a particular protein on the HuProt™ array. Z-scores are described in units of standard deviations (SD's) above the mean value of all signals generated on that array. If targets on HuProt™ are arranged in descending order of the Z-score, the S-score is the difference (also in units of SD's) between the Z-score. S-score therefore represents the relative target specificity of a Monoclonal Antibody to its intended target. A Monoclonal Antibody is considered to be specific to its intended target, if the Monoclonal Antibody has an S-score of at least 2.5. For example, if a Monoclonal Antibody binds to protein X with a Z-score of 43 and to protein Y with a Z-score of 14, then the S-score for the binding of that Monoclonal Antibody to protein X is equal to 29.



Western Blot of (1) Recombinant MMP2 protein and (2) U87 cell lysate using MMP2 Monoclonal Antibody (MMP2/1501).

Specificity & Comments

It recognizes a protein of 72kDa, which is identified as MMP2. The matrix metalloproteinases (MMP) are a family of peptidase enzymes responsible for the degradation of extracellular matrix components, including collagen, gelatin, Fibronectin, Laminin and proteoglycan. Transcription of MMP genes is differentially activated by phorbol ester, lipopolysaccharide (LPS) or staphylococcal enterotoxin B (SEB). MMP catalysis requires both calcium and zinc. MMP-2 (also designated type IV collagenase) cleaves collagen types IV,V, VII and X and gelatin type I. Activation of MMP-2 secretion requires the Ras signaling pathway.

Supplied As

200ug/ml of Ab Purified from Bioreactor Concentrate by Protein A/G. Prepared in 10mM PBS with 0.05% BSA & 0.05% azide. Also available WITHOUT BSA & azide at 1.0mg/ml.

Storage and Stability

Antibody with azide - store at 2 to 8°C. Antibody without azide - store at -20 to -80°C. Antibody is stable for 24 months. Non-hazardous. No MSDS required.

Research Areas

Angiogenesis, Autophagy, BBB VCAM-1 Signaling, Bladder Cancer, Cardiovascular, Colon Cancer, Cytokine Signaling, Developmental Biology, Hypoxia, Immunology, Signal Transduction

Limitations and Warranty

This antibody is available for research use only and is not approved for use in diagnosis. There are no warranties, expressed or implied, which extend beyond this description. Company is not liable for any personal injury or economic loss resulting from this product.