

CD10 (Membrane Metalloendopeptidase) Antibody

Mouse Monoclonal Antibody [Clone MME/2580]

Catalog No	Format	Size
4311-MSM15-P0	Purified Ab with BSA and Azide at 200ug/ml	20 ug
4311-MSM15-P1	Purified Ab with BSA and Azide at 200ug/ml	100 ug
4311-MSM15-P1ABX	Purified Ab WITHOUT BSA and Azide at 1.0mg/ml	100 ug

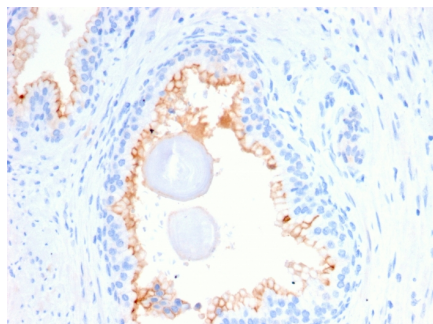
Applications	Tested Dillution	Note
Immunohistochemistry (IHC)	1-2ug/ml	30 min at RT. Staining of formalin-fixed tissues requires heating tissue sections in 10mM Tris with 1mM EDTA, pH 9.0, for 45 min at 95°C followed by cooling at RT for 20 minutes

Product Details

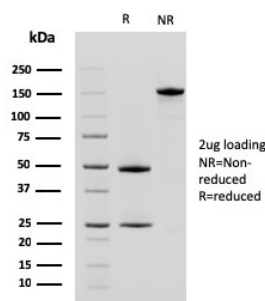
Clone	MME/2580
Gene Name	MME
Immunogen	Recombinant human CD10 protein fragment (aa 583-740) (exact sequence is proprietary)
Host	Mouse
Clonality	Monoclonal
Isotype / Light Chain	IgG1 / Kappa
Mol. Weight of Antigen	100kDa
Cellular Localization	Cell membrane
Species Reactivity	Human
Positive Control	small intestine or kidney (IHC)., Tonsil

*Optimal dilution for a specific application should be determined.

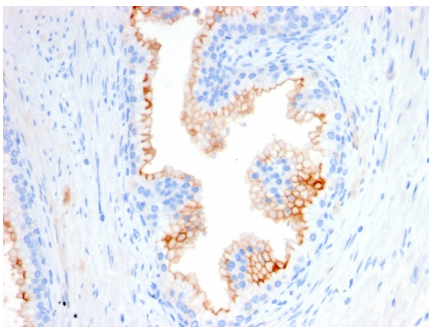
Product Images for CD10 (Membrane Metalloendopeptidase) Antibody



Formalin-fixed, paraffin-embedded human Prostate Carcinoma stained with CD10 Mouse Monoclonal Antibody (MME/2580).



SDS-PAGE Analysis of Purified CD10 Mouse Monoclonal Antibody (MME/2580). Confirmation of Purity and Integrity of Antibody.



Formalin-fixed, paraffin-embedded human Prostate Carcinoma stained with CD10 Mouse Monoclonal Antibody (MME/2580).

Specificity & Comments

Recognizes a 100kDa glycoprotein, identified as CD10, also known as Common Acute Lymphocytic Leukemia Antigen (CALLA). It is a cell surface enzyme with neutral metalloendopeptidase activity, which inactivates a variety of biologically active peptides. CD10 is expressed on the cells of lymphoblastic, Burkitt's, and follicular germinal center lymphomas, and on cells from patients with chronic myelocytic leukemia (CML). It is also expressed on the surface of normal early lymphoid progenitor cells, immature B cells within adult bone marrow and germinal center B cells within lymphoid tissue. CD10 is also present on breast myoepithelial cells, bile canaliculi, fibroblasts, with especially high expression on the brush border of kidney and gut epithelial cells.

Limitations and Warranty

This antibody is available for research use only and is not approved for use in diagnosis. There are no warranties, expressed or implied, which extend beyond this description. Company is not liable for any personal injury or economic loss resulting from this product.

Supplied As

200ug/ml of Ab Purified from Bioreactor Concentrate by Protein A/G. Prepared in 10mM PBS with 0.05% BSA & 0.05% azide. Also available WITHOUT BSA & azide at 1.0mg/ml.

Storage and Stability

Antibody with azide - store at 2 to 8°C. Antibody without azide - store at -20 to -80°C. Antibody is stable for 24 months. Non-hazardous. No MSDS required.

Research Areas

B Cell Markers, Cardiovascular, Hematopoietic Stem Cells, Immunology
