

CD10 (Membrane Metalloendopeptidase) Antibody

Mouse Monoclonal Antibody [Clone FR4D11]

Catalog No	Format	Size
4311-MSM1-P0	Purified Ab with BSA and Azide at 200ug/ml	20 ug
4311-MSM1-P1	Purified Ab with BSA and Azide at 200ug/ml	100 ug
4311-MSM1-P1ABX	Purified Ab WITHOUT BSA and Azide at 1.0mg/ml	100 ug

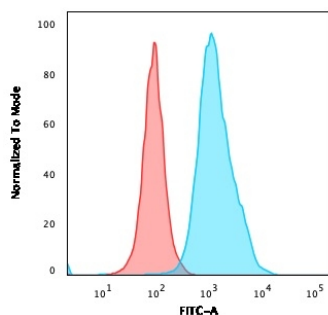
Applications	Tested Dillution	Note
Flow Cytometry (Flow)	1-2ug/million cells	
Immunofluorescence (IF)	1-3ug/ml	

Product Details

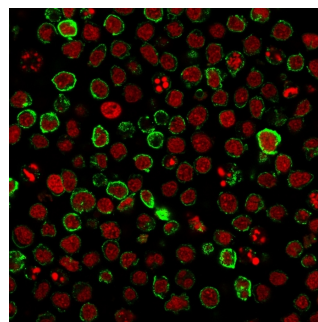
Clone	FR4D11
Gene Name	MME
Immunogen	Raji cells
Host	Mouse
Clonality	Monoclonal
Isotype / Light Chain	IgG1 / Kappa
Mol. Weight of Antigen	100kDa
Cellular Localization	Cell membrane
Species Reactivity	Human
Positive Control	Ramos cells (FACS/IF).

*Optimal dilution for a specific application should be determined.

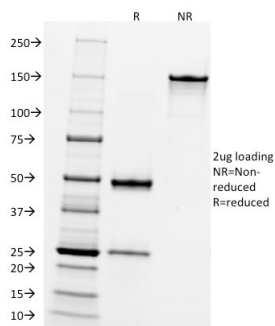
Product Images for CD10 (Membrane Metalloendopeptidase) Antibody



Flow Cytometric Analysis of Ramos cells using CD10 Mouse Monoclonal Antibody (FR4D11) followed by goat anti-Mouse IgG-CF488 (Blue); Isotype control (Red).



Immunofluorescence staining of Ramos cells using CD10 Mouse Monoclonal Antibody (FR4D11) followed by goat anti-Mouse IgG conjugated to CF488 (green). Nuclei are stained with Reddot.



SDS-PAGE Analysis of Purified CD10 Mouse Monoclonal Antibody (FR4D11).
Confirmation of Integrity and Purity of Antibody

Specificity & Comments

Recognizes a 100kDa glycoprotein, identified as CD10, also known as Common Acute Lymphocytic Leukemia Antigen (CALLA). It is a cell surface enzyme with neutral metalloendopeptidase activity, which inactivates a variety of biologically active peptides. CD10 is expressed on the cells of lymphoblastic, Burkitt's, and follicular germinal center lymphomas, and on cells from patients with chronic myelocytic leukemia (CML). It is also expressed on the surface of normal early lymphoid progenitor cells, immature B cells within adult bone marrow and germinal center B cells within lymphoid tissue. CD10 is also present on breast myoepithelial cells, bile canaliculi, fibroblasts, with especially high expression on the brush border of kidney and gut epithelial cells.

Limitations and Warranty

This antibody is available for research use only and is not approved for use in diagnosis. There are no warranties, expressed or implied, which extend beyond this description. Company is not liable for any personal injury or economic loss resulting from this product.

Supplied As

200ug/ml of Ab Purified from Bioreactor Concentrate by Protein A/G. Prepared in 10mM PBS with 0.05% BSA & 0.05% azide. Also available WITHOUT BSA & azide at 1.0mg/ml.

Storage and Stability

Antibody with azide - store at 2 to 8°C. Antibody without azide - store at -20 to -80°C. Antibody is stable for 24 months. Non-hazardous. No MSDS required.

Research Areas

B Cell Markers, Cardiovascular, Hematopoietic Stem Cells, Immunology