

Recombinant Mammaglobin (SCGB2A2) (Breast Cancer Marker) Antibody

Mouse Monoclonal Antibody [Clone rMGB/4229]

Catalog No	Format	Size
4250-MSM9-P0	Purified Ab with BSA and Azide at 200ug/ml	20 ug
4250-MSM9-P1	Purified Ab with BSA and Azide at 200ug/ml	100 ug
4250-MSM9-P1ABX	Purified Ab WITHOUT BSA and Azide at 1.0mg/ml	100 ug

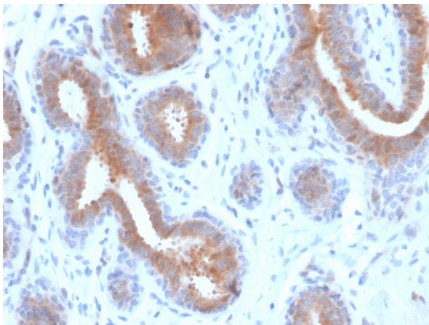
Applications	Tested Dillution	Note
Immunohistochemistry (IHC)	1-2ug/ml	30 min at RT. Staining of formalin-fixed tissues requires heating tissue sections in 10mM Tris with 1mM EDTA, pH 9.0, for 45 min at 95°C followed by cooling at RT for 20 minutes
Western Blot (WB)	2-4ug/ml	

Product Details

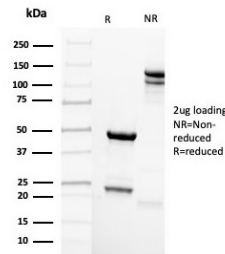
Clone	rMGB/4229
Gene Name	SCGB2A2
Immunogen	Stable CHO cell line producing antibody against Mammaglobin.
Host	Mouse
Clonality	Monoclonal
Isotype / Light Chain	IgG2a / Kappa
Mol. Weight of Antigen	18kDa
Cellular Localization	Secreted
Species Reactivity	Human
Positive Control	HeLa, MCF-7 or T47D cells. Human breast carcinoma. Skin

*Optimal dilution for a specific application should be determined.

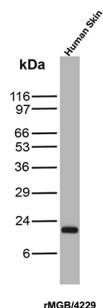
Product Images for Recombinant Mammaglobin (SCGB2A2) (Breast Cancer Marker) Antibody



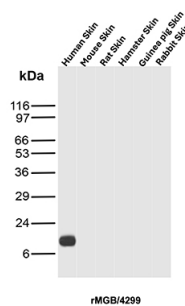
Formalin-fixed, paraffin-embedded human breast carcinoma stained with Mammaglobin Recombinant Mouse Monoclonal Antibody (rMGB/4229).



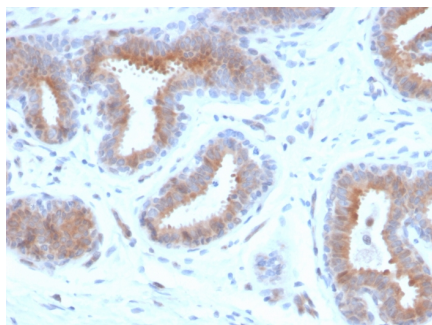
SDS-PAGE Analysis of Purified Mammaglobin Mouse Monoclonal Antibody (rMGB/4229). Confirmation of Integrity and Purity of Antibody.



Western Blot Analysis of Human Skin tissue lysate using Mammaglobin Recombinant Mouse Monoclonal Antibody (rMGB/4229).



Western Blot Analysis of Skin tissue lysates of different species using Mammaglobin Recombinant Mouse Monoclonal Antibody (rMGB/4229).



Formalin-fixed, paraffin-embedded human breast carcinoma stained with Mammaglobin Recombinant Mouse Monoclonal Antibody (rMGB/4229).

Specificity & Comments

Mammaglobin is a 93 amino acid glycoprotein with homology to other secretoglobin-uteroglobin family members. It was originally identified as a breast cancer restricted biomarker by differential screening. Mammaglobin related to secretoglobin family that includes human uteroglobin and lipophilin. Mammaglobin antibody stains cytoplasm of normal breast epithelial cells as well as primary and metastatic breast carcinomas. Mammaglobin expression is absent in prostate, kidney, colon, rectum, small intestine, stomach, pancreas, lung, and thyroid tissues. Mammaglobin may be used as part of an immunohistochemical panel for determination of metastatic breast carcinoma and tumor of unknown primary origin.

Limitations and Warranty

This antibody is available for research use only and is not approved for use in diagnosis. There are no warranties, expressed or implied, which extend beyond this description. Company is not liable for any personal injury or economic loss resulting from this product.

Supplied As

200ug/ml of Ab produced in the CHO cell mammalian-based expression system. Prepared in 10mM PBS with 0.05% BSA & 0.05% azide. Also available WITHOUT BSA & azide at 1.0mg/ml.

Storage and Stability

Antibody with azide - store at 2 to 8 °C. Antibody without azide - store at -20 to -80 °C. Antibody is stable for 24 months. Non-hazardous. No MSDS required.