

## Mammaglobin (SCGB2A2) (Breast Cancer Marker) Antibody

Mouse Monoclonal Antibody [Clone MGB/2000]

Catalog No	Format	Size
4250-MSM1-P0	Purified Ab with BSA and Azide at 200ug/ml	20 ug
4250-MSM1-P1	Purified Ab with BSA and Azide at 200ug/ml	100 ug
4250-MSM1-P1ABX	Purified Ab WITHOUT BSA and Azide at 1.0mg/ml	100 ug

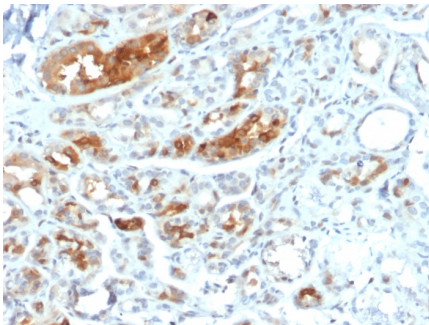
Applications	Tested Dillution	Note
Immunohistochemistry (IHC)	1-2ug/ml	30 min at RT. Staining of formalin-fixed tissues requires heating tissue sections in 10mM Tris with 1mM EDTA, pH 9.0, for 45 min at 95°C followed by cooling at RT for 20 minutes
Western Blot (WB)	2-4ug/ml	

### Product Details

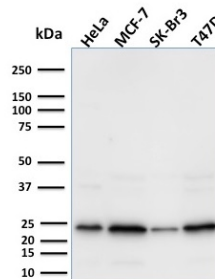
<b>Clone</b>	MGB/2000
<b>Gene Name</b>	SCGB2A2
<b>Immunogen</b>	Recombinant full-length human Mammaglobin (SCGB2A2) protein
<b>Host</b>	Mouse
<b>Clonality</b>	Monoclonal
<b>Isotype / Light Chain</b>	IgG1 / Kappa
<b>Mol. Weight of Antigen</b>	18-25kDa
<b>Cellular Localization</b>	Secreted
<b>Species Reactivity</b>	Human
<b>Positive Control</b>	HeLa, MCF-7 or T47D cells. SK-BR-3, Daudi, Human breast carcinoma.

\*Optimal dilution for a specific application should be determined.

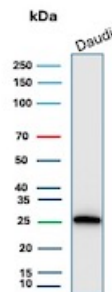
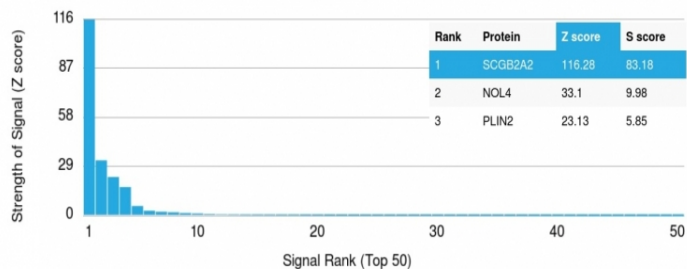
### Product Images for Mammaglobin (SCGB2A2) (Breast Cancer Marker) Antibody



Formalin-fixed, paraffin-embedded human breast carcinoma stained with Mammaglobin-Monospecific Mouse Monoclonal Antibody (MGB/2000).

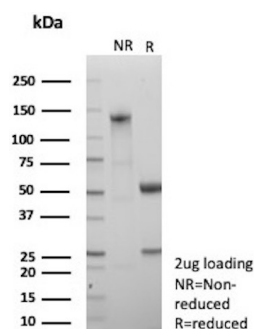


Western Blot Analysis of HeLa, MCF-7, Sk-Br3 & T47D cell lysates using Mouse Mammaglobin-Monospecific Monoclonal Antibody (MGB/2000).

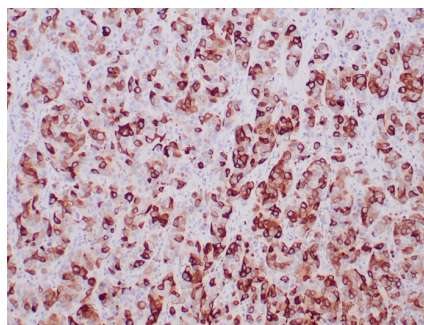


Western Blot Analysis of Daudi cell lysate using Mammaglobin Mouse Monoclonal Antibody (MGB/2000).

Analysis of Protein Array containing >19,000 full-length human proteins using Mammaglobin-Monospecific (SCGB2A2) Mouse Monoclonal Antibody (MGB/2000) Z- and S- Score: The Z-score represents the strength of a signal that a monoclonal antibody (MAb) (in combination with a fluorescently-tagged anti-IgG secondary antibody) produces when binding to a particular protein on the HuProt™ array. Z-scores are described in units of standard deviations (SD's) above the mean value of all signals generated on that array. If targets on HuProt™ are arranged in descending order of the Z-score, the S-score is the difference (also in units of SD's) between the Z-score. S-score therefore represents the relative target specificity of a MAb to its intended target. A MAb is considered to specific to its intended target, if the MAb has an S-score of at least 2.5. For example, if a MAb binds to protein X with a Z-score of 43 and to protein Y with a Z-score of 14, then the S-score for the binding of that MAb to protein X is equal to 29.



SDS-PAGE Analysis of Purified Mammaglobin Mouse Monoclonal Antibody (MGB/2000). Confirmation of Purity and Integrity of Antibody.



Formalin-fixed, paraffin-embedded human breast adenocarcinoma stained with Mammaglobin-Monospecific Mouse Monoclonal Antibody (MGB/2000).

## Specificity & Comments

Mammaglobin is a 93 amino acid glycoprotein with homology to other secretoglobin-uteroglobin family members. It was originally identified as a breast cancer restricted biomarker by differential screening. Mammaglobin related to secretoglobin family that includes human uteroglobin and lipophilin. Mammaglobin antibody stains cytoplasm of normal breast epithelial cells as well as primary and metastatic breast carcinomas. Mammaglobin expression is absent in prostate, kidney, colon, rectum, small intestine, stomach, pancreas, lung, and thyroid tissues. Mammaglobin may be used as part of an immunohistochemical panel for determination of metastatic breast carcinoma and tumor of unknown primary origin.

## Limitations and Warranty

This antibody is available for research use only and is not approved for use in diagnosis. There are no warranties, expressed or implied, which extend beyond this description. Company is not liable for any personal injury or economic loss resulting from this product.

## Supplied As

200ug/ml of Ab purified from Bioreactor Concentrate by Protein A/G. Prepared in 10mM PBS with 0.05% BSA & 0.05% azide. Also available WITHOUT BSA & azide at 1.0mg/ml.

## Storage and Stability

Antibody with azide - store at 2 to 8 °C. Antibody without azide - store at -20 to -80 °C. Antibody is stable for 24 months. Non-hazardous. No MSDS required.