

CD46 (Membrane Cofactor Protein) Antibody

Mouse Monoclonal Antibody [Clone 169-1-E4.3]

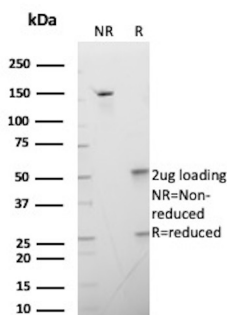
Catalog No	Format	Size
4179-MSM2-P0	Purified Ab with BSA and Azide at 200ug/ml	20 ug
4179-MSM2-P1	Purified Ab with BSA and Azide at 200ug/ml	100 ug
4179-MSM2-P1ABX	Purified Ab WITHOUT BSA and Azide at 1.0mg/ml	100 ug

Applications	Tested Dillution	Note
Flow Cytometry (Flow)	1-2ug/million cells	
Immunofluorescence (IF)	1-3ug/ml	

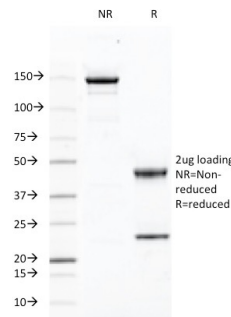
Product Details	
Clone	169-1-E4.3
Gene Name	CD46
Immunogen	Stimulated human leukocytes
Host	Mouse
Clonality	Monoclonal
Isotype / Light Chain	IgG2a / Kappa
Mol. Weight of Antigen	52-58kDa
Cellular Localization	Acrosome inner membrane, Cytoplasmic vesicle, Secretory vesicle
Species Reactivity	Baboon, Human
Positive Control	HeLa and Jurkat cells and human lymphocytes. Lymph node and tonsil., HL60, K562, U937

*Optimal dilution for a specific application should be determined.

Product Images for CD46 (Membrane Cofactor Protein) Antibody



SDS-PAGE Analysis of Purified CD46 Mouse Monoclonal Antibody (169-1-E4.3). Confirmation of Integrity and Purity of Antibody



SDS-PAGE Analysis of Purified CD46 Mouse Monoclonal Antibody (169-1-E4.3). Confirmation of Integrity and Purity of Antibody

Specificity & Comments

Recognizes a protein of 52kDa-58kDa, identified as CD46 (also known as membrane cofactor protein, MCP). Its epitope is located on the four immunogenic short consensus repeat (SCR) domains at N-terminus of the protein. CD46 exists as many isoforms in a variety of tissues. It is strongly expressed on salivary gland ducts and kidney ducts, moderately on lymphocytes and endothelium, and weakly on interstitial tissues and muscle cells, but not on erythrocytes. CD46 functions as a C3b/C4b-binding glycoprotein that inhibits complement activation on host cells. It also serves as a measles virus receptor, an adherence factor for group Streptococcus pyogenes, and a cellular pilus receptor for pathogenic Neisseria.

Supplied As

200ug/ml of Ab Purified from Bioreactor Concentrate. Prepared in 10mM PBS with 0.05% BSA & 0.05% azide. Also available WITHOUT BSA & azide at 1.0mg/ml.

Storage and Stability

Antibody with azide - store at 2 to 8°C. Antibody without azide - store at -20 to -80°C. Antibody is stable for 24 months. Non-hazardous. No MSDS required.

Research Areas

Complement System, Endothelial Cell Marker, Immunology

Limitations and Warranty

This antibody is available for research use only and is not approved for use in diagnosis. There are no warranties, expressed or implied, which extend beyond this description. Company is not liable for any personal injury or economic loss resulting from this product.
