

MCM6 (Proliferation Marker) Antibody

Mouse Monoclonal Antibody [Clone MCM6/2999]

Catalog No	Format	Size
4175-MSM1-P0	Purified Ab with BSA and Azide at 200ug/ml	20 ug
4175-MSM1-P1	Purified Ab with BSA and Azide at 200ug/ml	100 ug
4175-MSM1-P1ABX	Purified Ab WITHOUT BSA and Azide at 1.0mg/ml	100 ug

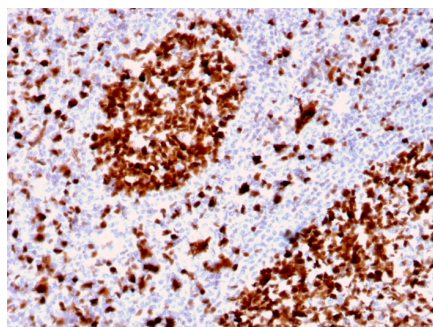
Applications	Tested Dillution	Note
Immunohistochemistry (IHC)	1-2ug/ml	30 min at RT. Staining of formalin-fixed tissues requires heating tissue sections in 10mM Tris with 1mM EDTA, pH 9.0, for 45 min at 95°C followed by cooling at RT for 20 minutes
Western Blot (WB)	2-4ug/ml	

Product Details

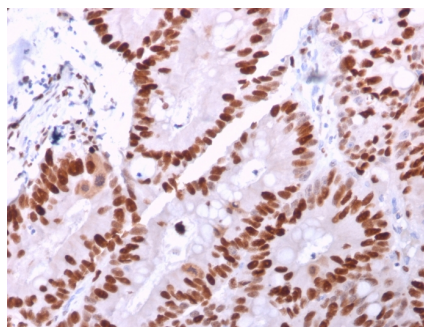
Clone	MCM6/2999
Gene Name	MCM6
Immunogen	Recombinant fragment (around aa 228-368) of human MCM6 protein (exact sequence is proprietary)
Host	Mouse
Clonality	Monoclonal
Isotype / Light Chain	IgG2b / Kappa
Mol. Weight of Antigen	105kDa
Cellular Localization	Chromosome, Nucleus
Species Reactivity	Guinea Pig, Hamster, Human, Rat
Positive Control	A-431, Human skin or squamous cell carcinoma (IHC). Human Kidney, Mouse Kidney, Rat Kidney, Hamster Kidney or Guinea pig Kidney

**Optimal dilution for a specific application should be determined.*

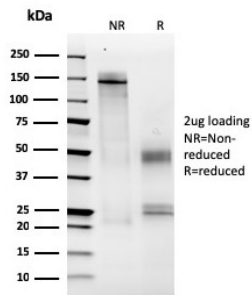
Product Images for MCM6 (Proliferation Marker) Antibody



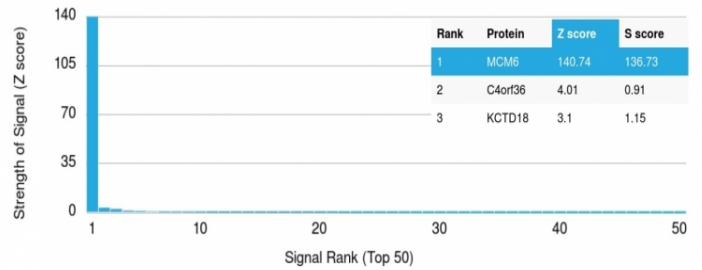
Formalin-fixed, paraffin-embedded human Tonsil stained with MCM6 Mouse Monoclonal Antibody (MCM6/2999).



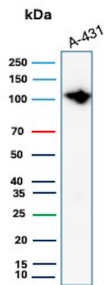
Formalin-fixed, paraffin-embedded human Colon Carcinoma stained with MCM6 Mouse Monoclonal Antibody (MCM6/2999).



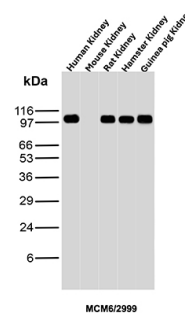
SDS-PAGE Analysis Purified MCM6 Mouse Monoclonal Antibody (MCM6/2999). Confirmation of Integrity and Purity of Antibody.



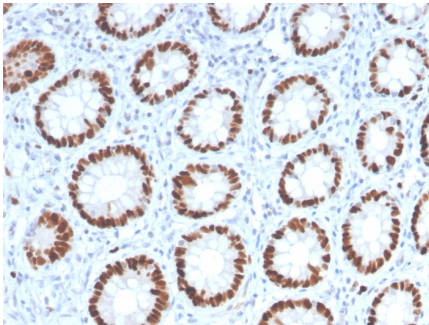
Analysis of Protein Array containing >19,000 full-length human proteins using MCM6 Mouse Monoclonal Antibody (MCM6/2999) Z- and S- Score: The Z-score represents the strength of a signal that a monoclonal antibody (MAB) (in combination with a fluorescently-tagged anti-IgG secondary antibody) produces when binding to a particular protein on the HuProt™ array. Z-scores are described in units of standard deviations (SD's) above the mean value of all signals generated on that array. If targets on HuProt™ are arranged in descending order of the Z-score, the S-score is the difference (also in units of SD's) between the Z-score. S-score therefore represents the relative target specificity of a MAB to its intended target. A MAB is considered to specific to its intended target, if the MAB has an S-score of at least 2.5. For example, if a MAB binds to protein X with a Z-score of 43 and to protein Y with a Z-score of 14, then the S-score for the binding of that MAB to protein X is equal to 29.



Western Blot Analysis of A-431 lysate using MCM6 Mouse Monoclonal Antibody (MCM6/2999).



Western blot analysis of Human Kidney, Mouse Kidney, Rat Kidney, Hamster Kidney and Guinea pig Kidney tissue lysates using MCM6 Mouse Monoclonal Antibody (MCM6/2999).



Formalin-fixed, paraffin-embedded human Colon stained with MCM6 Mouse Monoclonal Antibody (MCM6/2999).

Specificity & Comments

The mini-chromosome maintenance (MCM) family of proteins, including MCM2, MCM3, MCM6 (Cdc21), MCM5 (Cdc46), MCM6 (Mis5) and MCM7 (Cdc47), are regulators of DNA replication that act to ensure replication occurs only once in the cell cycle. Expression of MCM proteins increases during cell growth, peaking at G1/S phase. The MCM proteins each contain an ATP-binding motif, which is predicted to mediate ATP-dependent opening of double-stranded DNA. MCM proteins are regulated by E2F transcription factors, which induce MCM expression, and by protein kinases, which interact with MCM proteins to maintain the post-replicative state of the cell. MCM2/MCM6 complexes function as substrates for Cdc2/cyclin B in vitro.

Limitations and Warranty

This antibody is available for research use only and is not approved for use in diagnosis. There are no warranties, expressed or implied, which extend beyond this description. Company is not liable for any personal injury or economic loss resulting from this product.

Supplied As

200ug/ml of Ab Purified from Bioreactor Concentrate by Protein A/G. Prepared in 10mM PBS with 0.05% BSA & 0.05% azide. Also available WITHOUT BSA & azide at 1.0mg/ml.

Storage and Stability

Antibody with azide - store at 2 to 8°C. Antibody without azide - store at -20 to -80°C. Antibody is stable for 24 months. Non-hazardous. No MSDS required.

Research Areas

Nuclear Marker
