

## MCAM (Melanoma Cell Adhesion Molecule) / MUC18 / CD146 Antibody

Mouse Monoclonal Antibody [Clone MCAM/1101]

| Catalog No      | Format  | Size   |
|-----------------|---|--------|
| 4162-MSM2-P0    | Purified Ab with BSA and Azide at 200ug/ml    | 20 ug  |
| 4162-MSM2-P1    | Purified Ab with BSA and Azide at 200ug/ml    | 100 ug |
| 4162-MSM2-P1ABX | Purified Ab WITHOUT BSA and Azide at 1.0mg/ml | 100 ug |

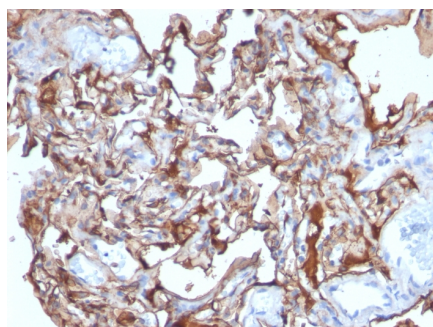
| Applications               | Tested Dillution    | Note  |
|----------------------------|---------------------|---|
| Flow Cytometry (Flow)      | 1-2ug/million cells |   |
| Immunofluorescence (IF)    | 1-3ug/ml            |   |
| Immunohistochemistry (IHC) | 1-2ug/ml            | 30 min at RT. Staining of formalin-fixed tissues requires heating tissue sections in 10mM Tris with 1mM EDTA, pH 9.0, for 45 min at 95°C followed by cooling at RT for 20 minutes |

### Product Details

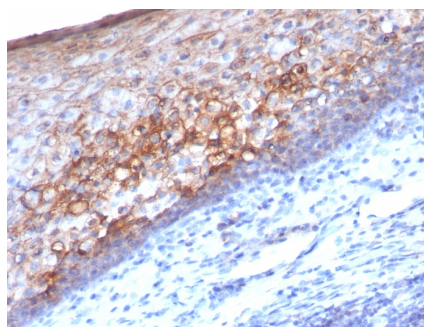
|                        |  |
|------------------------|--|
| Clone                  | MCAM/1101  |
| Gene Name              | MCAM   |
| Immunogen              | Recombinant human MCAM protein                         |
| Host                   | Mouse  |
| Clonality              | Monoclonal   |
| Isotype / Light Chain  | IgG1 / Kappa   |
| Mol. Weight of Antigen | 130kDa   |
| Cellular Localization  | Membrane   |
| Species Reactivity     | Human  |
| Positive Control       | A-375, HUV-EC or HeLa cells. Tonsil or Melanoma (IHC). |

*\*Optimal dilution for a specific application should be determined.*

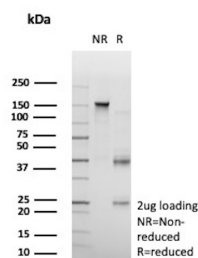
### Product Images for MCAM (Melanoma Cell Adhesion Molecule) / MUC18 / CD146 Antibody



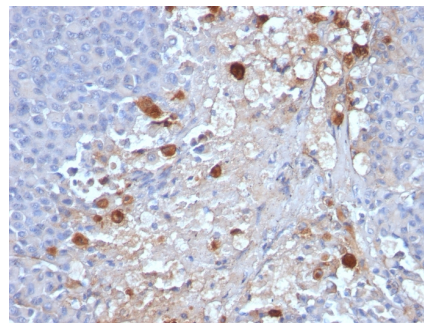
Formalin-fixed, paraffin-embedded human Melanoma stained with MCAM Mouse Monoclonal Antibody (MCAM/1101).



Formalin-fixed, paraffin-embedded human Tonsil stained with MCAM Mouse Monoclonal Antibody (MCAM/1101).



SDS-PAGE Analysis of Purified CD146 Mouse Monoclonal Antibody (MCAM/1101). Confirmation of Integrity and Purity of Antibody



Formalin-fixed, paraffin-embedded human Melanoma stained with MCAM Mouse Monoclonal Antibody (MCAM/1101).

### Specificity & Comments

The human Mel-CAM gene maps to chromosome 11q23 and encodes a trans-membrane glycoprotein, also designated MCAM, MUC 18 or CD146, that belongs to the immunoglobulin superfamily and functions as a Ca<sup>2+</sup>-independent cell adhesion molecule. Mel-CAM expression is restricted to advanced primary and metastatic melanomas and to cell lines of the neuroectodermal lineage, but not normal melanocytes. Mel-CAM is found on 80% of advanced primary human melanomas and correlates well with development of metastatic disease.

### Supplied As

200ug/ml of Ab Purified from Bioreactor Concentrate by Protein A/G. Prepared in 10mM PBS with 0.05% BSA & 0.05% azide. Also available WITHOUT BSA & azide at 1.0mg/ml.

### Storage and Stability

Antibody with azide - store at 2 to 8°C. Antibody without azide - store at -20 to -80°C. Antibody is stable for 24 months. Non-hazardous. No MSDS required.

### Research Areas

Endothelial Cell Marker, Mesenchymal Stem Cell Differentiation, Signal Transduction

### Limitations and Warranty

This antibody is available for research use only and is not approved for use in diagnosis. There are no warranties, expressed or implied, which extend beyond this description. Company is not liable for any personal injury or economic loss resulting from this product.