

Recombinant Myoglobin (Muscle Cell Marker) Antibody

Mouse Monoclonal Antibody [Clone rMB/2105]

Catalog No	Format	Size
4151-MSM2-P0	Purified Ab with BSA and Azide at 200ug/ml	20 ug
4151-MSM2-P1	Purified Ab with BSA and Azide at 200ug/ml	100 ug
4151-MSM2-P1ABX	Purified Ab WITHOUT BSA and Azide at 1.0mg/ml	100 ug

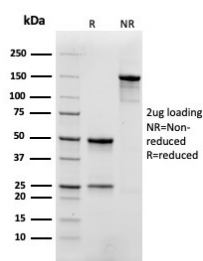
Applications	Tested Dillution	Note
Immunohistochemistry (IHC)	1-2ug/ml	30 min at RT. Staining of formalin-fixed tissues requires heating tissue sections in 10mM Tris with 1mM EDTA, pH 9.0, for 45 min at 95°C followed by cooling at RT for 20 minutes
Western Blot (WB)	2-4ug/ml	

Product Details

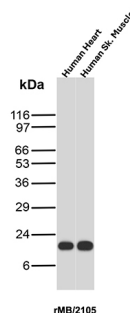
Clone	rMB/2105
Gene Name	MB
Immunogen	Recombinant human full-length Myoglobin (MB) protein.
Host	Mouse
Clonality	Monoclonal
Isotype / Light Chain	IgG1 / Kappa
Mol. Weight of Antigen	17kDa
Species Reactivity	Human, Mouse, Rat
Positive Control	SK-BR3 or T47D cells. Skeletal or Cardiac Muscle.

**Optimal dilution for a specific application should be determined.*

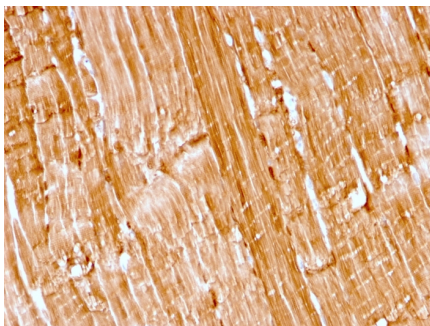
Product Images for Recombinant Myoglobin (Muscle Cell Marker) Antibody



SDS-PAGE Analysis. Purified Myoglobin Recombinant Mouse Monoclonal Antibody (rMB/2105). Confirmation of Purity and Integrity of Antibody.



Western Blot Analysis of Human Heart and Human Skeletal muscle tissue lysates using Myoglobin Recombinant Mouse Monoclonal Antibody (rMB/2105).



Formalin-fixed, paraffin-embedded human skeletal muscle stained with Myoglobin Recombinant Mouse Monoclonal Antibody (rMB/2105).

Specificity & Comments

Myoglobin is a cytosolic oxygen-binding protein responsible for the storage and diffusion of oxygen within myocytes. Expression of myoglobin is highest in skeletal and cardiac muscle. Myoglobin is well accepted as an O₂-storage protein in muscle, capable of releasing O₂ during periods of hypoxia or anoxia. In combination with other striated muscle markers such as vimentin and myogenin, myoglobin is helpful in the identification of rhabdomyosarcoma and tumors with skeletal muscle differentiation. Reportedly, myoglobin is expressed on epithelial cancer cells due to changed metabolic and environmental conditions.

Supplied As

200ug/ml of Ab Purified from Bioreactor Concentrate by Protein A/G. Prepared in 10mM PBS with 0.05% BSA & 0.05% azide. Also available WITHOUT BSA & azide at 1.0mg/ml.

Storage and Stability

Antibody with azide - store at 2 to 8°C. Antibody without azide - store at -20 to -80°C. Antibody is stable for 24 months. Non-hazardous. No MSDS required.

Research Areas

Cardiovascular

Limitations and Warranty

This antibody is available for research use only and is not approved for use in diagnosis. There are no warranties, expressed or implied, which extend beyond this description. Company is not liable for any personal injury or economic loss resulting from this product.
