

Melanoma Antigen Family A, 4 / MAGEA4 Antibody

Mouse Monoclonal Antibody [Clone CPTC-MAGEA4-1]

Catalog No	Format	Size
4103-MSM1-P0	Purified Ab with BSA and Azide at 200ug/ml	20 ug
4103-MSM1-P1	Purified Ab with BSA and Azide at 200ug/ml	100 ug
4103-MSM1-P1ABX	Purified Ab WITHOUT BSA and Azide at 1.0mg/ml	100 ug

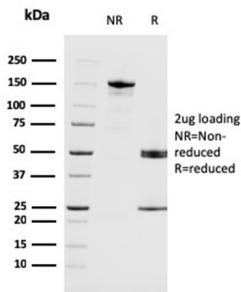
Applications	Tested Dillution	Note
Immunohistochemistry (IHC)	1-2ug/ml	30 min at RT. Staining of formalin-fixed tissues requires heating tissue sections in 10mM Tris with 1mM EDTA, pH 9.0, for 45 min at 95°C followed by cooling at RT for 20 minutes

Product Details

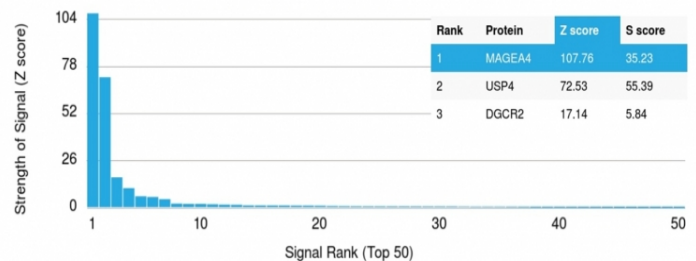
Clone	CPTC-MAGEA4-1
Gene Name	MAGEA4
Immunogen	Recombinant full-length human MAGEA4 protein
Host	Mouse
Clonality	Monoclonal
Isotype / Light Chain	IgG2c / Kappa
Mol. Weight of Antigen	45-50kDa
Species Reactivity	Human
Positive Control	HepG2 cell lysate; melanoma, testes and placenta.

*Optimal dilution for a specific application should be determined.

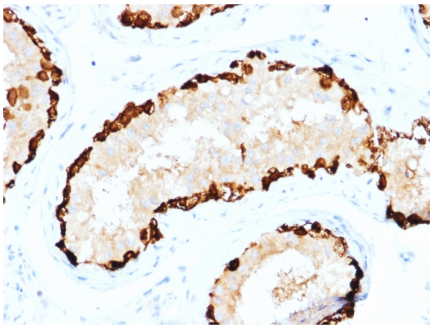
Product Images for Melanoma Antigen Family A, 4 / MAGEA4 Antibody



SDS-PAGE Analysis of Purified MAGEA4 Mouse Monoclonal Antibody (CPTC-MAGEA4-1). Confirmation of Purity and Integrity of Antibody.



Analysis of Protein Array containing more than 19,000 full-length human proteins using MAGEA4 Mouse Monoclonal Antibody (CPTC-MAGEA4-1). Z- and S- Score: The Z-score represents the strength of a signal that a monoclonal antibody (Monoclonal Antibody) (in combination with a fluorescently-tagged anti-IgG secondary antibody) produces when binding to a particular protein on the HuProt™ array. Z-scores are described in units of standard deviations (SD's) above the mean value of all signals generated on that array. If targets on HuProt™ are arranged in descending order of the Z-score, the S-score is the difference (also in units of SD's) between the Z-score. S-score therefore represents the relative target specificity of a Monoclonal Antibody to its intended target. A Monoclonal Antibody is considered to be specific to its intended target, if the Monoclonal Antibody has an S-score of at least 2.5. For example, if a Monoclonal Antibody binds to protein X with a Z-score of 43 and to protein Y with a Z-score of 14, then the S-score for the binding of that Monoclonal Antibody to protein X is equal to 29.



Formalin-fixed, paraffin-embedded human Testis stained with MAGEA4 Mouse Monoclonal Antibody (CPTC-MAGEA4-1).

Specificity & Comments

The melanoma-associated antigen (MAGE) family consists of a number of antigens recognized by cytotoxic T lymphocytes. The MAGE genes were initially isolated from different kinds of tumors, and based on their virtually exclusive tumor-specific expression in adult tissues, they have been used as targets for cancer immunotherapy. MAGE genes encode for tumor-rejection antigens and are expressed in tumors of different histologic types, but not in normal tissues, with the exception of testis and placenta.

Supplied As

200ug/ml of Ab Purified from Bioreactor Concentrate by Protein A/G. Prepared in 10mM PBS with 0.05% BSA & 0.05% azide. Also available WITHOUT BSA & azide at 1.0mg/ml.

Storage and Stability

Antibody with azide - store at 2 to 8°C. Antibody without azide - store at -20 to -80°C. Antibody is stable for 24 months. Non-hazardous. No MSDS required.

Research Areas

Immuno Oncology, Nuclear Marker

Limitations and Warranty

This antibody is available for research use only and is not approved for use in diagnosis. There are no warranties, expressed or implied, which extend beyond this description. Company is not liable for any personal injury or economic loss resulting from this product.
