

## SMAD4 (Pancreatic Adenocarcinoma Marker) Antibody

Mouse Monoclonal Antibody [Clone SMAD4/2524]

Catalog No	Format	Size
4089-MSM2-P0	Purified Ab with BSA and Azide at 200ug/ml	20 ug
4089-MSM2-P1	Purified Ab with BSA and Azide at 200ug/ml	100 ug
4089-MSM2-P1ABX	Purified Ab WITHOUT BSA and Azide at 1.0mg/ml	100 ug

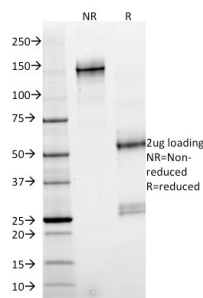
Applications	Tested Dillution	Note
--------------	------------------	------

### Product Details

<b>Clone</b>	SMAD4/2524
<b>Gene Name</b>	SMAD4
<b>Immunogen</b>	Recombinant full-length human STAT6 protein
<b>Host</b>	Mouse
<b>Clonality</b>	Monoclonal
<b>Isotype / Light Chain</b>	IgG2a / Kappa
<b>Mol. Weight of Antigen</b>	61kDa
<b>Cellular Localization</b>	Cytoplasm, Nucleus
<b>Species Reactivity</b>	Human
<b>Positive Control</b>	Jurkat or A431 cells. Pancreatic Carcinoma

\*Optimal dilution for a specific application should be determined.

### Product Images for SMAD4 (Pancreatic Adenocarcinoma Marker) Antibody



SDS-PAGE Analysis of Purified SMAD4 Mouse Monoclonal Antibody (SMAD4/2524). Confirmation of Purity and Integrity of Antibody.

### Specificity & Comments

Signaling from the ligand-activated membrane receptor serine/threonine kinases to nuclear targets is mediated by a set of evolutionarily conserved proteins known as DPC4. Upon ligand binding, the receptors of the TGF- $\beta$  family phosphorylate SMAD proteins (SMAD1 and SMAD2). These proteins then move into the nucleus, where they activate transcription. To carry out this function, the receptor activated SMAD1 and 2 require association with the product of deleted in pancreatic carcinoma, locus 4 (DPC4), also known as SMAD4. SMAD4/DPC4 is also implicated as a tumor suppressor, since it is inactivated in more than half of pancreatic carcinomas and to a lesser extent in a variety of other cancers. SMAD4 is absent in approximately 80% of pancreatic adenocarcinoma, but rarely in endometrial, colorectal, ovarian, lung, breast adenocarcinomas, and malignant melanom. SMAD4 is an important marker for confirming a diagnosis of pancreatic adenocarcinoma. Patients with pancreatic adenocarcinomas with SMAD4 protein expression had significantly longer survival than SMAD4 negative patients.

### Supplied As

200ug/ml of Ab purified from Bioreactor Concentrate by Protein A/G. Prepared in 10mM PBS with 0.05% BSA & 0.05% azide. Also available WITHOUT BSA & azide at 1.0mg/ml.

### Storage and Stability

Antibody with azide - store at 2 to 8 °C. Antibody without azide - store at -20 to -80 °C. Antibody is stable for 24 months. Non-hazardous. No MSDS required.

### Research Areas

Cardiovascular, Colon Cancer, Developmental Biology, Infectious Disease, Neuroinflammation, Nuclear Marker, Signal Transduction, Transcription Factors

## Limitations and Warranty

This antibody is available for research use only and is not approved for use in diagnosis. There are no warranties, expressed or implied, which extend beyond this description. Company is not liable for any personal injury or economic loss resulting from this product.

---