

EpCAM / CD326 (Epithelial Marker) Antibody

| Catalog No | Format | Size |
|------------------|---|--------|
| 4072-RBP17-P0 | Purified Ab with BSA and Azide at 200ug/ml | 20 ug |
| 4072-RBP17-P1 | Purified Ab with BSA and Azide at 200ug/ml | 100 ug |
| 4072-RBP17-P1ABX | Purified Ab WITHOUT BSA and Azide at 1.0mg/ml | 100 ug |

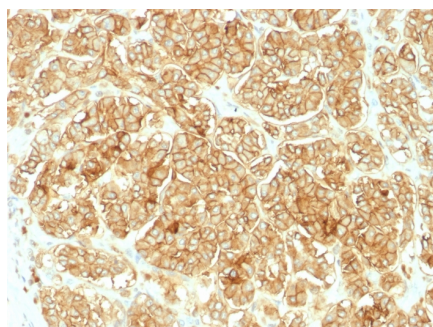
| Applications | Tested Dillution | Note |
|-------------------------|---------------------|------|
| Flow Cytometry (Flow) | 1-2ug/million cells | |
| Immunofluorescence (IF) | 1-3ug/ml | |
| Western Blot (WB) | 2-4ug/ml | |

Product Details

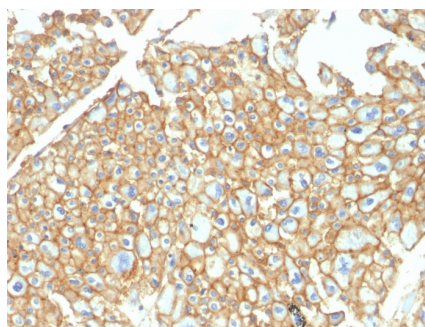
| | |
|-------------------------------|--|
| Gene Name | EPCAM |
| Immunogen | Recombinant human TACSTD1 protein |
| Host | Rabbit |
| Clonality | Polyclonal |
| Isotype / Light Chain | IgG / Kappa |
| Mol. Weight of Antigen | 40-43kDa |
| Cellular Localization | Cell junction, Lateral cell membrane, Tight junction |
| Species Reactivity | Human |
| Positive Control | HT29 cells or breast tumor |

**Optimal dilution for a specific application should be determined.*

Product Images for EpCAM / CD326 (Epithelial Marker) Antibody



Formalin-fixed, paraffin-embedded human Renal Cell Carcinoma stained with EpCAM Rabbit Polyclonal Antibody.



Formalin-fixed, paraffin-embedded human Renal Cell Carcinoma stained with EpCAM Rabbit Polyclonal Antibody.

Specificity & Comments

EGP40 is a 40-43kDa transmembrane epithelial glycoprotein, also identified as epithelial specific antigen (ESA), or epithelial cellular adhesion molecule (EpCAM). It is expressed on baso-lateral cell surface in most simple epithelia and a vast majority of carcinomas with the exception of adult squamous epithelium, hepatocytes and gastric epithelial cells. EpCAM antibody has been used to distinguish adenocarcinoma from pleural mesothelioma and hepatocellular carcinoma. EpCAM antibody is also useful in distinguishing serous carcinomas of the ovary from mesothelioma.

Supplied As

200ug/ml of Ab purified by Protein A. Prepared in 10mM PBS with 0.05% BSA & 0.05% azide. Also available WITHOUT BSA & azide at 1.0mg/ml.

Storage and Stability

Antibody with azide - store at 2 to 8 °C. Antibody without azide - store at -20 to -80 °C. Antibody is stable for 24 months. Non-hazardous. No MSDS required.

Research Areas

Stem Cell Differentiation

Limitations and Warranty

This antibody is available for research use only and is not approved for use in diagnosis. There are no warranties, expressed or implied, which extend beyond this description. Company is not liable for any personal injury or economic loss resulting from this product.
