

Recombinant EpCAM / CD326 (Epithelial Marker) Antibody

Rabbit Monoclonal Antibody [Clone EGP40/2041R]

Catalog No	Format	Size
4072-RBM21-P0	Purified Ab with BSA and Azide at 200ug/ml	20 ug
4072-RBM21-P1	Purified Ab with BSA and Azide at 200ug/ml	100 ug
4072-RBM21-P1ABX	Purified Ab WITHOUT BSA or Azide at 1.0mg/ml	100 ug

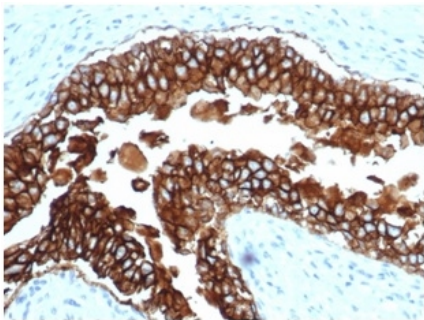
Applications	Tested Dillution	Note
Immunofluorescence (IF)	1-3ug/ml	
Immunohistochemistry (IHC)	1-2ug/ml	30 min at RT. Staining of formalin-fixed tissues requires heating tissue sections in 10mM Tris with 1mM EDTA, pH 9.0, for 45 min at 95°C followed by cooling at RT for 20 minutes
Western Blot (WB)	2-4ug/ml	

Product Details

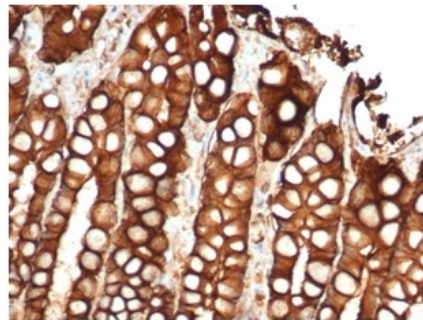
Clone	EGP40/2041R
Immunogen	Recombinant fragment (around aa100-224) of the human EpCAM protein (exact sequence is proprietary)
Host	Rabbit
Clonality	Monoclonal
Isotype / Light Chain	IgG / Kappa
Mol. Weight of Antigen	34.93kDa
Cellular Localization	Cell junction, Lateral cell membrane, Tight junction
Species Reactivity	Human
Positive Control	HT29 or MCF-7 cells. Human breast or ovarian carcinoma. Human Lung, Guinea pig Lung, Human Intestine, or Guinea pig Intestine. HEK293 cells. HCT116 cells.

*Optimal dilution for a specific application should be determined.

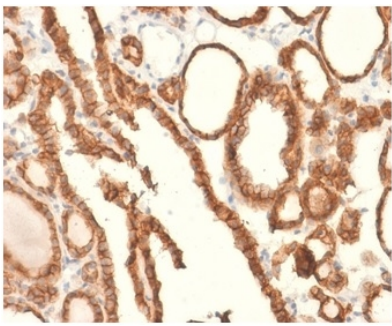
Product Images for Recombinant EpCAM / CD326 (Epithelial Marker) Antibody



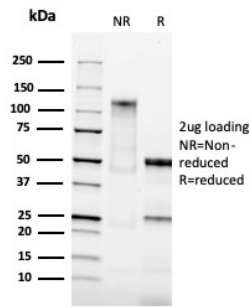
Formalin-fixed, paraffin-embedded canine (dog) bladder stained with EpCAM Recombinant Rabbit Monoclonal Antibody (EGP40/2041R).



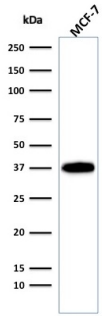
Formalin-fixed, paraffin-embedded feline (cat) small intestine stained with EpCAM Recombinant Rabbit Monoclonal Antibody (EGP40/2041R).



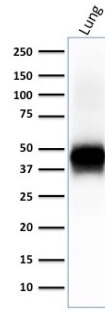
Formalin-fixed, paraffin-embedded human thyroid carcinoma stained with EpCAM Recombinant Rabbit Monoclonal Antibody (EGP40/2041R).



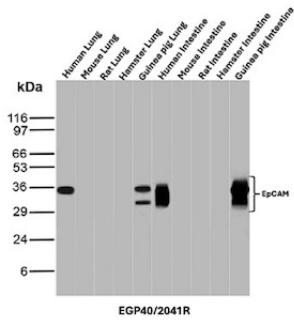
SDS-PAGE Analysis Purified EpCAM Recombinant Rabbit Monoclonal Antibody (EGP40/2041R). Confirmation of Purity and Integrity of Antibody.



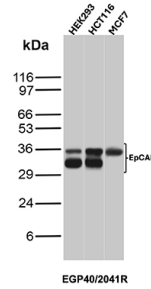
Western blot analysis of MCF-7 cell lysate using EpCAM Recombinant Rabbit Monoclonal Antibody (EGP40/2041R).



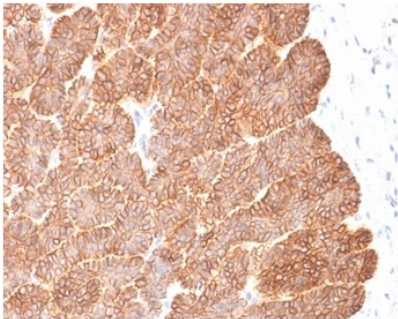
Western blot analysis of human lung tissue lysate using EpCAM Recombinant Rabbit Monoclonal Antibody (EGP40/2041R).



Western blot analysis of Human Lung, Mouse Lung, Rat Lung, Hamster Lung, Guinea pig Lung, Human Intestine, Mouse Intestine, Rat Intestine, Hamster Intestine and Guinea pig Intestine tissue lysates using EpCAM Recombinant Rabbit Monoclonal Antibody (EGP40/2041R).



Western blot analysis of HEK293, HCT116, and MCF7 cell lysates using EpCAM Recombinant Rabbit Monoclonal Antibody (EGP40/2041R).



Formalin-fixed, paraffin-embedded human basal cell carcinoma stained with EpCAM Recombinant Rabbit Monoclonal Antibody (EGP40/2041R).

Specificity & Comments

Epitope of this MAb is mapped between aa 202-212 of EGP40, which is a 40-43kDa transmembrane epithelial glycoprotein, also identified as epithelial specific antigen (ESA), or epithelial cellular adhesion molecule (Ep-CAM). It is expressed on baso-lateral cell surface in most simple epithelia and a vast majority of carcinomas. Antibody to Ep-CAM has been used to distinguish adenocarcinoma from pleural mesothelioma and hepatocellular carcinoma. This antibody is also useful in distinguishing serous carcinomas of the ovary from mesothelioma.

Limitations and Warranty

This antibody is available for research use only and is not approved for use in diagnosis. There are no warranties, expressed or implied, which extend beyond this description. Company is not liable for any personal injury or economic loss resulting from this product.

Supplied As

200ug/ml of Ab produced in a mammalian-based expression system. Prepared in 10mM PBS with 0.05% BSA & 0.05% azide. Also available WITHOUT BSA & azide at 1.0mg/ml.

Storage and Stability

Antibody with azide - store at 2 to 8 °C. Antibody without azide - store at -20 to -80 °C. Antibody is stable for 24 months. Non-hazardous. No MSDS required.
