

EpCAM / CD326 (Epithelial Marker) Antibody

Mouse Monoclonal Antibody [Clone Cocktail PAN-EpCAM]

Catalog No	Format	Size
4072-MSM9-P0	Purified Ab with BSA and Azide at 200ug/ml	20 ug
4072-MSM9-P1	Purified Ab with BSA and Azide at 200ug/ml	100 ug
4072-MSM9-P1ABX	Purified Ab WITHOUT BSA and Azide at 1.0mg/ml	100 ug

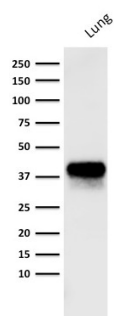
Applications	Tested Dillution	Note
Flow Cytometry (Flow)	1-2ug/million cells	
Immunofluorescence (IF)	1-3ug/ml	
Immunohistochemistry (IHC)	1-2ug/ml	30 min at RT. Staining of formalin-fixed tissues requires heating tissue sections in 10mM Tris with 1mM EDTA, pH 9.0, for 45 min at 95°C followed by cooling at RT for 20 minutes
Western Blot (WB)	2-4ug/ml	

Product Details

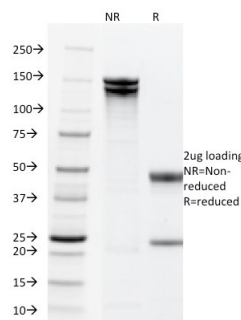
Clone	Cocktail PAN-EpCAM
Gene Name	EPCAM
Immunogen	Recombinant human EpCAM protein (full-length and fragments)
Host	Mouse
Clonality	Monoclonal
Isotype / Light Chain	IgG1 / Kappa
Mol. Weight of Antigen	40-43kDa
Cellular Localization	Cell junction, Lateral cell membrane, Tight junction
Species Reactivity	Human
Positive Control	MCF-7 or HT29 cells. Human breast tumor.

*Optimal dilution for a specific application should be determined.

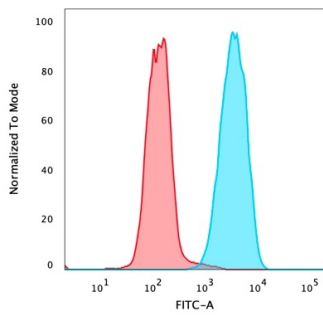
Product Images for EpCAM / CD326 (Epithelial Marker) Antibody



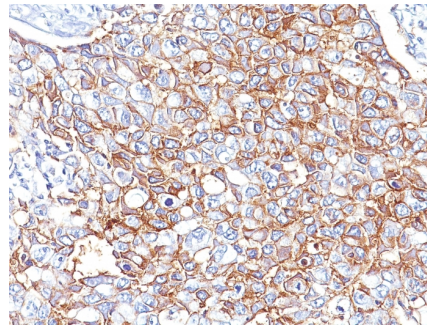
Western Blot analysis of human lung tissue lysate using EpCAM Mouse Monoclonal Antibody (PAN-EpCAM).



SDS-PAGE Analysis of Purified EpCAM Mouse Monoclonal Antibody (PAN-EpCAM). Confirmation of Integrity and Purity of Antibody



Flow Cytometric Analysis of PFA-fixed MCF-7 cells using EpCAM Mouse Monoclonal Antibody (PAN-EpCAM) followed by goat anti-mouse IgG-CF488 (blue); isotype control (red).



Formalin-fixed, paraffin-embedded human breast carcinoma stained with EpCAM Mouse Monoclonal Antibody (PAN-EpCAM).

Specificity & Comments

It is a cocktail of four highly specific monoclonal antibodies that recognize extracellular as well as intracellular domains of the epithelial cellular adhesion molecule (EpCAM). It is a 40-43kDa transmembrane epithelial glycoprotein, identified as epithelial specific antigen (ESA), or EpCAM. EpCAM is expressed on basolateral cell surface in most simple epithelia and a vast majority of carcinomas. This epithelial antigen plays an important role as a tumor-cell marker in lymph nodes from patients with esophageal carcinoma otherwise classified as node-negative. Epithelial antigen has also been suggested as a discriminator between basal cell and baso-squamous carcinomas, and squamous cell carcinoma of the skin.

Limitations and Warranty

This antibody is available for research use only and is not approved for use in diagnosis. There are no warranties, expressed or implied, which extend beyond this description. Company is not liable for any personal injury or economic loss resulting from this product.

Supplied As

200ug/ml of Abs purified from Bioreactor Concentrate by Protein A/G. Prepared in 10mM PBS with 0.05% BSA & 0.05% azide. Also available WITHOUT BSA & azide at 1.0mg/ml.

Storage and Stability

Antibody with azide - store at 2 to 8 °C. Antibody without azide - store at -20 to -80 °C. Antibody is stable for 24 months. Non-hazardous. No MSDS required.

Research Areas

Stem Cell Differentiation