

## Recombinant EpCAM / CD326 (Epithelial Marker) Antibody

Mouse Monoclonal Antibody [Clone rEGP40/4547]

Catalog No	Format	Size
4072-MSM27-P0	Purified Ab with BSA and Azide at 200ug/ml	20 ug
4072-MSM27-P1	Purified Ab with BSA and Azide at 200ug/ml	100 ug
4072-MSM27-P1ABX	Purified Ab WITHOUT BSA or Azide at 1.0mg/ml	100 ug

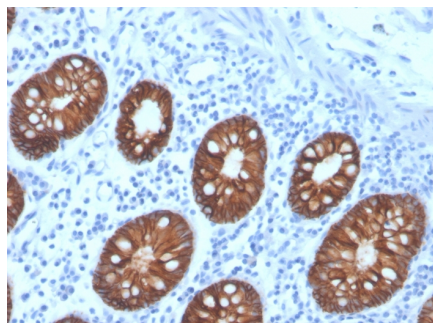
Applications	Tested Dillution	Note
Immunohistochemistry (IHC)	1-2ug/ml	30 min at RT. Staining of formalin-fixed tissues requires heating tissue sections in 10mM Tris with 1mM EDTA, pH 9.0, for 45 min at 95°C followed by cooling at RT for 20 minutes
Western Blot (WB)	2-4ug/ml	

### Product Details

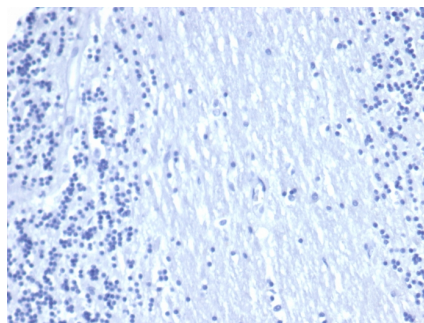
<b>Clone</b>	rEGP40/4547
<b>Immunogen</b>	Recombinant full-length human EpCAM protein
<b>Host</b>	Mouse
<b>Clonality</b>	Monoclonal
<b>Isotype / Light Chain</b>	IgG2a / Kappa
<b>Mol. Weight of Antigen</b>	34.93kDa
<b>Cellular Localization</b>	Cell junction, Lateral cell membrane, Tight junction
<b>Species Reactivity</b>	Human
<b>Positive Control</b>	HT29 cells. Human breast tumor. HCT116, HEK293.

*\*Optimal dilution for a specific application should be determined.*

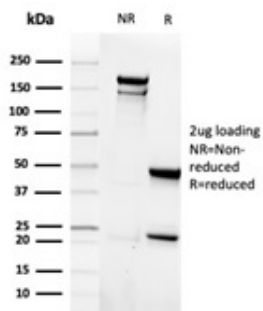
### Product Images for Recombinant EpCAM / CD326 (Epithelial Marker) Antibody



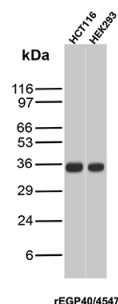
Formalin-fixed, paraffin-embedded human colon carcinoma stained with EpCAM Recombinant Mouse Monoclonal Antibody (rEGP40/4547).



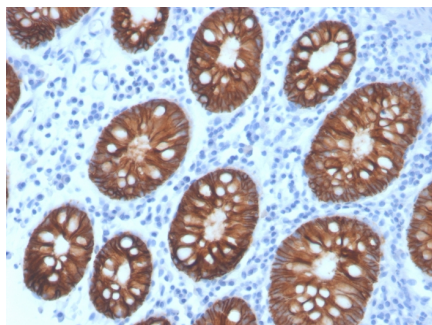
IHC analysis of formalin-fixed, paraffin-embedded human brain. Negative tissue control using rEGP40/4547 at 2ug/ml in PBS for 30min RT. HIER: Tris/EDTA, pH9.0, 45min. 2°C: HRP-polymer, 30min. DAB, 5min.



SDS-PAGE Analysis of Purified EpCAM Recombinant Mouse Monoclonal Antibody (rEGP40/4547). Confirmation of Purity and Integrity of Antibody.



Western blot analysis of HCT116 and HEK293 lysates using EpCAM Mouse Recombinant Monoclonal Antibody (rEGP40/4547).



Formalin-fixed, paraffin-embedded human colon carcinoma stained with EpCAM Recombinant Mouse Monoclonal Antibody (rEGP40/4547).

### Specificity & Comments

Binding epitope of this antibody is located in the first EGF-like repeat domain (EGF1) between amino acids 27-59 of Ep-CAM. EGP40 is a 40-43kDa transmembrane epithelial glycoprotein, also identified as epithelial specific antigen (ESA), or epithelial cellular adhesion molecule (Ep-CAM). It is expressed on baso-lateral cell surface in most simple epithelia and a vast majority of carcinomas with the exception of adult squamous epithelium, hepatocytes and gastric epithelial cells. This antibody has been used to distinguish adenocarcinoma from pleural mesothelioma and hepatocellular carcinoma. This antibody is also useful in distinguishing serous carcinomas of the ovary from mesothelioma.

### Limitations and Warranty

This antibody is available for research use only and is not approved for use in diagnosis. There are no warranties, expressed or implied, which extend beyond this description. Company is not liable for any personal injury or economic loss resulting from this product.

### Supplied As

200ug/ml of Ab produced in a mammalian-based expression system. Prepared in 10mM PBS with 0.05% BSA & 0.05% azide. Also available WITHOUT BSA & azide at 1.0mg/ml.

### Storage and Stability

Antibody with azide - store at 2 to 8 °C. Antibody without azide - store at -20 to -80 °C. Antibody is stable for 24 months. Non-hazardous. No MSDS required.