

Recombinant EpCAM / CD326 (Epithelial Marker) Antibody

Mouse Monoclonal Antibody [Clone rMOC-31]

Catalog No	Format	Size
4072-MSM19-P0	Purified Ab with BSA and Azide at 200ug/ml	20 ug
4072-MSM19-P1	Purified Ab with BSA and Azide at 200ug/ml	100 ug
4072-MSM19-P1ABX	Purified Ab WITHOUT BSA and Azide at 1.0mg/ml	100 ug

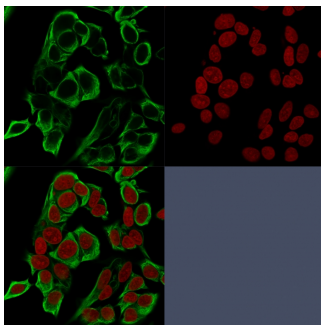
Applications	Tested Dillution	Note
Flow Cytometry (Flow)	1-2ug/million cells	
Immunofluorescence (IF)	1-3ug/ml	
Immunohistochemistry (IHC)	1-2ug/ml	30 min at RT. Staining of formalin-fixed tissues requires heating tissue sections in 10mM Tris with 1mM EDTA, pH 9.0, for 45 min at 95°C followed by cooling at RT for 20 minutes
Western Blot (WB)	2-4ug/ml	

Product Details

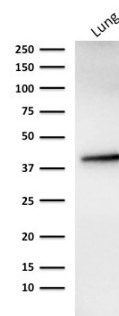
Clone	rMOC-31
Gene Name	EPCAM
Immunogen	Recombinant full-length human EpCAM protein
Host	Mouse
Clonality	Monoclonal
Isotype / Light Chain	IgG1 / Kappa
Mol. Weight of Antigen	40-43kDa
Cellular Localization	Cell junction, Lateral cell membrane, Tight junction
Species Reactivity	Human
Positive Control	MCF-7 or HT29 cells. Human breast tumor. HEK293 or HCT116

*Optimal dilution for a specific application should be determined.

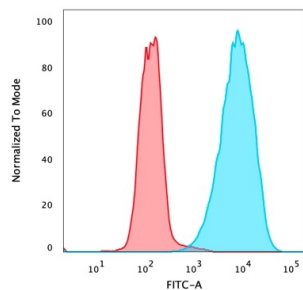
Product Images for Recombinant EpCAM / CD326 (Epithelial Marker) Antibody



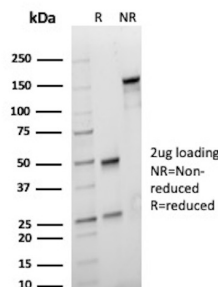
Confocal immunofluorescence analysis of MeOH-fixed MCF-7 cells using EpCAM Mouse Recombinant Monoclonal Antibody (rMOC-31) labeled in green. RedDot is used to stain the nuclei red.



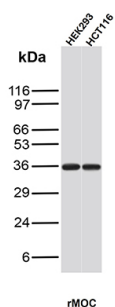
Western blot analysis of human lung tissue lysate using EpCAM Mouse Recombinant Monoclonal Antibody (rMOC-31).



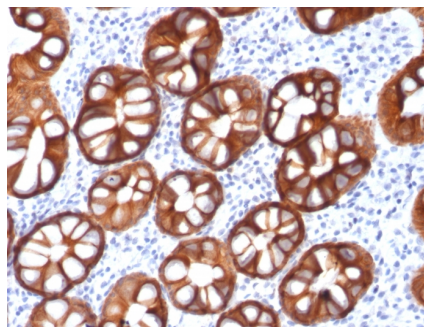
Flow cytometric analysis of PFA-fixed MCF-7 cells stained with EpCAM Mouse Recombinant Monoclonal Antibody (rMOC-31) followed by goat anti-mouse IgG-CF488 (blue); isotype control (red).



SDS-PAGE Analysis of Purified Epithelial cell adhesion molecule Recombinant Mouse Monoclonal Antibody (rMOC-31). Confirmation of Purity and Integrity of Antibody.



Western blot analysis of HEK293 and HCT116 Cell lysates using EpCAM Mouse Recombinant Monoclonal Antibody (rMOC-31).



Formalin-fixed, paraffin-embedded human colon carcinoma stained with EpCAM Mouse Recombinant Monoclonal Antibody (rMOC-31).

Specificity & Comments

Binding epitope of this antibody is located in the first EGF-like repeat domain (EGF1) between amino acids 27-59 of EpCAM. EGP40 is a 40-43kDa transmembrane epithelial glycoprotein, also identified as epithelial specific antigen (ESA), or epithelial cellular adhesion molecule (EpCAM). It is expressed on baso-lateral cell surface in most simple epithelia and a vast majority of carcinomas with the exception of adult squamous epithelium, hepatocytes and gastric epithelial cells. This antibody has been used to distinguish adenocarcinoma from pleural mesothelioma and hepatocellular carcinoma. This antibody is also useful in distinguishing serous carcinomas of the ovary from mesothelioma.

Limitations and Warranty

This antibody is available for research use only and is not approved for use in diagnosis. There are no warranties, expressed or implied, which extend beyond this description. Company is not liable for any personal injury or economic loss resulting from this product.

Supplied As

200ug/ml of Ab produced in CHO cell mammalian-based expression system. Prepared in 10mM PBS with 0.05% BSA & 0.05% azide. Also available WITHOUT BSA & azide at 1.0mg/ml.

Storage and Stability

Antibody with azide - store at 2 to 8 °C. Antibody without azide - store at -20 to -80 °C. Antibody is stable for 24 months. Non-hazardous. No MSDS required.

Research Areas

Stem Cell Differentiation