

Ep-CAM / CD326 (Extracellular Domain) (Epithelial Marker) Antibody

Mouse Monoclonal Antibody [Clone EGP40/1384]

| Catalog No | Format | Size |
|------------------|---|--------|
| 4072-MSM14-P0 | Purified Ab with BSA and Azide at 200ug/ml | 20 ug |
| 4072-MSM14-P1 | Purified Ab with BSA and Azide at 200ug/ml | 100 ug |
| 4072-MSM14-P1ABX | Purified Ab WITHOUT BSA and Azide at 1.0mg/ml | 100 ug |

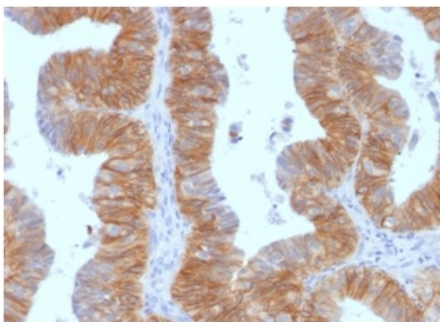
| Applications | Tested Dillution | Note |
|----------------------------|------------------|---|
| Immunofluorescence (IF) | 1-3ug/ml | |
| Immunohistochemistry (IHC) | 1-2ug/ml | 30 min at RT. Staining of formalin-fixed tissues requires heating tissue sections in 10mM Tris with 1mM EDTA, pH 9.0, for 45 min at 95°C followed by cooling at RT for 20 minutes |
| Western Blot (WB) | 2-4ug/ml | |

Product Details

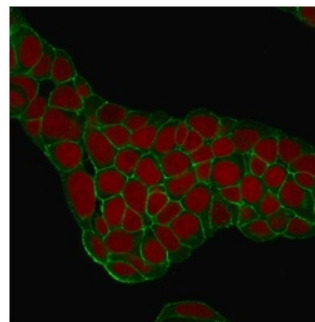
| | |
|-------------------------------|--|
| Clone | EGP40/1384 |
| Gene Name | EPCAM |
| Immunogen | Recombinant fragment from the extracellular domain of human EpCAM protein (around aa100-224) (exact sequence is proprietary) |
| Host | Mouse |
| Clonality | Monoclonal |
| Isotype / Light Chain | IgG / Kappa |
| Mol. Weight of Antigen | 40-43kDa |
| Cellular Localization | Cell junction, Lateral cell membrane, Tight junction |
| Species Reactivity | Cat, Dog, Guinea Pig, Human |
| Positive Control | MCF-7 or HT29 cells. Human lung or ovariancarcinoma (IHC). Human Intestine, Guinea pig Lung or Guinea pig Intestine |

*Optimal dilution for a specific application should be determined.

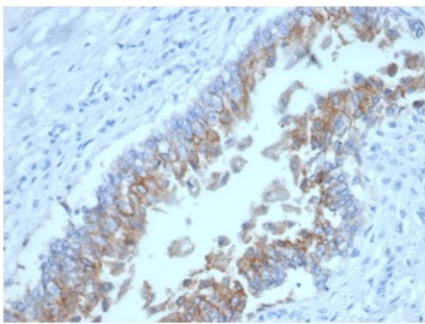
Product Images for Ep-CAM / CD326 (Extracellular Domain) (Epithelial Marker) Antibody



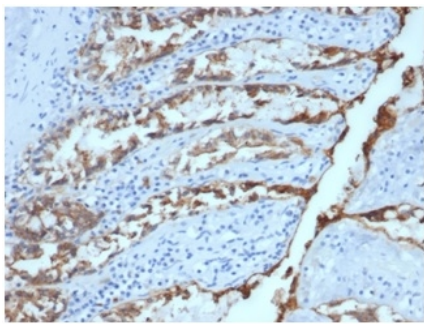
Formalin-fixed, paraffin-embedded human ovarian carcinomastained with EpCAM Mouse Monoclonal Antibody (EGP40/1384).



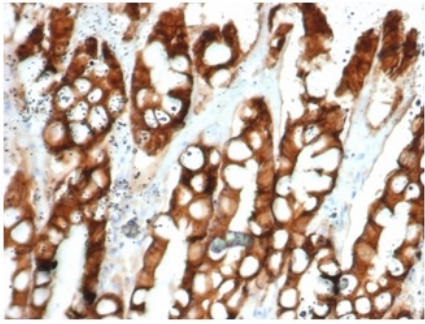
Confocal immunofluorescence analysis of MCF-7 cells. Ep-CAM Mouse Monoclonal Antibody (EGP40/1384) conjugated to CF488 (green). RedDot is used to label the nuclei.



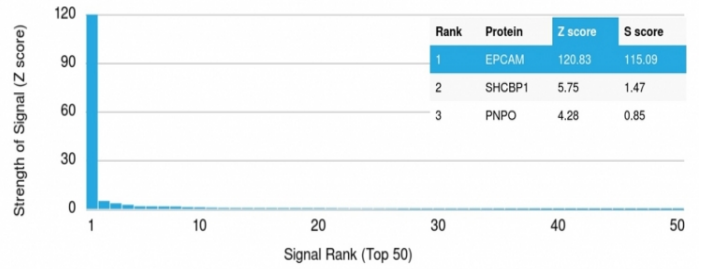
Formalin-fixed, paraffin-embedded canine (dog) bladder stained with Ep-CAM Mouse Monoclonal Antibody (EGP40/1384).



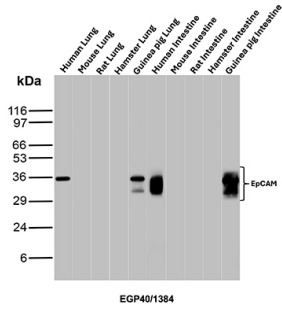
Formalin-fixed, paraffin-embedded canine (dog) colon stained with Ep-CAM Mouse Monoclonal Antibody (EGP40/1384).



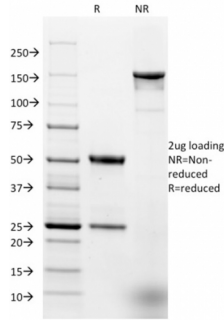
Formalin-fixed, paraffin-embedded feline (cat) small intestine stained with Ep-CAM Mouse Monoclonal Antibody (EGP40/1384).



Analysis of Protein Array containing >19,000 full-length human proteins using EpCAM Mouse Monoclonal Antibody (EGP40/1384) Z- and S- Score: The Z-score represents the strength of a signal that a monoclonal antibody (MAb) (in combination with a fluorescently-tagged anti-IgG secondary antibody) produces when binding to a particular protein on the HuProt™ array. Z-scores are described in units of standard deviations (SD's) above the mean value of all signals generated on that array. If targets on HuProt™ are arranged in descending order of the Z-score, the S-score is the difference (also in units of SD's) between the Z-score. S-score therefore represents the relative target specificity of a MAb to its intended target. A MAb is considered to specific to its intended target, if the MAb has an S-score of at least 2.5. For example, if a MAb binds to protein X with a Z-score of 43 and to protein Y with a Z-score of 14, then the S-score for the binding of that MAb to protein X is equal to 29.



Western blot analysis of Human Lung, Mouse Lung, Rat Lung, Hamster Lung, Guinea pig Lung, Human Intestine, Mouse Intestine, Rat Intestine, Hamster Intestine and Guinea pig Intestine tissue lysates using EpCAM Mouse Monoclonal Antibody (EGP40/1384).



SDS-PAGE Analysis Purified EpCAM Mouse Monoclonal Antibody (EGP40/1384). Confirmation of Integrity and Purity of Antibody.

Specificity & Comments

EGP40 is a 40-43kDa transmembrane epithelial glycoprotein, also identified as epithelial specific antigen (ESA), or epithelial cellular adhesion molecule (Ep-CAM). It is expressed on baso-lateral cell surface in most simple epithelia and a vast majority of carcinomas. This antibody has been used to distinguish adenocarcinoma from pleural mesothelioma and hepatocellular carcinoma. This antibody is also useful in distinguishing serous carcinomas of the ovary from mesothelioma.

Limitations and Warranty

This antibody is available for research use only and is not approved for use in diagnosis. There are no warranties, expressed or implied, which extend beyond this description. Company is not liable for any personal injury or economic loss resulting from this product.

Supplied As

200ug/ml of Ab purified from Bioreactor Concentrate by Protein A/G. Prepared in 10mM PBS with 0.05% BSA & 0.05% azide. Also available WITHOUT BSA & azide at 1.0mg/ml.

Storage and Stability

Antibody with azide - store at 2 to 8 °C. Antibody without azide - store at -20 to -80 °C. Antibody is stable for 24 months. Non-hazardous. No MSDS required.

Research Areas

Stem Cell Differentiation
