

## Lactotransferrin / Lactoferrin / LTF Antibody

Mouse Monoclonal Antibody [Clone LTF/4075]

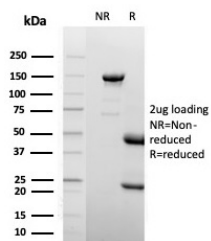
Catalog No	Format	Size
4057-MSM5-P0	Purified Ab with BSA and Azide	200ug/ml
4057-MSM5-P1	Purified Ab with BSA and Azide	200ug/ml
4057-MSM5-P1ABX	Purified Ab WITHOUT BSA and Azide	1.0mg/ml

Applications	Tested Dillution
Immunohistochemistry (IHC)	1-2ug/ml

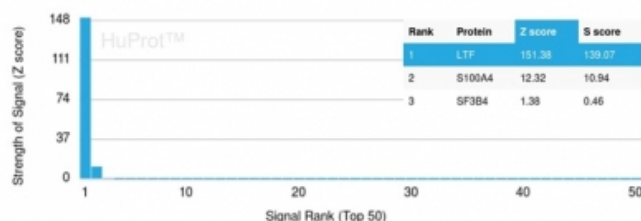
Product Details	
Clone	LTF/4075
Gene Name	LTF
Immunogen	Recombinant fragment (around aa614-645) of human Lactotransferrin protein (exact sequence is proprietary)
Host	Mouse
Clonality	Monoclonal
Isotype / Light Chain	IgG2b / Kappa
Mol. Weight of Antigen	78kDa
Cellular Localization	Cytoplasm, Cytoplasmic granule, Nucleus, Secreted
Species Reactivity	Human
Positive Control	Human lactating breast or prostate tissue.

*\*Optimal dilution for a specific application should be determined.*

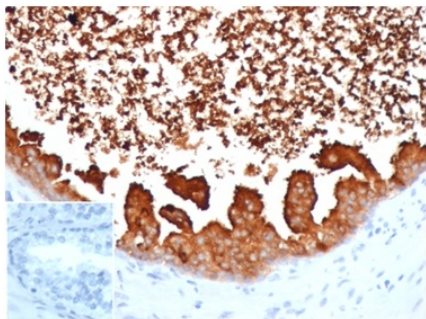
### Product Images for Lactotransferrin / Lactoferrin / LTF Antibody



SDS-PAGE Analysis Purified Lactotransferrin Mouse Monoclonal Antibody (LTF/4075). Confirmation of Integrity and Purity of Antibody.



SDS-PAGE Analysis of Purified Lactotransferrin Mouse Monoclonal Antibody (LTF/4075). Confirmation of Integrity and Purity of Antibody.



Formalin-fixed, paraffin-embedded human prostate carcinoma stained with Lactotransferrin Mouse Monoclonal Antibody (LTF/4075). Inset: PBS instead of primary, secondary negative control.

### Specificity & Comments

Ferritin and transferrins manage necessary iron-binding functions for iron metabolism. Transferrins comprise a class of single-chain, two-sided, metal-binding proteins expressed throughout the fluid and cells of vertebrates. The three major types of transferrin include serotransferrin, lactotransferrin (lactoferrin) and ovotransferrin. Lactoferrin is found in milk, tears and leukocytes. It degrades an IgA1 protease secreted by *Haemophilus influenzae* and, consequently, allows the human IgA1 antibody to effectively abolish *Haemophilus influenzae* colonization. Lactoferrin also attenuates the pathogenic potential of *Haemophilus influenzae* by proteolytic degradation of the Hap adhesin. While lactoferrin may aid in the transmission of human T cell leukemia virus type 1, it inhibits HIV-1 replication at the level of viral fusion and entry into cells. The inhibitory effects of lactoferrin on mixed lymphocyte reactions suggest that it may have the ability to sense the activation status of lymphocytes.

### Research Areas

Immunology, Infectious Disease

### Known Applications & Suggested Dilutions

Immunohistochemistry (Formalin-fixed) (1-2 µg/ml for 30 minutes at RT), (Staining of formalin-fixed tissues requires heating tissue sections in 10mM Tris with 1mM EDTA, pH 9.0, for 45 min at 95 °C followed by cooling at RT for 20 minutes), Optimal dilution for a specific application should be determined.

### Limitations and Warranty

This antibody is available for research use only and is not approved for use in diagnosis.

There are no warranties, expressed or implied, which extend beyond this description. Company is not liable for any personal injury or economic loss resulting from this product.

### Supplied As

200 µg/ml of Ab purified from Bioreactor Concentrate by Protein A/G. Prepared in 10mM PBS with 0.05% BSA & 0.05% azide. Also available WITHOUT BSA & azide at 1.0 mg/ml.

### Storage and Stability

Antibody with azide - store at 2 to 8 °C. Antibody without azide - store at -20 to -80 °C. Antibody is stable for 24 months. Non-hazardous. No MSDS required.