

Recombinant Laminin Receptor/ RPSA (Marker of Metastatic Potential) Antibody

Rabbit Monoclonal Antibody [Clone RPSA/6332R]

Catalog No	Format	Size
3921-RBM2-P0	Purified Ab with BSA and Azide at 200ug/ml	20 ug
3921-RBM2-P1	Purified Ab with BSA and Azide at 200ug/ml	100 ug
3921-RBM2-P1ABX	Purified Ab WITHOUT BSA and Azide at 1.0mg/ml	100 ug

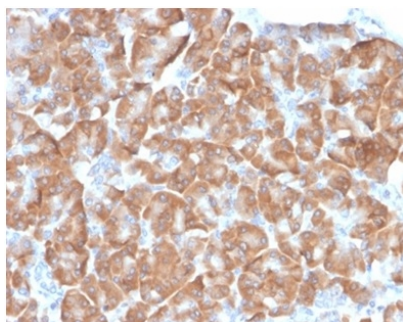
Applications	Tested Dillution	Note
Immunohistochemistry (IHC)	1-2ug/ml	30 min at RT. Staining of formalin-fixed tissues requires heating tissue sections in 10mM Tris with 1mM EDTA, pH 9.0, for 45 min at 95°C followed by cooling at RT for 20 minutes
Western Blot (WB)	2-4ug/ml	

Product Details

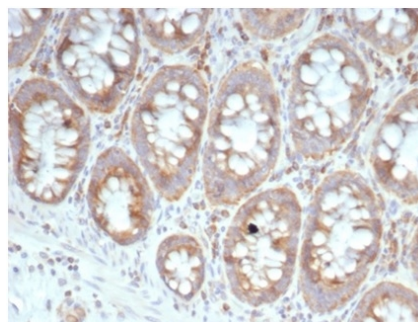
Clone	RPSA/6332R
Gene Name	RPSA
Immunogen	Recombinant full-length human RPSA protein
Host	Rabbit
Clonality	Monoclonal
Isotype / Light Chain	IgG / Kappa
Mol. Weight of Antigen	37-67kDa
Cellular Localization	Cell membrane, Cytoplasm, Nucleus
Species Reactivity	Human
Positive Control	colon or ovarian carcinoma., Human breast, Human Pancreas, Human Skin, Human Spleen, Human Stomach, HeLa and 3T3.

*Optimal dilution for a specific application should be determined.

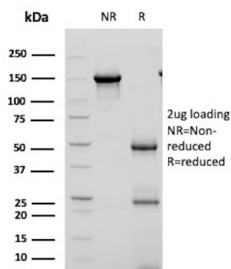
Product Images for Recombinant Laminin Receptor/ RPSA (Marker of Metastatic Potential) Antibody



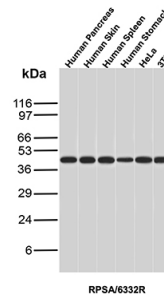
Formalin-fixed, paraffin-embedded human pancreas stained with Laminin Receptor Recombinant Rabbit Monoclonal (RPSA/6332R). HIER: Tris/EDTA, pH9.0, 45min. 2°C: HRP-polymer, 30min. DAB, 5min.



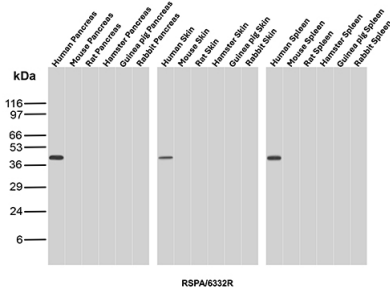
Formalin-fixed, paraffin-embedded human colon stained with Laminin Receptor Recombinant Rabbit Monoclonal (RPSA/6332R). HIER: Tris/EDTA, pH9.0, 45min. 2 °: HRP-polymer, 30min. DAB, 5min.



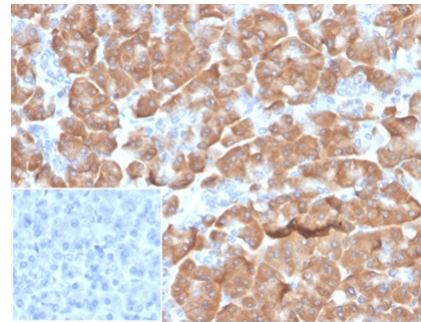
SDS-PAGE Analysis of Purified RPSA Recombinant Rabbit Monoclonal Antibody (RPSA/6332R). Confirmation of Purity and Integrity of Antibody



Western Blot Analysis of Human Pancreas, Human Skin, Human Spleen, Human Stomach, HeLa and 3T3 lysates using Laminin Receptor Recombinant Rabbit Monoclonal Antibody (RPSA/6332R).



Western Blot Analysis of Pancreas, Skin and Spleen tissue lysates of different species using Laminin Receptor Recombinant Rabbit Monoclonal Antibody (RPSA/6332R).



Formalin-fixed, paraffin-embedded human pancreas stained with Laminin Receptor Recombinant Rabbit Monoclonal (RPSA/6332R). Inset: PBS instead of primary antibody; secondary only negative control.

Specificity & Comments

Laminins, a family of extracellular matrix glycoproteins, are the major non-collagenous constituent of basement membranes. They have been implicated in a wide variety of biological processes including cell adhesion, differentiation, migration, signaling, neurite outgrowth and metastasis. Many of the effects of laminin are mediated through interactions with cell surface receptors. These receptors include members of the integrin family, as well as non-integrin laminin-binding proteins. This gene encodes a high-affinity, non-integrin family, laminin receptor 1. Reportedly, level of laminin receptor transcript is higher in colon carcinoma tissue and lung cancer cell line than their normal counterparts. Also, there is a correlation between the upregulation of this polypeptide in cancer cells and their invasive and metastatic phenotype.

Limitations and Warranty

This antibody is available for research use only and is not approved for use in diagnosis. There are no warranties, expressed or implied, which extend beyond this description. Company is not liable for any personal injury or economic loss resulting from this product.

Supplied As

200ug/ml of Ab purified from Bioreactor Concentrate by Protein A/G. Prepared in 10mM PBS with 0.05% BSA & 0.05% azide. Also available WITHOUT BSA & azide at 1mg/ml.

Storage and Stability

Antibody with azide - store at 2 to 8 °C. Antibody without azide - store at -20 to -80 °C. Antibody is stable for 24 months. Non-hazardous. No MSDS required.

Research Areas

Developmental Biology, Infectious Disease