

## Recombinant Laminin Receptor/ RPSA (Marker of Metastatic Potential) Antibody

Mouse Monoclonal Antibody [Clone rRPSA/6333]

Catalog No	Format	Size
3921-MSM3-P0	Purified Ab with BSA and Azide at 200ug/ml	20 ug
3921-MSM3-P1	Purified Ab with BSA and Azide at 200ug/ml	100 ug
3921-MSM3-P1ABX	Purified Ab WITHOUT BSA and Azide at 1.0mg/ml	100 ug

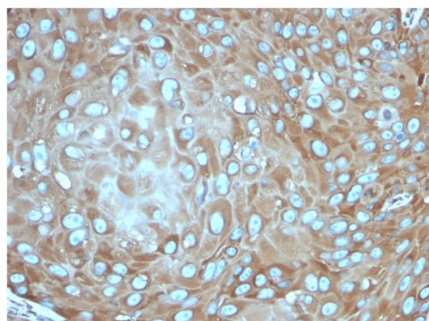
Applications	Tested Dillution	Note
Immunohistochemistry (IHC)	1-2ug/ml	30 min at RT. Staining of formalin-fixed tissues requires heating tissue sections in 10mM Tris with 1mM EDTA, pH 9.0, for 45 min at 95°C followed by cooling at RT for 20 minutes

### Product Details

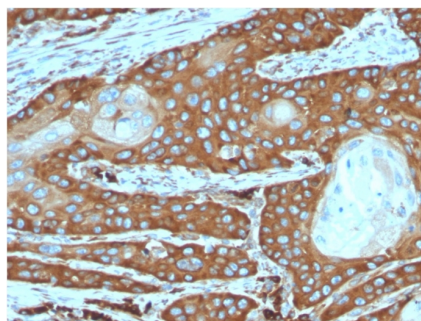
<b>Clone</b>	rRPSA/6333
<b>Gene Name</b>	RPSA
<b>Immunogen</b>	Recombinant full-length human RPSA protein
<b>Host</b>	Mouse
<b>Clonality</b>	Monoclonal
<b>Isotype / Light Chain</b>	IgG1 / Kappa
<b>Mol. Weight of Antigen</b>	37-67kDa
<b>Cellular Localization</b>	Cell membrane, Cytoplasm, Nucleus
<b>Species Reactivity</b>	Human
<b>Positive Control</b>	colon or ovarian carcinoma., MCF-7, MDA-MB-453or HEK293 cells.Human breast

*\*Optimal dilution for a specific application should be determined.*

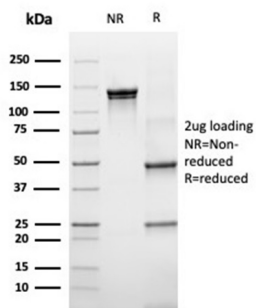
### Product Images for Recombinant Laminin Receptor/ RPSA (Marker of Metastatic Potential) Antibody



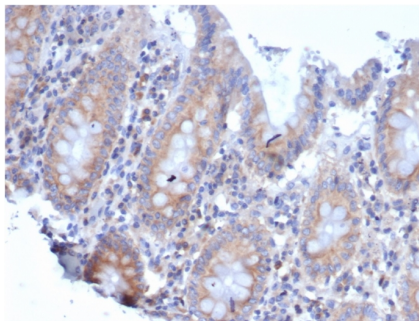
Formalin-fixed, paraffin-embedded human skin squamous cell carcinoma stained with Laminin Receptor Recombinant Mouse Monoclonal Antibody (rRPSA/6333).



Formalin-fixed, paraffin-embedded human cervical carcinoma stained with Laminin Receptor Recombinant Mouse Monoclonal Antibody (rRPSA/6333).



SDS-PAGE Analysis of Purified RPSA Recombinant Mouse Monoclonal Antibody (rRPSA/6333). Confirmation of Purity and Integrity of Antibody.



Formalin-fixed, paraffin-embedded human colon stained with Laminin Receptor Recombinant Mouse Monoclonal Antibody (rRPSA/6333).

### Specificity & Comments

Laminins, a family of extracellular matrix glycoproteins, are the major non-collagenous constituent of basement membranes. They have been implicated in a wide variety of biological processes including cell adhesion, differentiation, migration, signaling, neurite outgrowth and metastasis. Many of the effects of laminin are mediated through interactions with cell surface receptors. These receptors include members of the integrin family, as well as non-integrin laminin-binding proteins. This gene encodes a high-affinity, non-integrin family, laminin receptor 1. Reportedly, level of laminin receptor transcript is higher in colon carcinoma tissue and lung cancer cell line than their normal counterparts. Also, there is a correlation between the upregulation of this polypeptide in cancer cells and their invasive and metastatic phenotype.

### Limitations and Warranty

This antibody is available for research use only and is not approved for use in diagnosis. There are no warranties, expressed or implied, which extend beyond this description. Company is not liable for any personal injury or economic loss resulting from this product.

### Supplied As

200ug/ml of Ab purified from Bioreactor Concentrate by Protein A/G. Prepared in 10mM PBS with 0.05% BSA & 0.05% azide. Also available WITHOUT BSA & azide at 1mg/ml.

### Storage and Stability

Antibody with azide - store at 2 to 8 °C. Antibody without azide - store at -20 to -80 °C. Antibody is stable for 24 months. Non-hazardous. No MSDS required.

### Research Areas

Developmental Biology, Infectious Disease