

Laminin Receptor / RPSA (Marker of Metastatic Potential) Antibody

Mouse Monoclonal Antibody [Clone RPSA/2699]

Catalog No	Format	Size
3921-MSM1-P0	Purified Ab with BSA and Azide at 200ug/ml	20 ug
3921-MSM1-P1	Purified Ab with BSA and Azide at 200ug/ml	100 ug
3921-MSM1-P1ABX	Purified Ab WITHOUT BSA and Azide at 1.0mg/ml	100 ug

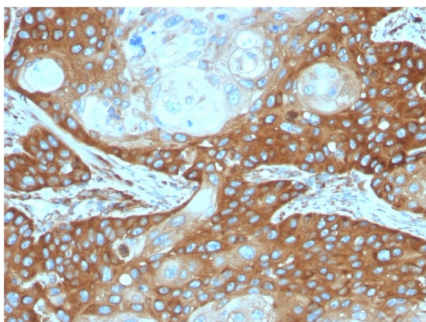
Applications	Tested Dillution	Note
Flow Cytometry (Flow)	1-2ug/million cells	
Immunofluorescence (IF)	1-3ug/ml	
Immunohistochemistry (IHC)	1-2ug/ml	30 min at RT. Staining of formalin-fixed tissues requires heating tissue sections in 10mM Tris with 1mM EDTA, pH 9.0, for 45 min at 95°C followed by cooling at RT for 20 minutes
Western Blot (WB)	2-4ug/ml	

Product Details

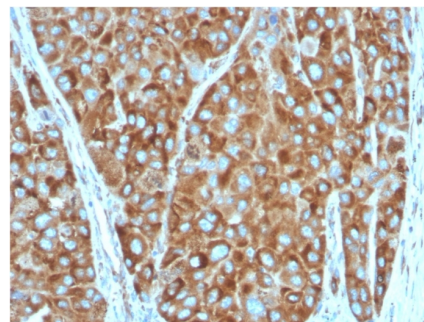
Clone	RPSA/2699
Gene Name	RPSA
Immunogen	Recombinant full-length human RPSA protein
Host	Mouse
Clonality	Monoclonal
Isotype / Light Chain	IgG1 / Kappa
Mol. Weight of Antigen	37-67kDa
Cellular Localization	Cell membrane, Cytoplasm, Nucleus
Species Reactivity	Human
Positive Control	Human breast, colon or ovarian carcinoma. MCF-7, MDA-MB-453 or HEK293 cells.

*Optimal dilution for a specific application should be determined.

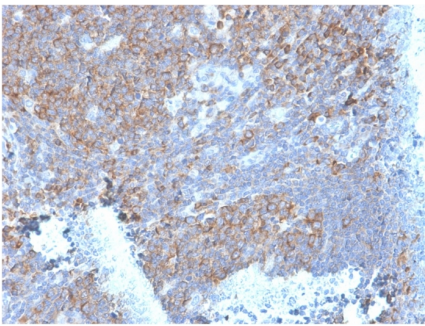
Product Images for Laminin Receptor / RPSA (Marker of Metastatic Potential) Antibody



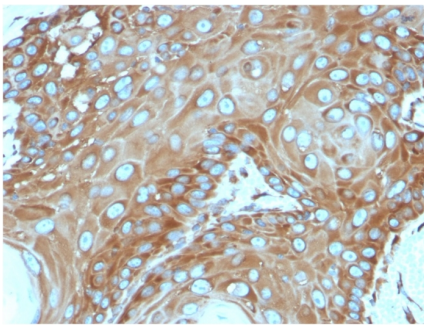
Formalin-fixed, paraffin-embedded human cervical carcinoma stained with Laminin Receptor Mouse Monoclonal Antibody (RPSA/2699).



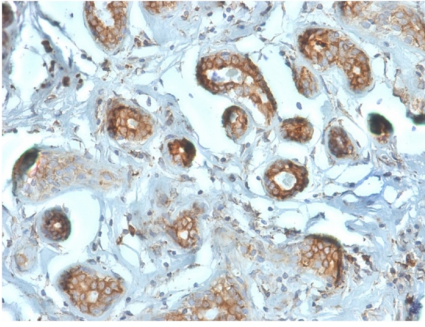
Formalin-fixed, paraffin-embedded human colon carcinoma stained with Laminin Receptor Monospecific Mouse Monoclonal Antibody (RPSA/2699).



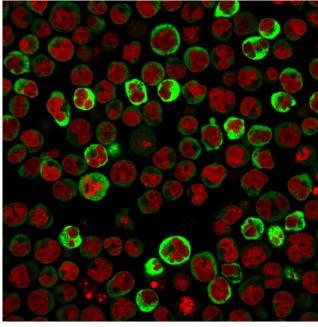
Formalin-fixed, paraffin-embedded human tonsil stained with Laminin Receptor Mouse Monoclonal Antibody (RPSA/2699).



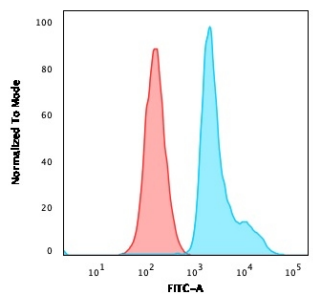
Formalin-fixed, paraffin-embedded human basal cell carcinoma stained with Laminin Receptor Mouse Monoclonal Antibody (RPSA/2699).



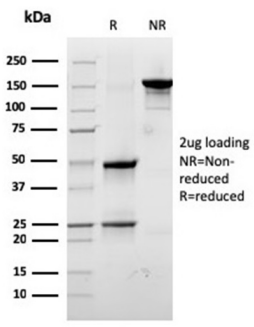
Formalin-fixed, paraffin-embedded human breast carcinoma stained with Laminin Receptor Monospecific Mouse Monoclonal Antibody (RPSA/2699).



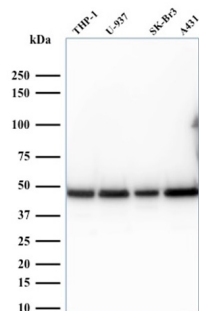
Immunofluorescent staining of PFA-fixed Raji cells using Laminin Receptor Mouse Monoclonal Antibody (RPSA/2699) followed by goat anti-mouse IgG-CF488 (green). Nuclei are labeled with RedDot (red).



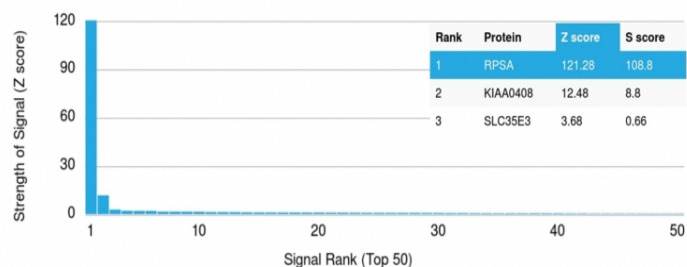
Flow Cytometric Analysis of PFA-fixed Raji cells. Laminin Receptor Monospecific Mouse Monoclonal Antibody (RPSA/2699) followed by goat anti-mouse IgG-CF488 (blue); isotype control (red).



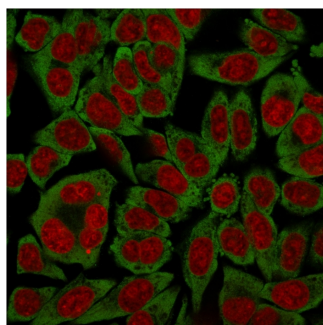
SDS-PAGE Analysis of Purified Laminin Receptor Mouse Monoclonal Antibody (RPSA/2699). Confirmation of Integrity and Purity of Antibody.



Western blot analysis of human THP-1, U937, SK-BR3 and A431 cell lysates. Laminin Receptor Mouse Monoclonal Antibody (RPSA/2699).



Analysis of Protein Array containing more than 19,000 full-length human proteins using Laminin Receptor Monospecific Mouse Monoclonal Antibody (RPSA/2699). Z- and S-Score: The Z-score represents the strength of a signal that a monoclonal antibody (MAb) (in combination with a fluorescently-tagged anti-IgG secondary antibody) produces when binding to a particular protein on the HuProt™ array. Z-scores are described in units of standard deviations (SD's) above the mean value of all signals generated on that array. If targets on HuProt™ are arranged in descending order of the Z-score, the S-score is the difference (also in units of SD's) between the Z-score. S-score therefore represents the relative target specificity of a MAb to its intended target. A MAb is considered to be specific to its intended target, if the MAb has an S-score of at least 2.5. For example, if a MAb binds to protein X with a Z-score of 43 and to protein Y with a Z-score of 14, then the S-score for the binding of that MAb to protein X is equal to 29.



Immunofluorescent staining of HeLa cells using Laminin Receptor Mouse Monoclonal Antibody (RPSA/2699) followed by goat anti-mouse IgG-CF488 (green). Nuclei are labeled with RedDot (red).

Specificity & Comments

Laminins, a family of extracellular matrix glycoproteins, are the major non-collagenous constituent of basement membranes. They have been implicated in a wide variety of biological processes including cell adhesion, differentiation, migration, signaling, neurite outgrowth and metastasis. Many of the effects of laminin are mediated through interactions with cell surface receptors. These receptors include members of the integrin family, as well as non-integrin laminin-binding proteins. This gene encodes a high-affinity, non-integrin family, laminin receptor 1. Reportedly, level of laminin receptor transcript is higher in colon carcinoma tissue and lung cancer cell line than their normal counterparts. Also, there is a correlation between the upregulation of this polypeptide in cancer cells and their invasive and metastatic phenotype.

Limitations and Warranty

This antibody is available for research use only and is not approved for use in diagnosis. There are no warranties, expressed or implied, which extend beyond this description. Company is not liable for any personal injury or economic loss resulting from this product.

Supplied As

200ug/ml of Ab purified from Bioreactor Concentrate by Protein A/G. Prepared in 10mM PBS with 0.05% BSA & 0.05% azide. Also available WITHOUT BSA & azide at 1mg/ml.

Storage and Stability

Antibody with azide - store at 2 to 8 °C. Antibody without azide - store at -20 to -80 °C. Antibody is stable for 24 months. Non-hazardous. No MSDS required.

Research Areas

Developmental Biology, Infectious Disease