

## Laminin, gamma 1 (LAMC1) Antibody

Rat Monoclonal Antibody [Clone SPM193]

Catalog No	Format	Size
3915-RTM1X-P0	Purified Ab with BSA and Azide at 200ug/ml	20 ug
3915-RTM1X-P1	Purified Ab with BSA and Azide at 200ug/ml	100 ug
3915-RTM1X-P1ABX	Purified Ab WITHOUT BSA at 1.0mg/ml	100 ug

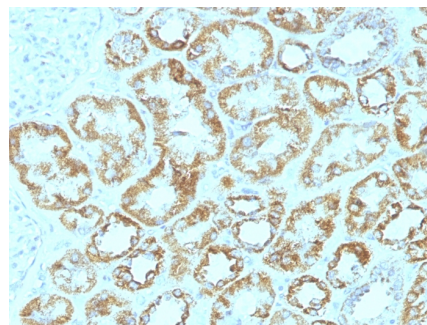
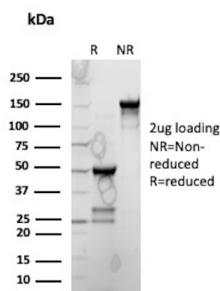
Applications	Tested Dillution	Note
Flow Cytometry (Flow)	1-2ug/million cells	
Immunofluorescence (IF)	1-3ug/ml	
Immunohistochemistry (IHC)	1-2ug/ml	30 min at RT. Staining of formalin-fixed tissues requires heating tissue sections in 10mM Tris with 1mM EDTA, pH 9.0, for 45 min at 95°C followed by cooling at RT for 20 minutes

### Product Details

Clone	SPM193
Gene Name	LAMC1
Immunogen	Murine EHS laminin preparation
Host	Rat
Clonality	Monoclonal
Isotype / Light Chain	IgG2a / Kappa
Mol. Weight of Antigen	210kDa
Cellular Localization	Basement membrane, Extracellular matrix, Extracellular space, Secreted
Species Reactivity	Human, Mouse
Positive Control	Normal colon or carcinomas.

*\*Optimal dilution for a specific application should be determined.*

### Product Images for Laminin, gamma 1 (LAMC1) Antibody



SDS-PAGE Analysis of Purified Laminin Mouse Monoclonal Antibody (SPM193). Confirmation of Purity and Integrity of Antibody

Formalin-fixed, paraffin-embedded human Renal Cell Carcinoma stained with Laminin Monoclonal Antibody (SPM193).

## Specificity & Comments

---

## Supplied As

200ug/ml of Ab Purified from Bioreactor Concentrate by Protein A/G. Prepared in 10mM PBS with 0.05% BSA & 0.05% azide. Also available WITHOUT BSA at 1.0mg/ml.

---

## Storage and Stability

Antibody with azide - store at 2 to 8°C. Antibody without azide - store at -20 to -80°C. Antibody is stable for 24 months. Non-hazardous. No MSDS required.

---

## Research Areas

Autophagy, Cardiovascular, Complement System, Developmental Biology, Lung Cancer, Signal Transduction

---

## Limitations and Warranty

This antibody is available for research use only and is not approved for use in diagnosis. There are no warranties, expressed or implied, which extend beyond this description. Company is not liable for any personal injury or economic loss resulting from this product.

---